

Haldimand East Accommodation Review

September 24, 2015



Achievement

Environment

Engagement

Additional Development – Dunnville

Project/Development	# of dwelling units				Status of Development
	Single Family	Semi Detached	Townhouse	Apartment	
Woodland Estates	23	10			Under construction
Heron Landing	30				Site plan approved, fully serviced ready for construction
Wabasso Phase 3			14	16	Under construction
Alder Street Redevelopment	1	8			Site plan approved. Construction to commence early fall
Meritage Landing Phase 1	12				Under construction
Meritage Landing Phase 2	13				Under construction
Meritage Landing Phase 3		36	40		Site plan submitted and under review
Total Dwellings	79	54	54	16	
Elementary Pupil Yield	16	11	8	2	Total = 37 pupils



Growing Excellence... Inspiring Success

Review of options, capacity, utilization, transportation and other issues



Growing Excellence... Inspiring Success

Haldimand East Elementary

Summary of Enrolment and Capacity

<i>Existing Capacity and School Boundaries</i>							
School	Capacity	Portable Capacity	Capacity of Non-Loaded Use	Total Capacity	Current Enrolment	5 Year Projection	10 Year Projection
Anna Melick	210			210	130	118	120
Fairview Avenue	303		69	372	279	272	270
Grandview Central	199	0		199	142	125	130
JL Mitchener	368		46	414	285	277	263
Rainham Central	274	46		320	244	217	212
Thompson Creek	421		23	444	353	368	365
Total	1775	46	138	1959	1433	1377	1360
Surplus Pupil Spaces (including portables)					526	582	599
Utilization (excluding portables)					74.9%	72.0%	71.1%
Utilization (including portable capacity)					73.1%	70.3%	69.4%



Growing Excellence... Inspiring Success

Haldimand East Elementary

Summary of Enrolment and Capacity

Option 1 - Close Anna Melick							
School	Capacity	Portable Capacity	Capacity of Non-Loaded Use	Total Capacity	Enrolment Shift	5 Year Projection	10 Year Projection
Anna Melick	210			close	-120	0	0
Fairview Avenue	303		69	372	0	272	270
Grandview Central	199	0		199	0	125	130
JL Mitchener	368		46	414	0	277	263
Rainham Central	274	46		320	0	217	212
Thompson Creek	444	46	0	490	120	486	485
Total	1588	92	115	1795	0	1377	1360
Surplus Pupil Spaces (including portables)						418	435
Utilization (excluding portables)						80.9%	79.9%
Utilization (including portable capacity)						76.7%	75.8%

Observations:

- Additional space required at Thompson Creek while surplus space remains elsewhere
- Thompson Creek Nutrition Program displaced
- Additional ride time for students in east end of Anna Melick catchment area, shorter ride time for others.
- Over 400 surplus pupil spaces remain



Growing Excellence... Inspiring Success

Haldimand East Elementary

Summary of Enrolment and Capacity

Option 2 - Close Grandview Central							
School	Capacity	Portable Capacity	Capacity of Non-Loaded Use	Total Capacity	Enrolment Shift	5 Year Projection	10 Year Projection
Anna Melick	210			210	0	0	0
Fairview Avenue	372	46	0	418	130	397	400
Grandview Central	199	0		close	-130	0	0
JL Mitchener	368		46	414	0	277	263
Rainham Central	274	46		320	0	217	212
Thompson Creek	421		23	444	0	486	485
Total	1645	92	69	1806	0	1377	1360
Surplus Pupil Spaces (including portables)						429	446
Utilization (excluding portables)						80.3%	79.4%
Utilization (including portable capacity)						76.2%	75.3%

Observations:

- Additional space required at Fairview Avenue while surplus space remains elsewhere
- Fairview Early Years Program displaced
- Additional 7 minute bus ride (2.7 km) for Grandview students
- Over 400 surplus pupil spaces remain



Growing Excellence... Inspiring Success

Haldimand East Elementary

Summary of Enrolment and Capacity

<i>Option 3 - Close Anna Melick and Grandview Central (full school enrolment re-assigned)</i>							
School	Capacity	Portable Capacity	Capacity of Non-Loaded Use	Total Capacity	Enrolment Shift	5 Year Projection	10 Year Projection
Anna Melick	210			close	-120	0	0
Fairview Avenue	372	46	0	418	130	397	400
Grandview Central	199	0		close	-130	0	0
JL Mitchener	368		46	414	0	277	263
Rainham Central	274	46		320	0	217	212
Thompson Creek	444	46	0	490	120	486	485
Total	1458	138	46	1642	0	1377	1360
Surplus Pupil Spaces (including portables)						265	282
Utilization (excluding portables)						91.6%	90.4%
Utilization (including portable capacity)						83.9%	82.8%

Observations:

- *Additional space required at Fairview Avenue while surplus space remains elsewhere*
- *Fairview Early Years Program displaced*
- *Additional 7 minute bus ride (2.7 km) for Grandview students*
- *Additional space required at Thompson Creek while surplus space remains elsewhere*
- *Thompson Creek Nutrition Program displaced*
- *Additional ride time for students in east end of Anna Melick catchment area, shorter ride time for others.*
- *All students from each closed schools accommodated at a single school.*
- *Over 250 surplus pupil spaces remain*



Growing Excellence... Inspiring Success

Haldimand East Elementary

Summary of Enrolment and Capacity

<i>Option 4 - Close Anna Melick and Grandview Central (Grandview enrolment split between two schools)</i>							
School	Capacity	Portable Capacity	Capacity of Non-Loaded Use	Total Capacity	Enrolment Shift	5 Year Projection	10 Year Projection
Anna Melick	210			close	-120	0	0
Fairview Avenue	372		0	372	60	330	330
Grandview Central	199	0		close	-130	0	0
JL Mitchener	368		46	414	0	277	263
Rainham Central	274	46		320	70	284	282
Thompson Creek	444	46	0	490	120	486	485
Total	1458	92	46	1596	0	1377	1360
Surplus Pupil Spaces (including portables)						219	236
Utilization (excluding portables)						91.6%	90.4%
Utilization (including portable capacity)						86.3%	85.2%

Observations:

- *Fairview Early Years Program displaced*
- *Additional 7 minute bus ride (2.7 km) for Grandview students assigned to Fairview*
- *Additional space required at Thompson Creek while surplus space remains elsewhere*
- *Thompson Creek Nutrition Program displaced*
- *Additional ride time for students in east end of Anna Melick catchment area, shorter ride time for others.*
- *Grandview enrolment split between two schools*
- *Elementary feeder school boundaries no longer align with secondary catchment areas. Rainham students currently feed into Cayuga SS, Grandview feeds in to Dunnville SS. Future Gr 8 graduates from Rainham would be split for grade 9.*
- *Utilization rate over 85% with portables*



Growing Excellence... Inspiring Success

Haldimand East Elementary

Summary of Enrolment and Capacity

<i>Option 5 - Close Anna Melick and Grandview Central (enrolment spread over four schools)</i>							
School	Capacity	Portable Capacity	Capacity of Non-Loaded Use	Total Capacity	Enrolment Shift	5 Year Projection	10 Year Projection
Anna Melick	210			close	-120	0	0
Fairview Avenue	372		0	372	60	330	330
Grandview Central	199	0		close	-130	0	0
JL Mitchener	368		46	414	61	338	324
Rainham Central	274	46		320	70	284	282
Thompson Creek	444	0	0	444	59	425	424
Total	1458	46	46	1550	0	1377	1360
Surplus Pupil Spaces (including portables)						173	190
Utilization (excluding portables)						91.6%	90.4%
Utilization (including portable capacity)						88.8%	87.7%

Observations:

- *Fairview Early Years Program displaced*
- *Thompson Creek Nutrition Program displaced*
- *Additional 7 minute bus ride (2.7 km) for Grandview students assigned to Fairview*
- *Additional ride time for students in east end of Anna Melick catchment area, shorter ride time for others.*
- *Additional ride time for Thompson Creek students assigned to JL Mitchener.*
- *Anna Melick enrolment split between two schools*
- *Grandview enrolment split between two schools*
- *Elementary feeder school boundaries no longer align with secondary catchment areas. Rainham students currently feed into Cayuga SS, Grandview feeds in to Dunnville SS. Future Gr 8 graduates from Rainham would be split for transition to grade 9.*
- *Thompson Creek students currently feed into Dunnville SS. Students assigned to JL Mitchener from the Thompson Creek catchment will be split from the rest of their Gr8 cohort for transition to secondary school*
- *Utilization rate over 85% with portables*



Growing Excellence... Inspiring Success

Haldimand East Elementary

Summary of Enrolment and Capacity

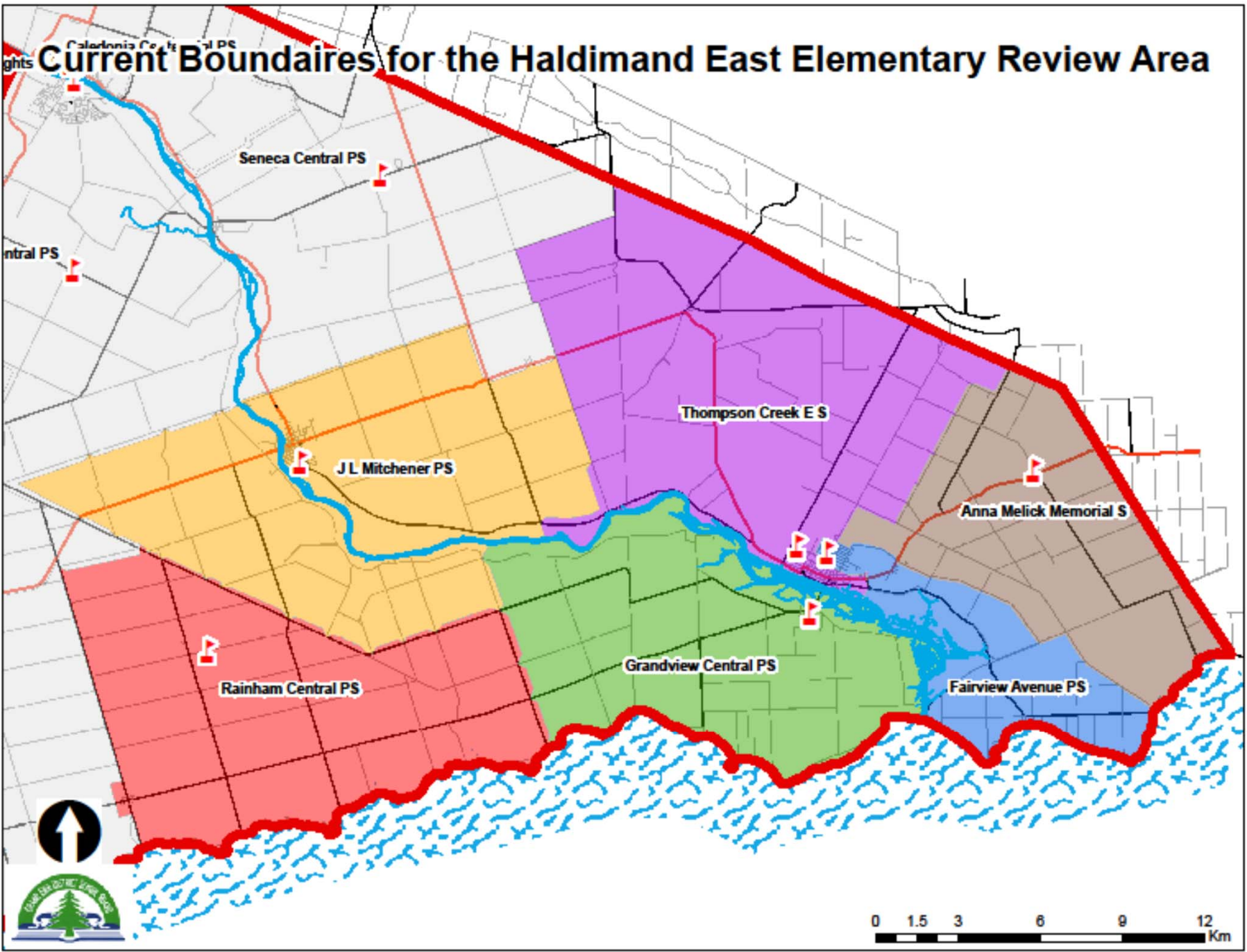
<i>Option 6 - Close Thompson Creek</i>							
School	Capacity	Portable Capacity	Capacity of Non-Loaded Use	Total Capacity	Enrolment Shift	5 Year Projection	10 Year Projection
Anna Melick	210			210	80	198	200
Fairview Avenue	303		69	372	95	367	365
Grandview Central	199	0		199	70	195	200
JL Mitchener	368		46	414	123	400	383
Rainham Central	274	46		320	0	217	212
Thompson Creek	421		23	closed	-368	0	0
Total	1354	46	115	1515	0	1377	1360
Surplus Pupil Spaces (including portables)						138	155
Utilization (excluding portables)						93.7%	92.6%
Utilization (including portable capacity)						90.9%	89.8%

Observations:

- *Students would have to be split across the four closest schools to manage accommodation without an addition or portables*
- *Thompson Creek is the largest facility and site of the group of schools under review.*
- *The Thompson Creek site is a superior elementary school site that is used by other schools for regional track meets.*
- *Thompson Creek students currently feed into Dunnville SS. Students assigned to JL Mitchener from the Thompson Creek catchment will be split from the rest of their Gr8 cohort for transition to secondary school*
- *will require 2 additional buses ; ride times would increase on average but not expected to be greater than 60 minutes for the longest rider.*
- *JL Mitchener bus loading zone is currently at its capacity and would not be able to accommodate 2 additional buses. Bus arrival and departure would have to be staged requiring additional supervision time.*
- *Utilization rate well over 85% with portables*



Growing Excellence... Inspiring Success



Current Boundaires for the Haldimand East Elementary Review Area

Seneca Central PS

Thompson Creek E S

JL Mitchener PS

Anna Melick Memorial S

Rainham Central PS

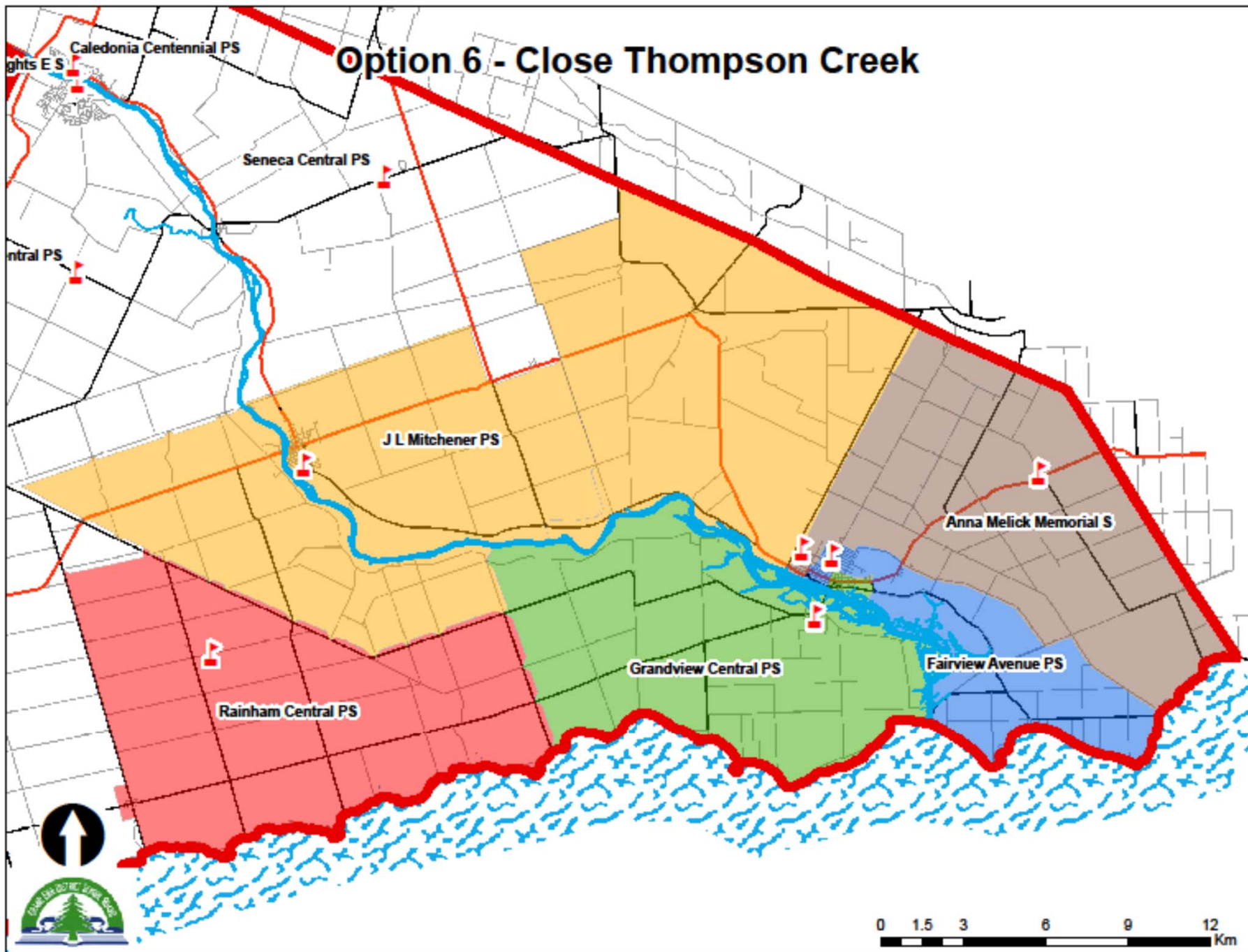
Grandview Central PS

Fairview Avenue PS

0 1.5 3 6 9 12 Km



Option 6 - Close Thompson Creek



Haldimand East Elementary

Summary of Enrolment and Capacity

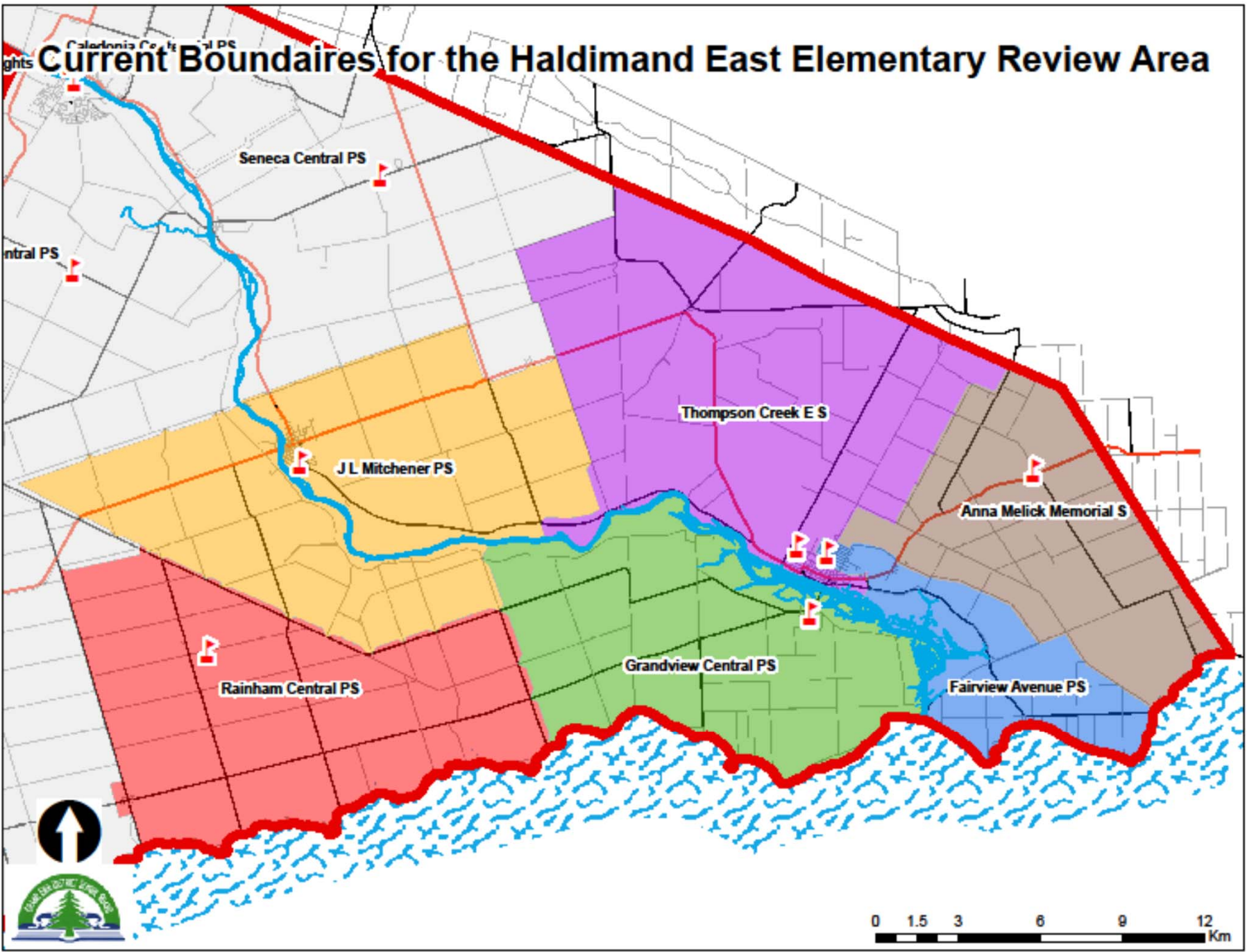
<i>Option 7 - Close Fairview Avenue</i>							
School	Capacity	Portable Capacity	Capacity of Non-Loaded Use	Total Capacity	Enrolment Shift	5 Year Projection	10 Year Projection
Anna Melick	210			210	85	203	205
Fairview Avenue	303		69	closed	-272	0	0
Grandview Central	199	0		199	70	195	198
JL Mitchener	368		46	414	0	277	263
Rainham Central	274	46		320	0	217	212
Thompson Creek	444	46	0	490	117	485	482
Total	1495	92	46	1633	0	1377	1360
Surplus Pupil Spaces (including portables)						256	273
Utilization (excluding portables)						89.4%	88.3%
Utilization (including portable capacity)						84.3%	83.3%

Observations:

- Students would have to be split across the three closest schools to minimize the need for additional portables
- 75% of Fairview students currently walk to school. Most of these students would require busing under this option.
- Additional space required at Thompson Creek while surplus space remains elsewhere
- Thompson Creek Nutrition Program displaced
- Fairview Early Years Program displaced
- one additional bus would be needed to service Grandview; no major swings in average ride time are expected
- Over 250 surplus pupil spaces remain



Growing Excellence... Inspiring Success



Current Boundaires for the Haldimand East Elementary Review Area

Seneca Central PS

Thompson Creek E S

JL Mitchener PS

Anna Melick Memorial S

Rainham Central PS

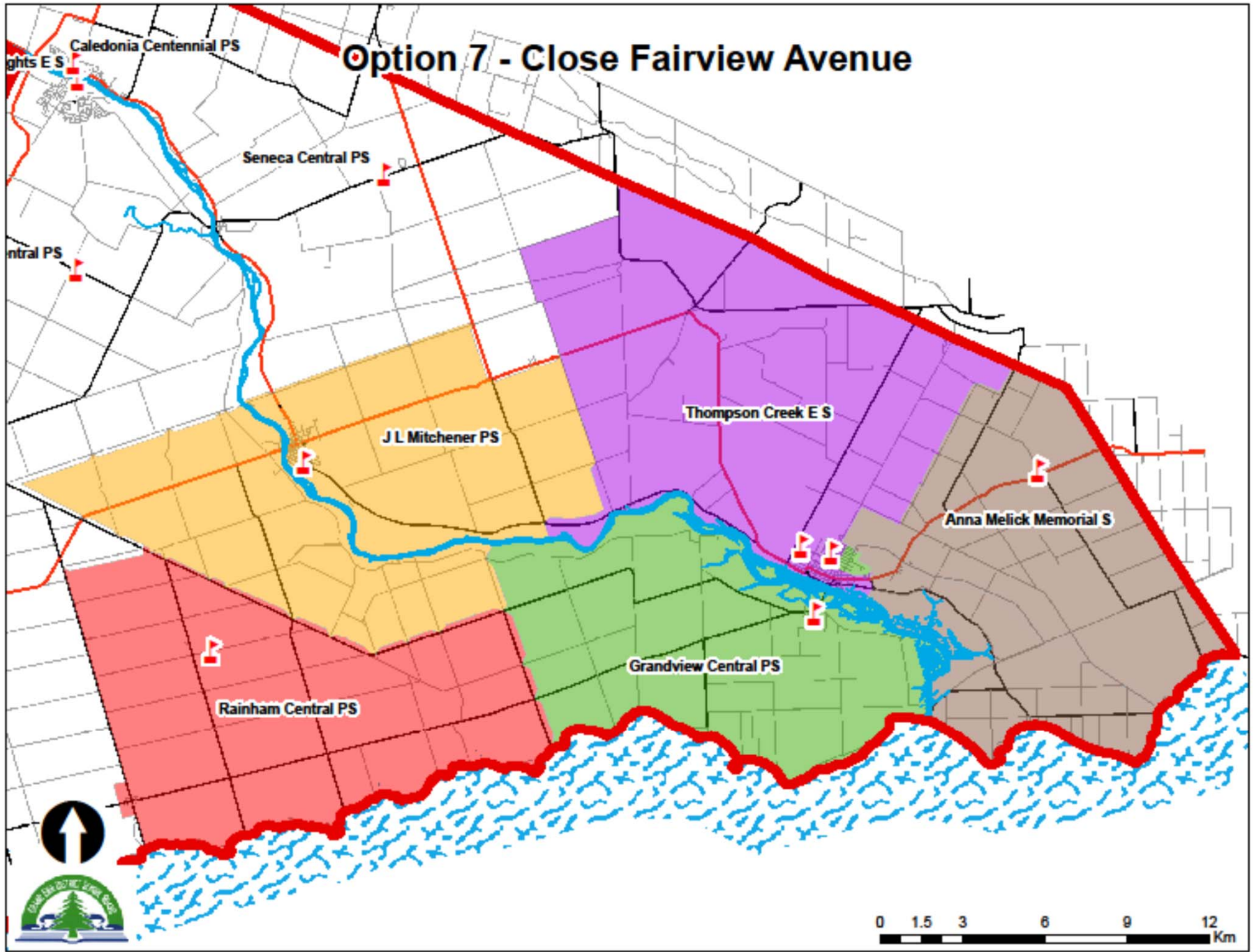
Grandview Central PS

Fairview Avenue PS

0 1.5 3 6 9 12 Km



Option 7 - Close Fairview Avenue



Haldimand East Elementary

Summary of Enrolment and Capacity

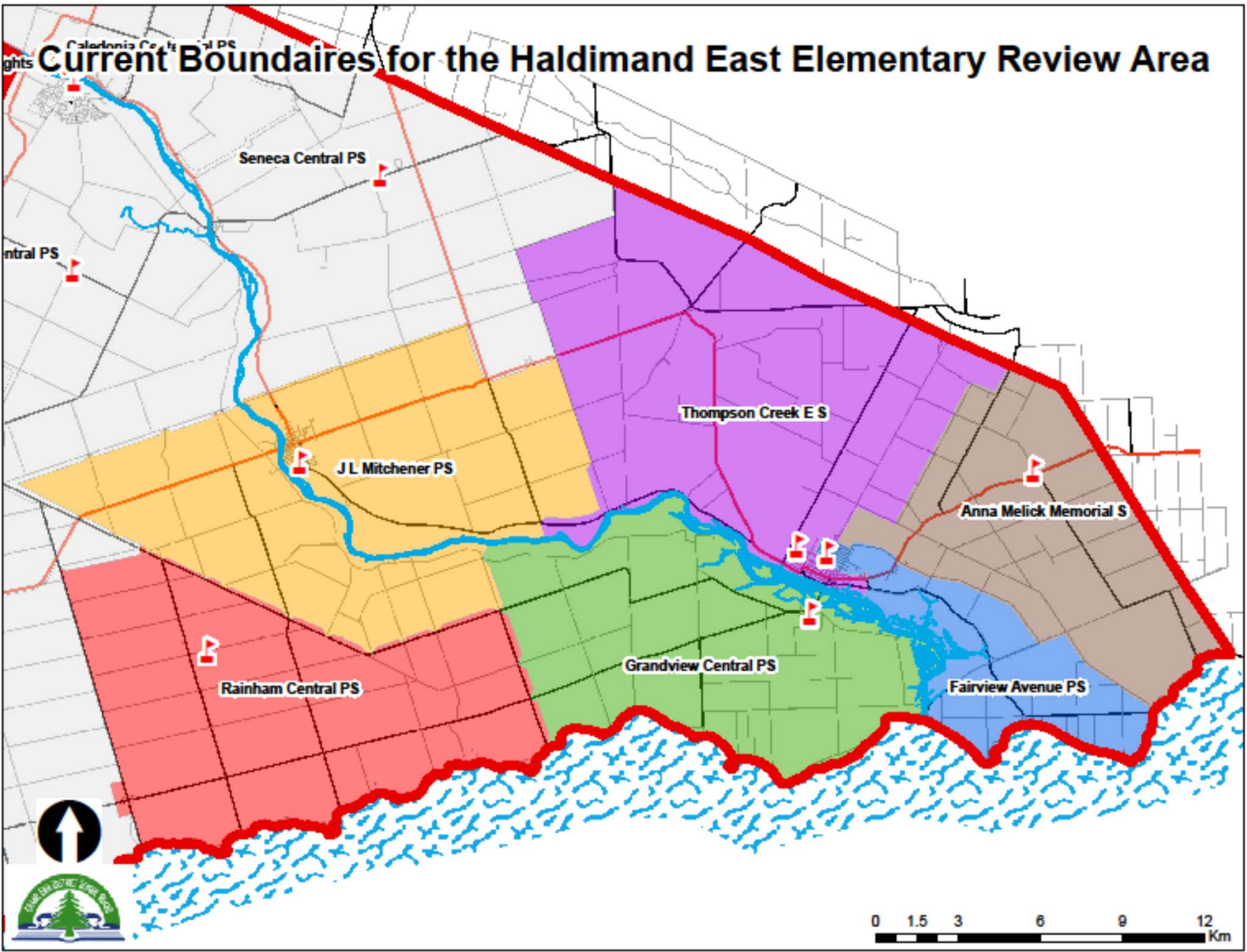
<i>Option 8 - Close JL Mitchener</i>							
School	Capacity	Portable Capacity	Capacity of Non-Loaded Use	Total Capacity	Enrolment Shift	5 Year Projection	10 Year Projection
Anna Melick	210			210	0	118	120
Fairview Avenue	303		69	372	0	272	270
Grandview Central	199	0		199	0	125	130
JL Mitchener	368		46	close	-277	0	0
Rainham Central	274	46		320	65	282	277
Thompson Creek	444	138	0	582	212	580	563
Total	1430	184	69	1683	0	1377	1360
Surplus Pupil Spaces (including portables)						306	323
Utilization (excluding portables)						91.9%	90.7%
Utilization (including portable capacity)						81.8%	80.8%

Observations:

- *JL Mitchener is the only public elementary school in Cayuga*
- *Thompson Creek Nutrition Program displaced*
- *JL Mitchener Early Years Program displaced*
- *Additional space required at Thompson Creek while surplus space remains elsewhere*
- *55% of JL Mitchener students currently walk to school. All JL Mitchener students would require busing under this option.*
- *JL Mitchener enrolment split between two schools*
- *2-3 additional buses would be required to collect the student's from JL Mitchener's catchment; ride times would increase on average but not expected to be great than 60 minutes for the longest rider.*
- *Over 250 surplus pupil spaces remain*



Growing Excellence... Inspiring Success



Current Boundaires for the Haldimand East Elementary Review Area

Seneca Central PS

JL Mitchener PS

Rainham Central PS

Grandview Central PS

Fairview Avenue PS

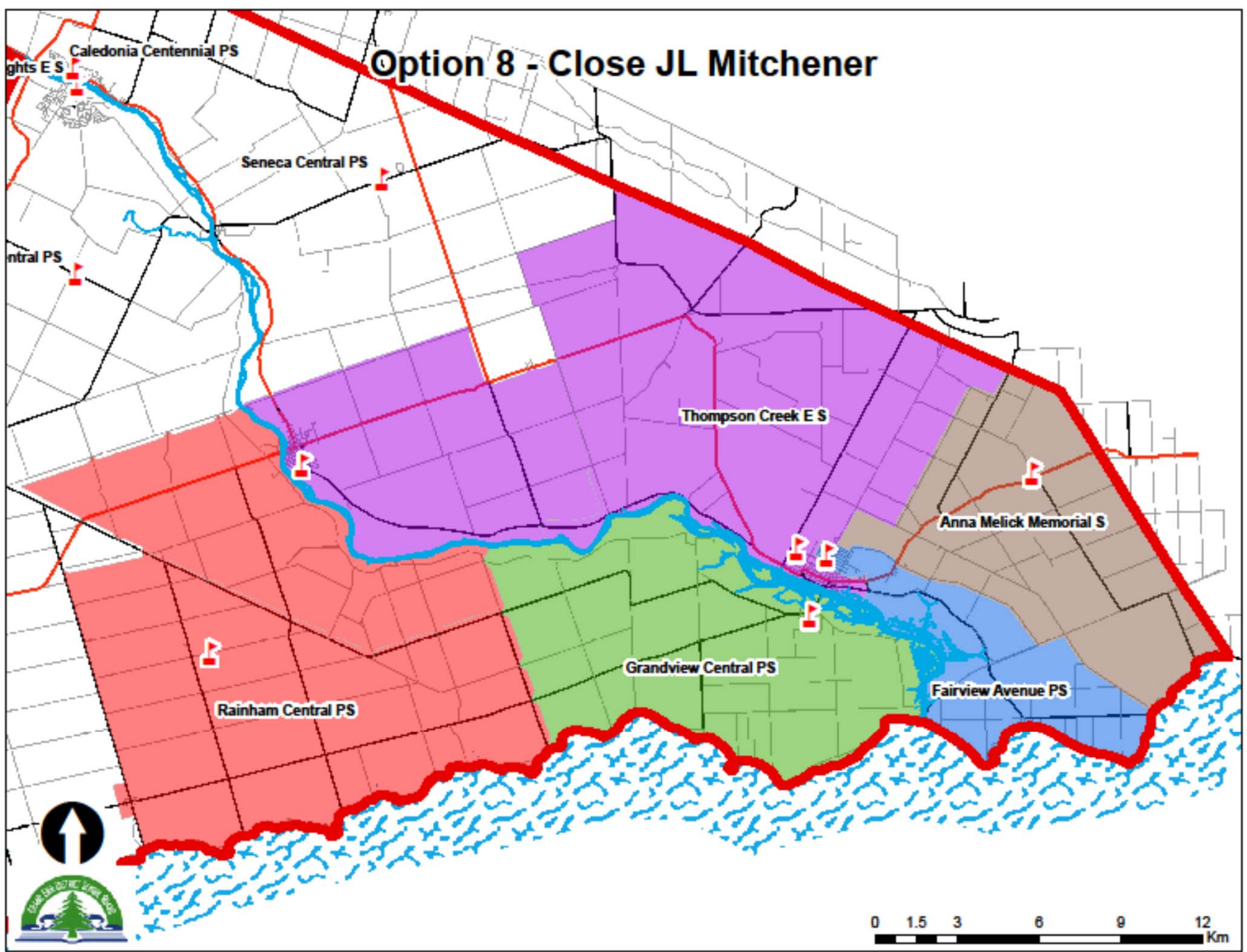
Thompson Creek E S

Anna Melick Memorial S

0 1.5 3 6 9 12 Km



Option 8 - Close JL Mitchener



Haldimand East Elementary

Summary of Enrolment and Capacity

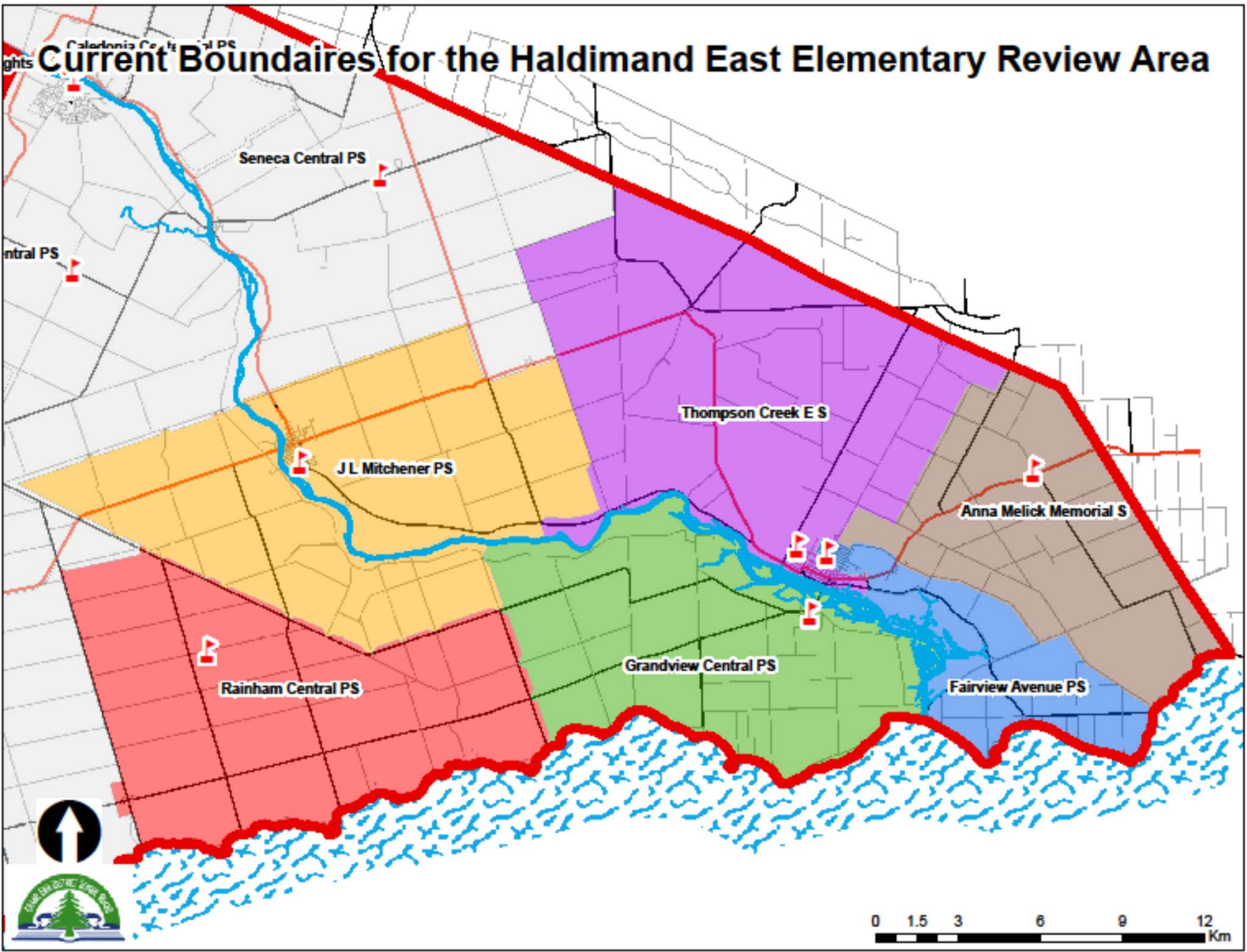
<i>Option 9 - Close Anna Melick and Rainham</i>							
School	Capacity	Portable Capacity	Capacity of Non-Loaded Use	Total Capacity	Enrolment Shift	5 Year Projection	10 Year Projection
Anna Melick	210			0	-120	0	0
Fairview Avenue	303		69	372	85	357	355
Grandview Central	199	0		199	72	195	200
JL Mitchener	368		46	414	120	397	380
Rainham Central	274	46		0	-217	0	0
Thompson Creek	421		23	444	60	428	425
Total	1291	0	138	1429	0	1377	1360
Surplus Pupil Spaces (including portables)						52	69
Utilization (excluding portables)						96.4%	95.2%
Utilization (including portable capacity)						96.4%	95.2%

Observations:

- *Students would have to be split across the closest schools to manage accommodation without an addition or portables*
- *Elementary feeder school boundaries no longer align with secondary catchment areas. Rainham students currently feed into Cayuga SS. Future Gr 8 graduates from Rainham assigned to Grandview would be split for transition to grade 9.*
- *no additional school buses are expected to be needed but ride times on average would increase slightly*
- *Utilization rate well over 85% with portables*



Growing Excellence... Inspiring Success



Current Boundaires for the Haldimand East Elementary Review Area

Seneca Central PS

Thompson Creek E S

JL Mitchener PS

Anna Melick Memorial S

Rainham Central PS

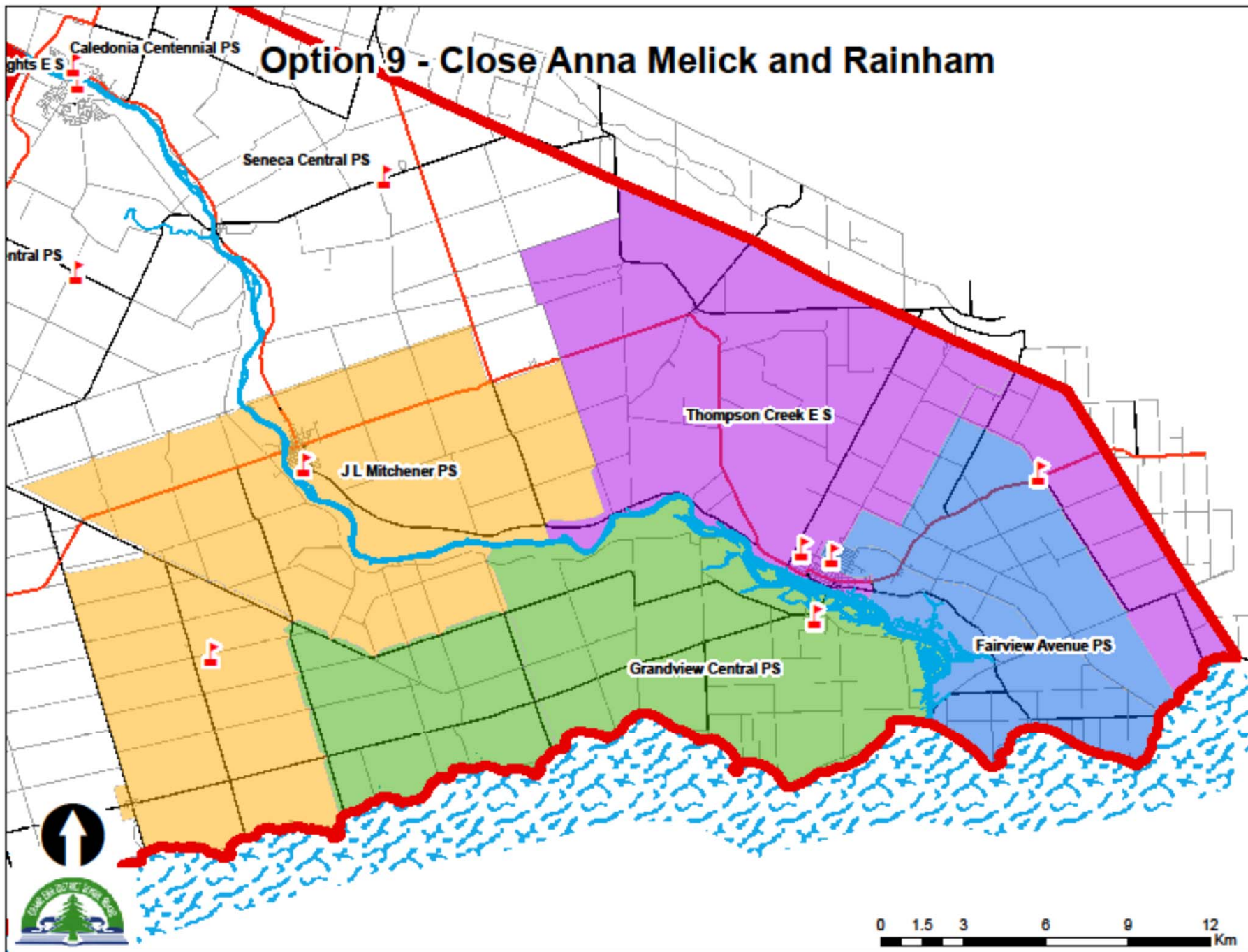
Grandview Central PS

Fairview Avenue PS

0 1.5 3 6 9 12 Km



Option 9 - Close Anna Melick and Rainham



Haldimand East Elementary

Summary of Enrolment and Capacity

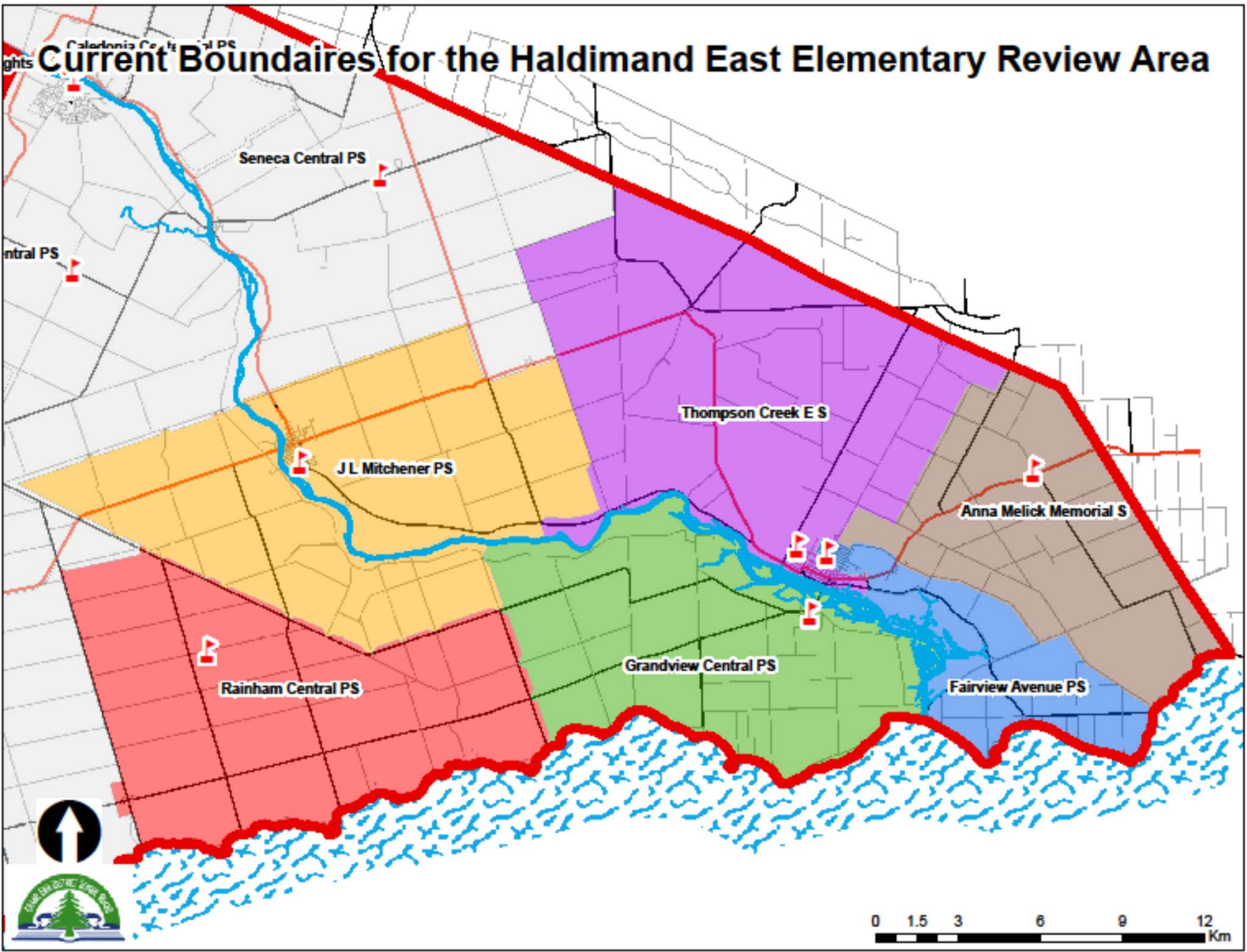
<i>Option 10 - Reassign Yarmey to Sutor Rd to Dunnville Schools - Remove Rainham and JL Mitchener from review.</i>							
School	Capacity	Portable Capacity	Capacity of Non-Loaded Use	Total Capacity	Enrolment Shift	5 Year Projection	10 Year Projection
Anna Melick	210			210		118	120
Fairview Avenue	303		69	372		272	270
Grandview Central	199	0		199	16	141	146
JL Mitchener	368		46	remove from ARC			
Rainham Central	274	46		remove from ARC	-16		
Thompson Creek	421		23	444		368	365
Total	1133	0	138	1225	0	899	901
Surplus Pupil Spaces (including portables)						372	370
Utilization (excluding portables)						70.7%	70.9%
Utilization (including portable capacity)						73.4%	73.6%

Observations:

- *Status Quo with one minor boundary adjustment*
- *Over 370 surplus pupil spaces remain*
- *Surplus space at JL Mitchener not recognized (approx. 80 pupil places)*
- *no additional school buses would be needed and a slight increase in average ride times would be expected.*



Growing Excellence... Inspiring Success



Current Boundaires for the Haldimand East Elementary Review Area

Seneca Central PS

JL Mitchener PS

Rainham Central PS

Grandview Central PS

Fairview Avenue PS

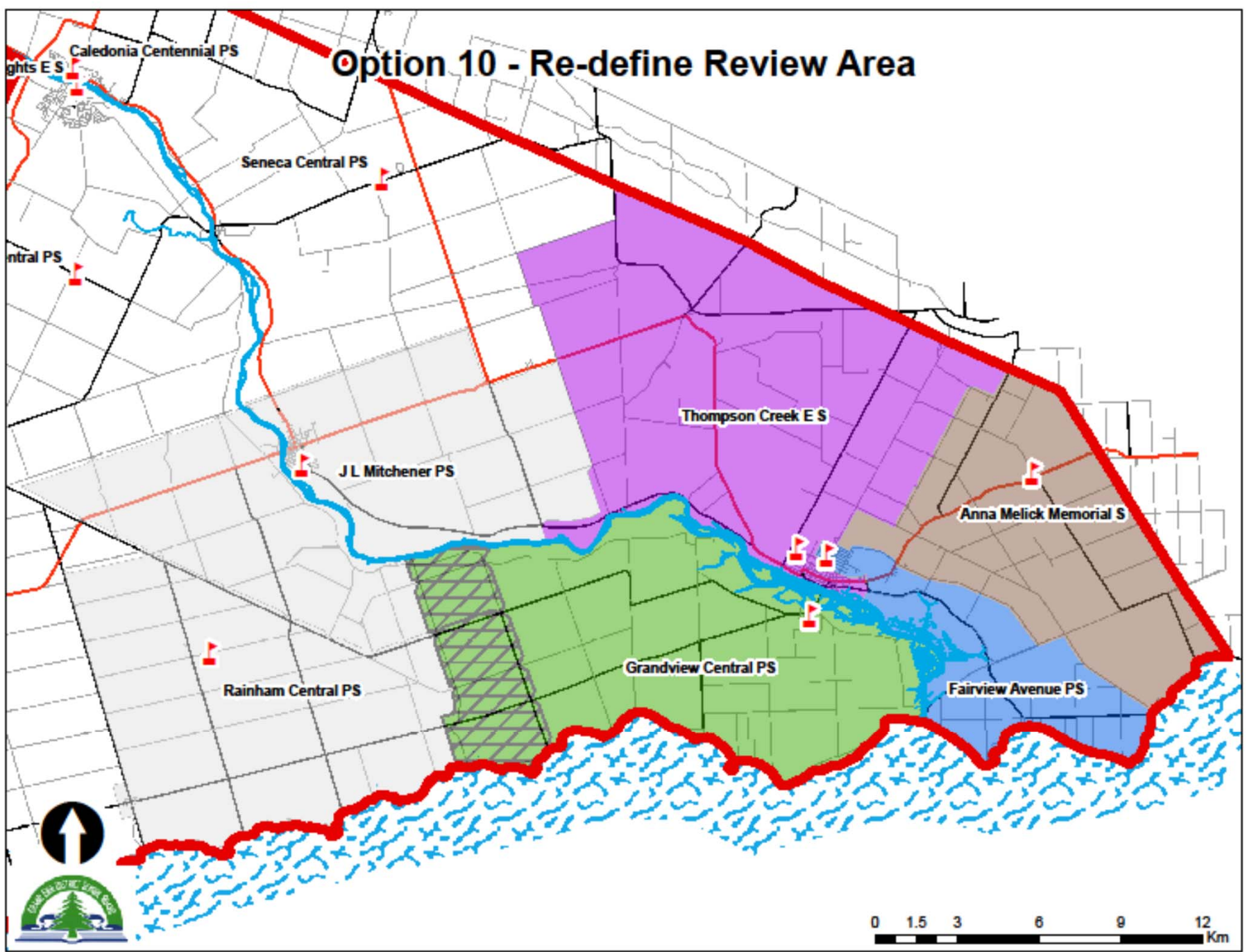
Thompson Creek E S

Anna Melick Memorial S

0 1.5 3 6 9 12 Km



Option 10 - Re-define Review Area



Haldimand East Elementary

Summary of Enrolment and Capacity

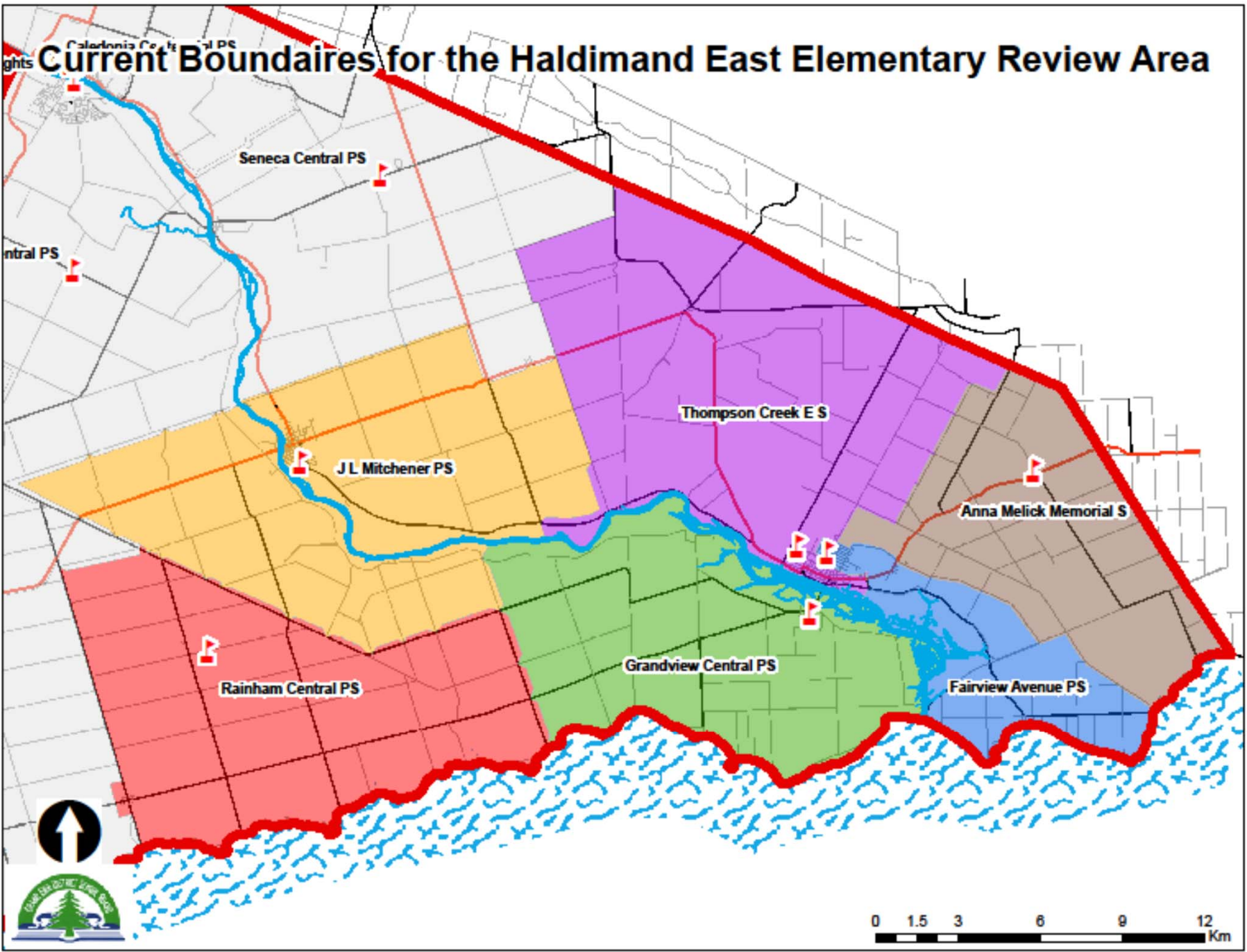
<i>Option 11 - Close Anna Melick, Close Grandview and assign all student to a new school to be built at the Fairview site</i>							
School	Capacity	Portable Capacity /Added Capacity	Capacity of Non-Loaded Use	Total Capacity	Enrolment Shift	5 Year Projection	10 Year Projection
Anna Melick	210			closed	-120	0	0
Fairview Avenue	372	160	0	532	250	515	520
Grandview Central	199	0		closed	-130	0	0
JL Mitchener	368		46	414		277	263
Rainham Central	274	0		274		217	212
Thompson Creek	421		23	444		368	365
Total	1435	160	69	1664	0	1377	1360
Surplus Pupil Spaces (including portables)						287	304
Utilization (excluding portables and added capacity)						91.6%	90.4%
Utilization (including portables and added capacity)						82.8%	81.7%

Observations:

- A new school would be constructed to replace Fairview and accommodate current Fairview, Anna Melick and Grandview students
- Priority Capital Approval from the Ministry of Education would be required
- Fairview Early Years Program displaced
- Additional 7 minute bus ride (2.7 km) for Grandview students
- Additional ride time for students in east end of Anna Melick catchment area, shorter ride time for others.
- no additional buses required
- All students from each closed schools accommodated at a new school.
- Utilization rate over 80% with portables and added capacity
- no effect on transitions to Secondary School
- The resulting school would still serve a large population who currently walk to school



Growing Excellence... Inspiring Success



Current Boundaires for the Haldimand East Elementary Review Area

Seneca Central PS

JL Mitchener PS

Rainham Central PS

Grandview Central PS

Fairview Avenue PS

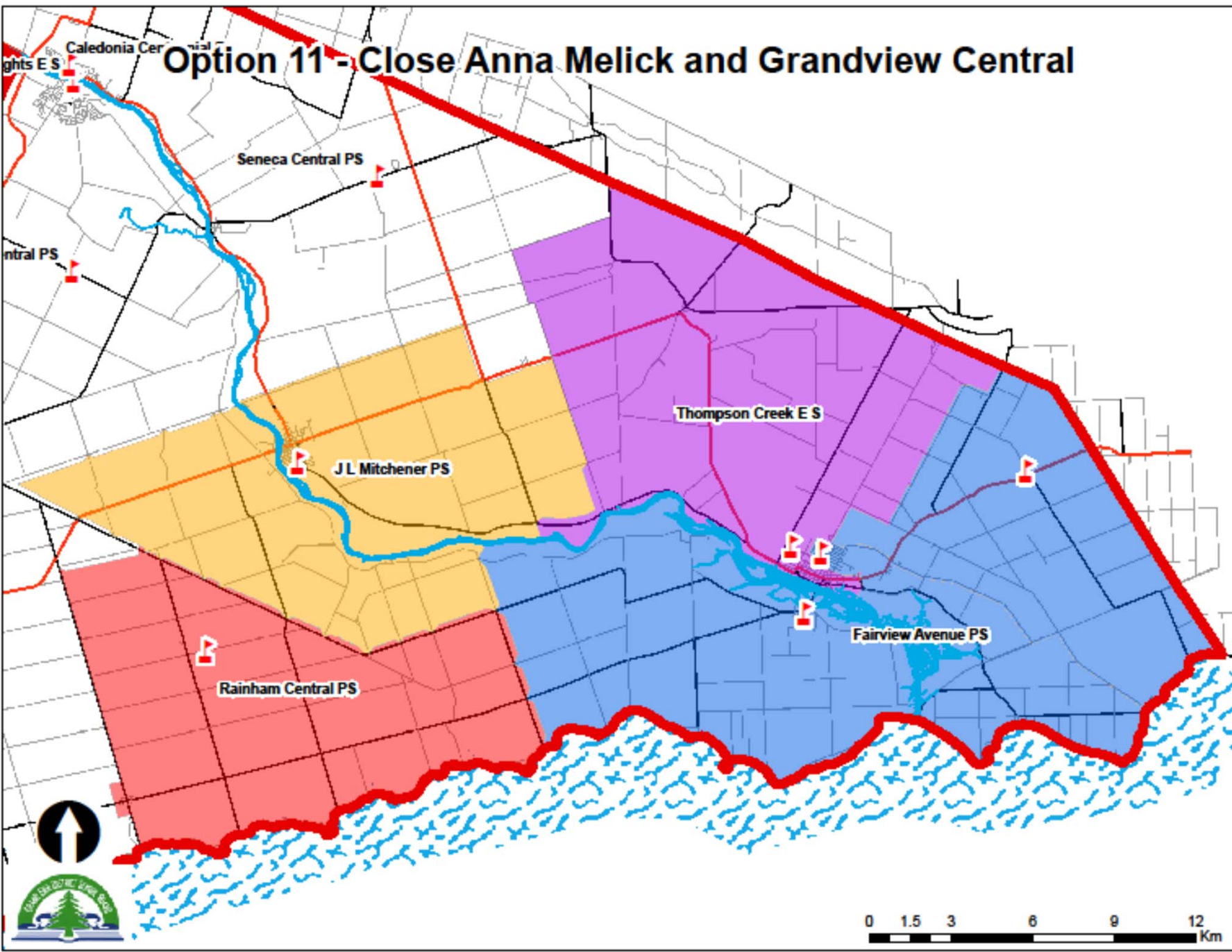
Thompson Creek E S

Anna Melick Memorial S

0 1.5 3 6 9 12 Km



Option 11 - Close Anna Melick and Grandview Central



Transportation Costs

- Each 72 passenger bus costs \$37,400 per school year.
- Base service includes 180 minutes daily operating time and 30 km.
- Routes operating longer than 180 minutes add \$3.68/15 minute interval daily.
- Routes longer than 30 km add \$0.555/km daily
- Options 1-5, 9, 10 and 11 would not require additional buses. Minor changes to route length and time would be needed with incremental increases.
- Options 6,7 and 8 require additional buses to be added



Growing Excellence... Inspiring Success