



Land Acknowledgement

The Grand Erie District School Board recognizes the Haudenosaunee and Anishinaabe people, as the traditional peoples of this territory. We acknowledge and give gratitude to the Indigenous peoples for sharing these lands in order for us to continue our work here today.

AGENDA

Time	Item	Info.	Dia.	Res.	Responsibility
A-1 Opening					
6:00	(a) Welcome/ Land Acknowledgement Statement				W. Rose
	(b) Roll Call			√	P. Curran
	(c) Agenda Additions/ Deletions/ Approvals		√	√	W. Rose
B-1 Timed Items					
	(a) Introduction -Robin Staats – System Principal Leader of Indigenous Education and Equity	√	√		R. Staats
	(b) A Day in the Life of the Behaviour Counsellor	√	√		J. White / J. Cassidy
C-1 Business Arising from Minutes and/or Previous Meetings					
	(a) Ratification of Minutes April 22, 2021 *			√	W. Rose
	(b) Grand Erie's Special Education Plan 2020-21 – Final *	√	√	√	SEMT
	(c) SEAC Committee Member Input – Survey Monkey Feedback	√	√		W. Rose/P. Boutis
	(d) Special Education and Mental Health Summer Program Offerings - Update	√			L. Sheppard/ P. Bagchee/ K. Mertins
D-1 New Business					
	(a) Special Education Funding 2021-22 – GSN Highlights	√	√		L. Thompson
E-1 Other Business					
	(a) Membership Update – New Member	√			W. Rose



Time	Item	Info.	Dia.	Res.	Responsibility
F-1 Standing Items					
	(a) Policy/Procedures Out for Comment Please send your comments to kathryn.giannini@granderie.ca by <u>May 27, 2021</u> <ul style="list-style-type: none"> • P1 Special Education Guiding Principles • F104 Advertising • HR109 Offence Declaration • P108 Secondary Programs of Choice • SO126 Volunteers 	√			P. Curran
	(a) Trustee Update – Current Board Activities	√			R. Collver/ T. Waldschmidt
G-1 Information Items					
	(a) None.				
H-1 Community Updates					
	(a) None.				
I-1 Correspondence					
	(a) LDAO Circular – May 2021*				W. Rose
	(b) Ltr – Dr. C. Montgomery re: EQAO & OSSLT Assistive Technology – May 12, 2021 *				
J-1 Future Agenda Items and SEAC Committee Planning					
			√		W. Rose
K-1 Next Meeting					
	Thursday, June 17, 2021 MS Teams	√			W. Rose
L-1 Adjournment					
	Meeting adjourned at p.m.			√	W. Rose

Note: Column Abbreviations

* Attachments to the agenda

Info. Item for information only

Dia. Item for dialogue

Res. Item for resolution or recommendation

SEMT Special Education Management Team

AGENDA ITEM(S) Standing:

- LDAO SEAC Circular September, November, February, April and June (as available).



Special Education Advisory Committee SEAC 20-08

Virtual MS Teams

Thursday, April 22, 2021 – 6:00 p.m.

MINUTES

SEAC Members

Present: Chair W. Rose, L. Boswell, P. Boutis, C. Brady, T. Buchanan, R. Collver, L. DeJong, A. Detmar, M. Gatopoulos, K. Jones, T. Sault, L. Scott, J. Trovato, T. Waldschmidt, T. Wilson.

Regrets: M. Carpenter, A. Csoff, R. Winter.

Resource Staff

Present: P. Bagchee, L. Boudreault, K. Mertins, L. Sheppard, L. Thompson, J. White

Guests:

Present: J. Gemmill, ITS Staff, R. TenBrinke, Child and Youth Worker

Recorder: P. Curran.

A-1 Opening W. Rose

(a) Welcome

Chair Rose welcomed everyone, called the meeting to order at 6:03 and read the Land Acknowledgement Statement.

(b) Agenda Additions / Deletions / Approvals W. Rose

- i. Add H-1 Community Updates (a) Woodview Updates – A. Detmar.
- ii. Add D-1 New Business (d) Virtual Learning Update – R. Collver.

Moved by: C. Brady
Seconded by P. Boutis

THAT the SEAC 20-08 Agenda for Thursday, April 22, 2021 be approved as amended.

CARRIED

B-1 Timed Items W. Rose

(a) A Day in the Life of the Child and Youth Worker R. tenBrinke / P Bagchee

P. Bagchee introduced the new series that will give members a deeper understanding of the roles Special Education Support Staff play in helping students. She introduced R. tenBrinke a Child and Youth Worker (CYW) who shared slides to augment her presentation.



Special Education Advisory Committee SEAC 20-08

Virtual MS Teams

Thursday, April 22, 2021 – 6:00 p.m.

The tiered model of service as it applies to CYWs was presented to the group. In Tier 1, CYWs deliver classroom presentations that develop skills in social-emotional understanding, healthy relationships, self-regulation, and mental health and well being. They also connect families with community resources. Tier 2, CYW services focus on targeted prevention in smaller groups.

For students requiring continued support, following parental consent, Tier 3 offers more individualized intervention, which includes additional coaching and practicing.

The CYW is part of the In-School Team meetings, which include the school administrator, the Learning Resource Teacher and usually the classroom teacher.

Ms. tenBrinke shared her Day in the Life of a CYW This can vary between CYWs. Ranae is a person who thrives on routine and organization and she responded to these questions:

1. How Many Students Do You Support in a Week?
Ms. tenBrinke told members she provides Tier 1 and 2 programming to between 120-300 students per week from 12 -14 classrooms or small groups.
2. How Many Students Do You Support in a Year?
 - a) In Tier One, she has served approximately 1,000 individual students to date this year.
 - b) In Tier Two, she has run 12 small groups involving 40 students.
 - c) Wellness Lessons were run in 10 classes involving approximately 215 students, though many classes had multiple lessons.
3. How Do Schools Access Your Support?
Schools can invite their CYW to an In-School Team Meeting (ISTM) which should include a principal, a Learning Resource Teacher and the Classroom Teacher (if possible).
4. Describe a Day in Your Work Life?
 - She reviews any presentations she is planning for that day.
 - During COVID restrictions she tries to limit her visits to one or two schools per day.
 - She will also provide school staff with professional development training.
 - Her day may include ISTM or other scheduled meetings and could also contain future planning meetings with other CYWs and Social Workers.
 - Her day usually ends at her office which provides time to review her next day's schedule and begin preparation for any future presentations or meetings.



Special Education Advisory Committee SEAC 20-08

Virtual MS Teams

Thursday, April 22, 2021 – 6:00 p.m.

5. What is Your Role in the Tiered Approach to Learning?

Ms. tenBrinke emphasized that all the supports focus on Social Emotional Learning, Self-Regulation, Healthy Relationships, Mindfulness and Overall Wellbeing.

Tier 1 - She provides support to whole classrooms and connects families to community agencies and resources. This provides educators and students with a better understanding of mental health and well being.

Tier 2 - She meets with small groups of students to focus on more targeted coaching in specific areas.

Tier 3 - She provides individualized support, coaching and script to vulnerable students.

6. How does Your Role Support Students in the Classroom?

Ms. tenBrinke noted this was her favourite question as she is very passionate about the classroom model and believes it is critical that all students receive the same message which helps them learn empathy, caring for one another and maintaining healthy relationships.

When students learn these skills, they are equipped to help and encourage their peers. The result is students feel more included and supported.

She recently started her presentations with a mindfulness exercise and was astounded at the increase in students' receptivity to learning.

Her laptop screen has information on the Kids' Help Phone. Ms. tenBrinke is amazed at how many students write down this information.

CYW have become accepted as a part of the school. They are a trusted adult that students know and can come to for help or to share their stories of success.

Chair Rose thanked Ms. tenBrinke for her enthusiastic presentation and noted how wonderful to hear her story and the difference her work is making for our students.

A copy of the power point presentation was presented to SEAC members.



Special Education Advisory Committee SEAC 20-08

Virtual MS Teams

Thursday, April 22, 2021 – 6:00 p.m.

C-1 Business Arising from Minutes and/or Previous Meetings

W. Rose

(a) Ratification of Minutes March 11, 2021

Moved by: K. Jones
Seconded by: M. Gatopoulos

THAT the minutes for SEAC 20-07 be approved as circulated.

CARRIED

(b) Letter to Ministry of Education/EQAO
– AT Barriers for Field Test of Grade 9 Math and OSSLT

W. Rose

Ms. White noted Grand Erie students would not participate in the field test so this does not impact our special education students.

Important that the company hired to create the field test has made the adjustments when the actual test is ready to be administered.

Members would like the word “important” removed from the second to last paragraph.

Trustee. Collver asked to have Grand Erie DSB Trustees, MPP Bouma and MPP Barrett receive copies of the letter.

Superintendent Thompson asked to have the letter shared with other Ontario SEAC.

Moved by: L. Boswell
Seconded by: K. Jones

THAT the letter regarding EQAO test AT Barriers be sent as amended and include copies to Grand Erie DSB trustees, Brant MPP and Haldimand Norfolk MPP and, if possible, other Ontario SEAC.

CARRIED

(c) Book Club – Pride and Prejudice by Sarah General

L. Thompson

Superintendent Thompson reminded members of the book club and advised she does not yet have a date for the review.

Any SEAC members who would like her to purchase a copy of the book for them should please notify the recording secretary and we will ensure books will be made available for them.

(d) Survey Monkey

W. Rose

Chair Rose noted a document will be shared with members in the next few days following review by the Special Education Management Team.



Special Education Advisory Committee SEAC 20-08

Virtual MS Teams

Thursday, April 22, 2021 – 6:00 p.m.

D-1 New Business W. Rose

- (a-1) Summer School Programming for Students with Special Education Needs Special Education Management Team

L. Sheppard, Coordinator of Applied Behaviour Analyst for Special Education noted there are three in person programs in the preliminary planning stage for the summer of 2021.

1. Summer School Transition for Kindergarten to Grade 3 Students L. Sheppard

This is a half day face to face skill building program implemented in groups of three to eight students by a teacher and an Educational Assistant or Designated Early Childhood Educator with support from a Child and Youth Worker. Students will receive support in Tier 1 and Tier 2 interventions to assist with self-regulation and behaviour management skills to support a positive transition back to school.

Staff professional development is also required for the program and will occur the week before students attend. It will be supervised by a Principal and Vice-Principal.

2. Hello Classroom Project – for Students in Autism and Life Skills Classes L. Boudreault

This program is directed to elementary and secondary students in Autism and Life Skills classes who have mostly been involved with remote learning since March 2020.

Opportunities will be created for students to visit their classroom, meet their teachers and participate in positive school-engaging activities. Transitioning from virtual to in class learning may be difficult for some students with this profile and the positive opportunity for transition practice will benefit them as well as their teachers.

3. This is my New School Program for Kindergarten Students with Autism. L. Sheppard

Considering a half day face to face skill building program designed for students with deeper needs in social and communication skills to help them acclimatize to school routines. Implemented by teacher with assistance from an Educational Assistant or a Designated Early Childhood Educator and supervised by a Principal or Vice-Principal.

This program contains a component of data collection by a Learning Resource Teacher and / or a Speech Language Pathologist which will support a deeper understanding of student need as they transition to school.

The program is intended to provide more sustained support in Tier 2 or Tier 3 interventions.



Special Education Advisory Committee SEAC 20-08

Virtual MS Teams

Thursday, April 22, 2021 – 6:00 p.m.

(a-2) Virtual Summer Programs

L. Boudreault

Ms. Boudreault explained the board is considering summer programs 2021 offered virtually to assist SEA students through LEARNStyle, the board's SEA training company.

The following four options are under consideration:

1. Enhancing literacy skills using assistive technology, focusing on written output and reading comprehension.
2. Application of writing and comprehension strategies to tackle questions that may be encountered during academic assessment.
3. Math exploration and practice using assistive technology and technology tools while learning strategies to support comprehension, math thinking and problem solving.
4. Computation, problem-solving strategies and basic coding concepts and robotics for students with an Autism diagnosis.

(a-3) Additional Tier 3 Supports

K. Mertins

1. Psycho-educational and Speech-Language Assessments will be conducted in early July, but the number of assessments will be limited due to the intensive nature of the testing Staff are taking this opportunity to back fill some of the assessments for students who are on the wait list.
2. Attendance Counsellor intervention in late August will focus on early re-engagement of the most vulnerable students and families.

(a-4) Mental Health Services and Supports

P. Bagchee

Ms. Bagchee shared that additional funding will allow for summer Mental Health supports and services for students.

1. Social Worker Services during July and August
Mental health support will continue over the summer. It will also be available to students in the summer school and Camp Sail summer program. Staff will discuss in home coping and wellness strategies and assist students and families with community agency connections and resources. Social Workers will provide transition support to families and the students returning to in-class learning.

2. Child and Youth Workers

Support the Summer School Transition Program.

3. SEAC 20-09 Mentally Healthy Return to School (potential class)

May 12, 2021



Special Education Advisory Committee SEAC 20-08

Virtual MS Teams

Thursday, April 22, 2021 – 6:00 p.m.

Resources for parents and presentations which include Q&A. Increase educator and school board staff understanding of mental health literacy.

P. Boutis asked how staff planned to meet the similar needs of students not in specialized classes. Ms. Boudreault advised they had to concentrate the supports in places where they knew a larger number of students would be in need and reminded members that summer programs are also dependent on how many staff will be reenergized enough to work over the summer.

4. Student Success and Mental Health Wellbeing Collaboration

Grand Erie was successful in receiving a Focus on Youth grant. This will be made available to approximately 25 Brantford / Brant County students. Geographically this is a high-compensatory area. Student Success will be supporting credit recovery or credit updating, or connections to paid employment or pre-employment. Selected students must participate in mental health literacy program.

The grant period is from May to August, but mental health supports will extend into the school year.

(a-5) Input from SEAC

Special education management team asked members to respond to two questions when they consider the target groups for the summer programs, supports and services outlined.

1. What areas of focus should we intensify in our planning so that students have the most opportunity for personal growth?

P. Boutis – how to address the similar needs of students who are not in these particular classes?

Dr. L. Scott – In the future, could the programs focus on all neurodevelopmental disorders instead of just ASD?

L. DeJong – is there flexibility of consideration for those students who may get missed, i.e., without ASD diagnosis, but who present with similar challenges, self-regulation needs, etc. and who would benefit from these strategies?

A. Detmar – would like to see Mental Wellness offered across the board because even students who have not been identified have been impacted.

P. Bagchee – advised the Ministry direction was clear that our role is targeted intervention.



Special Education Advisory Committee SEAC 20-08

Virtual MS Teams

Thursday, April 22, 2021 – 6:00 p.m.

L. Boudreault – staff had to concentrate the supports according to funding requirements and in places we know a larger number of students are in need in order to divide the funding most efficiently. Will work on cases where one or two students are located to develop a more individualized plan for the last couple of weeks in August.

2. What concerns might parents have with the summer programming and return to school that we must consider?

W. Rose – is accessibility to technology a concern?

L. Boudreault – learnStyle does a great job and will contact each family before the program starts to ensure technology is working correctly.

L. DeJong – Parent concerns could include care of siblings, as it's summer and there are limited summer camp options so supporting their child for assessments could be a barrier.

K. Jones – with parent concern over school and class stability would like to see more transition time for every family.

L. Boswell – how many psycho-educational and speech language assessment will be done during the summer.

K. Mertins – it is too early to know which staff have existing commitments, as well they all need a break and some holiday time. Once we determine staff availability the number of assessments that can be completed will be determined.

R. Collver – wanted to congratulate everyone who responded so well to the changing environment. She asked for a recap of virtual programs during this past year.

3. Recap of Virtual Programs offered during 2020-21

L. Boudreault reported there were approximately 28 students in the SEA technology program and 24 students in the Autism coding program. She noted registration was initially higher, but that some families had planned vacations whose children did not end up participating. It is important to keep that in mind for this summer.

L. Boudreault and K. Mertins left members with a reminder that the operation of summer programs or summer assessments is also dependent on how many staff are available and / or re-energized enough to work over the summer. An update on the viability of summer programs and assessments will be provided to SEAC.



Special Education Advisory Committee SEAC 20-08

Virtual MS Teams

Thursday, April 22, 2021 – 6:00 p.m.

Members were asked to review the draft plan which includes previous SEAC input and which will be returned for final approval at the May SEAC meeting before presentation to the Board of Trustees.

Members were asked to provide any additional input for consideration to the recording secretary no later than Monday May 10, 2021 by 4:00 p.m.

The current version is posted on the Grand Erie website if members want to use it for comparison.

P. Boutis noted the document is large and very wordy and could be difficult for some parents so asked if a summary could be made for parents to review and then consult the plan if they wish more information.

(c) Board Achievement Plan Mid-Year Update

L. Thompson

The Student Achievement Plan was updated and sent to the Board of Trustees at the end of March.

The focus this year is on the continued implementation of the renewed model in special education, implementing fulsome Tier 1 supports in classrooms before considering the implementation of Tier 2 and 3 strategies. By necessity, there is an added focus on providing strategies to support students with special education needs who have chosen to learn virtually.

A new focus in the Board Achievement Plan is on student well-being. Updates on strategies to support students to develop social-emotional well-being were shared.

Staff received anecdotal evidence from secondary students who shared they were more at ease sharing ideas and thoughts in MS Teams breakout rooms than they were in classrooms.

Teachers reported breakout rooms as very beneficial for teaching small groups.

(c-1) Rick Hansen Foundation Partnership

K. Mertins

One of the unexpected outcomes following the overwhelming success of the RHF Ambassador presentations organized for Grand Erie's Accessibility Awareness month in December 2020 was the development of an Accessibility Certificate for students enrolled in the Construction Specialist High Skills Major program. D. Elkema, Teacher Consultant Student Success was instrumental in organizing this learning opportunity which is now available across the province.,



Special Education Advisory Committee SEAC 20-08

Virtual MS Teams

Thursday, April 22, 2021 – 6:00 p.m.

Ms. Mertins will send the program flyer to the recording secretary for sharing with SEAC.

(d) Remote Learning

R. Collver

Trustee Collver reported a call she received from a parent whose child was in a remote learning class. She asked for a refresher on how we support parents and students who are teaching / learning remotely.

Superintendent Thompson indicated that the Ministry of Education provided messaging following the last return that clarified we needed to look at student need for in-person learning on a case-by-case basis before determining which model of learning will best support the child. .

Students who take part in remote learning will be offered both synchronous and asynchronous lessons based on students' learning styles determined by working with families to discover which is most appropriate for them.

Ms. Boudreault informed members the board purchased additional Lexia Learning (literacy) licences and TeachTown (for students on the Autism Spectrum) in anticipation of a greater need occasioned by an increase in or a return to remote learning. Lexia can be tailored to individual student needs.

Ms. DeJong questioned if support was available for all students or limited to students in Self Contained classes.

J. White advised staff is currently working to establish a triage method with school administrators. The distinguishing differences begin with identified students in Self Contained classes, then profiling students with pervasive needs, then students in regular classes with needs. Students will receive individual case by case evaluation this time around.

E-1 Other Business

W. Rose

(a) Educational Assistants (EA) Allocation 2021-22 – Draft Board Report

J. White

Ms. White reviewed the criteria for allocating Educational Assistants reminding members the role is to support classroom learning. She reviewed the outline of the three areas used to help allocate EA support which include 1) medical/physical needs; 2) safety and supervision requirements and 3) Communication Autism. Classroom capacity is also a factor on allocation.

The primary goal of educational assistant support is to help students develop independence. Educational assistants are assigned to schools in a shared support model, though it is recognized that some students will require direct support based on their individual needs.



Special Education Advisory Committee SEAC 20-08

Virtual MS Teams

Thursday, April 22, 2021 – 6:00 p.m.

The board no longer has a Transition EA but it will be included in the report until the position is no longer applicable.

R. Collver asked if the role of the EA is being reviewed.

J. White advised staff is currently updating the role description of the EA with CUPE as this exists within their contract language. New language will be more aligned with the shifting operational needs of the renewed model.

R. Collver asked where funding for the temporary EA come from.

J. White advised with permission they can hold back some funding in case there is student fluctuation over the summer.

The draft report will be presented to the Board of Trustees on May 10 and she invited any questions or input from members.

F-1 Standing Items

W. Rose

(a) Policy/Procedures Out for Comment

P. Curran

Members were advised to send any comments about F7 Disclosure of Wrongdoing (Whistle-Blower) and SO14 Equity and Inclusive Education to kathryn.giannini@granderie.ca by April 30, 2021

(b) Trustee Update – Current Board Activities

T. Waldschmidt / R. Collver

1. T. Waldschmidt

- Leading and Learning in Pandemic - Prior to March / April Break, all special education teachers, Educational Assistants and Learning Resource Teachers were able to receive their first COVID vaccine. The Brant County Health Unit has extended this offer to all staff who work or live in Brant County to join the cancellation list. Hope to work with both public health units to extend the vaccination to all Grand Erie staff.
- GEPIC presentation April 22/2021 by Ann Douglas on Parenting in a Pandemic. This will be recorded for viewing by anyone who had a conflict with the time. Ms. Douglas is a featured speaker on CBC and is the author of two parenting books.
- GEPIC presentation April 29/2021 by Dr. Pamela Rose Toulouse on Indigenous Education and Reconciliation. Dr. Toulouse is a Professor at Laurentian University and a 3M National Teaching Fellow. This presentation will also be recorded for those who are unable to view at the time.
- Many days of significance including national volunteer week; please check out our Twitter and re-tweet comments. [@gedsb on Twitter](#)
- We are revising our multi-year strategic plan and Trustees and senior administration will be gathering system wide feedback. He will be



Special Education Advisory Committee SEAC 20-08

Virtual MS Teams

Thursday, April 22, 2021 – 6:00 p.m.

inviting a SEAC representative to participate in a working group. He and Trustee Collver will bring more information closer to the date.

- This week launched the Grand Erie mobile app for parents and staff which will provide a hub with all school related information in one place. Includes calendar, news, updates, transportation information and access to school social media.

2. R. Collver

- Thanked everyone for the remote learning as we know it has been a challenge for everyone.
- Grand Erie is reducing our carbon footprint through the implementation of solar panels and increased use of controlled lighting and heating. We are doing our best to help save our planet.
- Thank you for completing the survey; we are waiting for Ministry grants to be released so this year's budget can be finalized.
- Trustees were very pleased to learn some of our staff could access vaccinations on a priority list.
- Grand Erie received \$10 million to upgrade schools and support buildings and to create some outdoor classrooms.

G-1 Information Items

W. Rose

(a) SEAC Representative – Strategic Plan Participants

L. Thompson

Superintendent Thompson reported that W. Rose and L. DeJong each volunteered to participate in a working group to support the review and renewal of Grand Erie's Multi-Year Strategic Plan.

(b) SEAC Membership Update

W. Rose

Further to an update from last month regarding attendance requirements Ms. Rose advised two members have been absent without notice and will each receive letters that their membership has been forfeited.

A plan for recruitment will be discussed at a future meeting.

H-1 Community Updates

W. Rose

(a) Woodview Mental Health and Autism Services

A. Detmar

1. Their agency is currently closed to foot traffic two weeks, but clients can still be seen virtually. Appointment format will be reassessed at the end of two weeks.

Call the office for appointments. A new flyer is being developed.



Special Education Advisory Committee SEAC 20-08

Virtual MS Teams

Thursday, April 22, 2021 – 6:00 p.m.

2. Mental Health week is May 3-7; the Brantford staff have partnered with the Haldimand Norfolk branch. Stay tuned to Woodview's social media and watch for virtual events.

I-1 Correspondence W. Rose

(a) None. W. Rose

J-1 Future Agenda Items and SEAC Committee Planning W. Rose

(a) SEAC Goal Setting W. Rose
None.

K-1 Next Meeting W. Rose

(a) Thursday, May 20, 2021 | MS Teams

L-1 Adjournment W. Rose

Moved by: K. Jones

Seconded By: M. Gatopoulos

"**THAT** the SEAC 20-08 meeting of April 22, 2021 meeting be adjourned at 8:02 p.m."

CARRIED



Special Education

A Grand Erie Program

SPECIAL EDUCATION PLAN 2020-21

TABLE OF CONTENTS

Standard 1.	The Board's Consultation Process.....	1
Standard 2.	The Board's General Model for Special Education	5
Standard 3.	Roles and Responsibilities.....	10
Standard 4.	Early Identification Procedures and Intervention Strategies	13
Standard 5.	The IPRC Process and Appeals	20
Standard 6.	Educational and Other Assessments	23
Standard 7.	Specialized Health Support Services in School Settings.....	28
Standard 8.	Categories and Definitions of Exceptionalities.....	33
Standard 9.	Special Education Placements Provided by the Board	40
Standard 10.	Individual Education Plans	49
Standard 11.	Provincial and Demonstration Schools in Ontario.....	52
Standard 12.	Special Education Staff.....	57
Standard 13.	Staff Development	59
Standard 14.	Equipment	66
Standard 15.	Accessibility of School Buildings	69
Standard 16.	Transportation	71
Standard 17.	Special Education Advisory Committee	73
Standard 18.	Coordination of Services with other Ministries/Agencies	78
Standard 19.	Submission and Availability of the Plan.....	81
Appendices.....		83

Standard 1: THE BOARD'S CONSULTATION PROCESS

The purpose of this standard is to provide details of the Board's consultation process to the Ministry and to the public.

The Grand Erie District School Board values collaboration with families and community members.

Consultation with the Special Education Advisory Committee

To meet Regulation 464/97, the Grand Erie District School Board has ensured that its Special Education Advisory Committee has participated in the Board's Annual Review, under Regulation 306 of the Revised Regulations of Ontario (1990), of its Special Education Plan. Involvement has included:

- ongoing discussion at SEAC meetings throughout the 2020-21 school year;
- opportunity for input through an online survey link on Grand Erie's website;
- invitation to attend Board's budget meeting dealing with special education budgets;
- opportunity to meet with the Board's Manager of Business Services, to ask questions and receive clarification regarding Special Education budgets;
- first draft of the Plan was received by SEAC on April 22, 2021; the final draft was received on May 20, 2021.

Descriptions of any majority or minority reports received from members of SEAC concerning the Board's approved plan are as follows:

- None Received

On May 20, 2021 the Special Education Advisory Committee passed the following motion: "THAT the Special Education Advisory Committee recommend the Grand Erie District School Board approve the 2020-21 Special Education Plan, dated July 31, 2021.

The motion was carried.

Public Consultation

Overview information about the Special Education Plan and a link to the Special Education Plan were promoted on the Grand Erie website throughout the school year. A survey inviting public consultation about the plan was available through the summer of 2020 and from March until summer 2021. A link to the survey pops up whenever someone opens the Special Education Plan – it invites readers to fill out the survey after reading the Plan.

As a result of the Board's consultation with the community, Survey questions and responses are summarized below:

School (optional):

- Major Ballachey
- Bloomsburg
- Anonymous
- James L Mitchener
- Thompson Creek
- Russell Reid
- Paris District High School

- Russell Reid
- Walter Gretzky

2.What are the strengths of the special education plan?

- It is good for students with special education and behavioural needs; not so good for kids who fall in the grey zone
- Communication
- IEP consultation and review
- Learning is geared to individual student needs
- The ME program at Paris District High School is good but should be offered all day; students with disabilities shouldn't be forced into mainstream classes
- Education is geared to the student
- Comfortable learning from home (referring to virtual learning)

3.What is still needed in the special education plan?

- Needs more focus on special needs students who do not have Autism
- Issues around student with Autism having to wear a mask
-
- Music therapy needs to be included in the Plan
- Need to welcome parental input to revise the IEP at any time rather than set dates; important changes must be made in a timely fashion
- More in class help is needed
- More full-time special education classes
- Virtual learning needs to be more interactive

4.Does this plan help? Why or why not?

-
-

5.How might we best deliver services while being mindful of budget limitations?

- I don't know. I don't know your budget.
- Don't make students with Autism wear masks
- Keeping kids safe is key
- IEPs must be monitored to ensure implementation is occurring
- School boards were given additional money. Spend it on additional in-class help for students.
- Provide information about schools that have better full-time programming for students with developmental disabilities
- Budget cutbacks hurt the success of our students

Submit

Implementation of a renewed model of special education supports and services continued in the 2020-21 school year. In the renewed model:

- There was a focus on fulsome implementation of Tier 1, in-classroom or close-to-the classroom strategies and supports
- Learning Resource Teachers took on a lead role of supporting the knowledge and instructional capacity of all educators in the school in the area of Special Education
- The classroom teachers designed and implemented the student's program with the support of the Learning Resource Teacher, in the classroom
- In School Team processes were continued in all schools

- Dedicated multi-disciplinary teams were provided schools to attend resource team meetings
- Continued focus on the role of the Educational Assistant- goals for independence for students, how the EA is adding value to teacher programming

Further training for Learning Resource Teachers on the renewed model was significantly impacted by COVID-19 and virtual learning.

Grand Erie's Achievement Plan – Success for Every Student

The focus in the area of special services is how system staff support school staff to promote student learning and achievement.

1. How the special education system team guides and supports schools to learn about and implement effective differentiated instruction and assessment;
2. How wrap around supports to address a variety of student need that go beyond solely academic need are provided to students in order to decrease barriers to well-being and achievement.

Internal and External Reviews of Existing Special Education Programs and Services

There were no formal internal and external reviews of existing special education programs and services.

However, as a result of consultations with and input from Grand Erie's SEAC, school administrators and senior administration, the following changes to special education programs and service delivery will occur in the 2021-22 school year:

Mental Health Strategy

Developed a 2019-2020 Action Plan of priorities, key activities and indicators of success.

Held a meeting during the school year with the Grand Erie Mental Health Advisory Committee.

Attended Child & Youth Planning meetings with community agencies.

With the move to distance learning, met regularly with the Directors of REACH and Woodview Child & Youth Mental Health Services to ensure regular and up-to-date communication.

Provided students with opportunities for sequenced and grade-appropriate social-emotional learning.

- Collaborated with classroom teachers and Learning Resource Teachers in the delivery of programs and curriculum related to social-emotional learning, self-regulation, healthy relationships and mental health promotion and prevention.
- For the 2019-2020 school year, 90% of elementary schools received grade-appropriate social-emotional, self-regulation and/or healthy relationships programs.
- For the 2019-2020 school year, 50% of secondary schools received social-emotional and/or healthy relationships programs.
- During the spring of 2020, Child and Youth Workers (CYWs) created 10 weekly calendars that promoted self-care and self-regulation
- CYWs were part of In-School Teams, where they provided advice, education and resources on social-emotional learning, self-regulation, healthy relationships and mental health awareness.

Supported the use of effective crisis response and suicide prevention protocols.

- The Suicide Risk Protocol was reviewed at Resource Team Meetings, and SafeTALK training was delivered to elementary Learning Resource Teachers.
- Through staff meeting and consultations, Social Workers (SW) consistently used the Grand Erie Safety Plan, assessment and tracking form.
- Where appropriate, SWs completed referrals to Mental Health & Addiction Nurses.
- CYWs and SWs supported traumatic events and completed Violent Threat Risk Assessments
- As part of moving into distance learning, SWs began Wellness Checks in the spring of 2020.
- Wellness Checks by Social Workers were continued during the months of July and August and were made available to students attending summer camp and Camp Sail.
- 30 elementary and 17 secondary students received Wellness Checks during the summer of 2020.

Supported the creation of resources for mental health promotion and prevention.

- Conquering Stress resources were made available in digital and binder format.
- Developed a bank of evidence-informed and/or evidence-based programs for delivery in classrooms.
- Worked with Safe Schools in the delivery of bullying prevention and healthy relationship programs and resources.

Equipped and built capacity of school mental health professionals.

- Trained staff in evidence-based structured psychotherapy (Brief Interventions for School Counsellors Cognitive Behavioural Therapy and Virtual Counselling) to ensure effective counselling for students.
- Trained staff in trauma-informed care and practices, and Shanker & Hopkins Self-Reg training.

Established and maintained access to, through and from mental health agencies and hospital services.

- Maintained SO108 Partnerships.
- Attended regular meetings with community mental health agencies, Health Unit and McMaster Hospital.
- Managed and monitored Mental Health & Addictions Nurses referrals.

The following principles guide the implementation of the Child and Youth Mental Health Strategy in Grand Erie:

1. Achievement is fundamentally connected with student mental health and well-being.
2. Safe and inclusive school cultures will allow students to flourish.
3. Engagement among students, parents, staff and community is essential.
4. Commitment to ongoing learning for all is critical.
5. Evidence-based/informed practices will guide interventions to support students' mental health and well-being.
6. Align and coordinate efforts with community partners to maximize efficiency of resources and strengthen outcomes for students.
7. The unique strengths and needs of each school community will be honoured to ensure support is flexible and responsive.

Standard 2: THE BOARD'S GENERAL MODEL FOR SPECIAL EDUCATION

The purpose of this standard is to provide the ministry and the public with information on the Board's philosophy and service delivery model for the provision of special education programs and services.

The Special Education Plan of Grand Erie has been designed to comply with the Canadian Charter of Rights and Freedoms, the Ontario Human Rights Code, the Education Act and Regulations made under the Act, the Accessibility for Ontarians with Disabilities Act (AODA), and any other relevant legislation.

Vision for Special Education

Special Education Services and Programs in Grand Erie are consistent with the Board's mission "Success for Every Student" and are provided to allow every student to benefit from the public education system. Special Education Programs are delivered in the most enabling environment permitting the students the greatest access to their full potential. Schools and the parents/guardians work with resource staff and other involved agencies, using all available information, to develop an understanding of each child's strengths and needs to program in the most appropriate manner.

In Grand Erie the goal is to provide an inclusive environment for students in whatever classroom and school they are educated. "Inclusion is a way of thinking, a way of being, and a way of making decisions about helping everyone belong." (Causton-Theoharis, Julie N. The Golden Rule of Providing Support in Inclusive Classrooms: Support Others as You Would Wish to Be Supported - Teaching Exceptional Children, Vol. 42, No. 2, pp. 36-43. Copyright 2009, CEC). In inclusive classrooms, the principles of universal design for learning and differentiated instruction and assessment are implemented. Special education programs and services within Grand Erie are guided by the following eight principles, which are included in board policy P1-Special Education Guiding Principles:

1. All students can succeed. Success looks different for different students.
2. Education is differentiated for students, and provided for students in the whole class, in groups, and very rarely on a one-to-one basis.
3. Students learn differently and have different educational goals. Educators respond to these differences when planning and delivering programs.
4. The goal for all schools is to create environments that consider and include the learning and well-being needs of all students.
5. Resources are provided to support students to become as independent as possible in reaching their educational goals.
6. The classroom educators are the primary support for all students in school. Human resource supports such as learning resource teachers, educational assistants and other support staff work as partners with the classroom educators by coaching, co-teaching and co-learning in order to address the strengths and needs of the students.
7. Students are educated in their community schools if this is the most enabling environment for their learning. Self-contained classroom placements are available if regular class placement cannot meet the needs of students.
8. Fairness is not sameness. Students are provided with resources and supports that will assist them to become independent in reaching their educational goals.

https://granderie.ca/application/files/6315/0102/0454/P1_Special_Education_Guiding_Principles.pdf

Special Education Delivery of Supports and Services

Grand Erie's special education delivery of supports and services includes a continuum of Special Education programs and services. Programs and services provided are based upon the needs of the student. The continuum includes:

- Regular classroom with support, differentiated instruction and assessment and accommodations and/or modifications. The curriculum, method of presentation, instructional strategies and/or classroom environments may be areas that are differentiated to meet student strength and needs.
- Self-contained special education classrooms. Educational programs and services are provided for part (partially integrated) or all (fully self-contained) of the school day in the self-contained classroom setting.
- Wrap-around supports and services.

Accessing Special Services

Students may demonstrate educational strengths and needs in a variety of ways. Educator observation and parent/guardian input are the most common sources through which the individual learning profile of a student is first identified. When a student strength or need is identified it can be addressed at team meetings, where support services can be offered if appropriate.

School Team

School team plays a significant role in helping classroom educators address difficulties that a student may be experiencing in the classroom prior to, and following, formal assessment and identification. (Appendix B)

When a student demonstrates different leaning strengths and needs, the teacher works with the parent/guardian and tries a variety of strategies and approaches with the student. The teacher uses available diagnostic tools to assess the student and may discuss the situation with ***School Team***. Membership on the ***School Team*** includes the Principal (or designate), the Learning Resource Teacher (LRT) and the referring teacher(s) and may include other school staff. The school-based Child and Youth Worker and the school Social Worker may also be a member of the ***School Team***. The parent/guardian must be made aware that their child will be discussed at School Team and consent to their child being discussed at School Team. The parent/guardian may be invited to attend the School Team meeting. Ongoing contact with the parent/guardian is important to develop an understanding of the child's strengths and needs.

At the ***School Team*** meeting, a review of strategies already implemented and suggestions of further Tier 1 strategies and supports will be discussed.

A record of strategies and supports discussed at the ***School Team*** is kept in the **Student Profile** available through the Learner Intervention Tracking for Excellence (LITE) system. (Appendix C). Referral to the ***Resource Team*** occurs when the ***School Team*** wishes to discuss additional strategies and options that move beyond Tier 1 strategies and supports.

Resource Team

Membership on the ***Resource Team*** shall include the ***School Team (other than the classroom educator unless required)***, the area Teacher Consultant-Special Education and a dedicated multi-disciplinary system support team. The multi-disciplinary system team may include psychology staff, social workers, child and youth workers, behaviour counsellors, board certified behaviour analysts, speech-language pathologists, communicative disorders assistants, and/or attendance counsellors. The parent/guardian may be invited to provide input on their child's progress or to attend the meetings. They shall be informed of the date, time, purpose and staff invited prior to the meeting, and any results of these meetings will be communicated. The ***Resource Team*** will consider additional Tier 1, 2 or 3 strategies and may recommend further assessment or other interventions. The ***Resource Team*** may recommend to the Principal referral of the student to an Identification Placement and Review Committee (IPRC).

If a formal assessment is recommended, the Principal will make the referral to the appropriate student support staff through the Learner Intervention Tracking for Excellence (LITE) system. Student Support Staff will proceed with the informed consent steps with the parent/guardian before they proceed with the case. The exception to this is referral to Attendance Counsellors, which takes place based on Ministry requirements and does not require parent/guardian consent.

Human Resource Support Services

Special education supports for students, beyond classroom educator direct intervention, is provided at the school level and at the system level.

School Level

- ***Learning Resource Teachers***

Learning Resource Teachers (LRTs) work in the school to support the programs offered to students with special needs. LRTs work collaboratively with the classroom teacher to coach, co-teach and co-learn. LRTs offer suggestions and strategies to support implementation of programs to meet the learning and well-being needs of students in the regular classroom or self-contained classroom settings. LRTs work directly with students when withdrawing them to complete diagnostic assessments. LRTs may also work as a liaison between school and home when setting up school and resource team meeting agendas. LRTs, under the direction of the school principal, are responsible for setting up school level IPRC (Identification, Placement and Review Committee) meetings.

- ***Educational Assistants***

In Grand Erie there are different types of Educational Assistant (EA) support allocated to schools.

School-based EAs are assigned to meet the safety needs (both health and behavioural) of students. EAs support the student by addressing the safety needs so that they can access their educational program. The needs of each student are described in the Individual Education Plan. EAs are assigned based on priorities in the school district and may be re-allocated at any time throughout the school year to address local pressures and priority situations.

Temporary EAs are assigned to meet the safety needs (both health and behavioural) of students new to a school or classroom. The support is temporary, allowing for a trained individual to assist at the school level, ascertaining if more permanent support is required.

System Level

- ***Program Coordinators (Curriculum, Special Education and Applied Behavioural Analysis)***
Program Coordinators may be a resource for programming for a student with individual needs. They can assist with defining differentiated strategies and evidence-based resources and/or approaches, which allow the child to continue successfully in the regular program.
- ***Teacher Consultants (Curriculum and Special Education)***
Teacher Consultants-Special Education can be a valuable resource to a school. They can offer strategies, resources, referrals to outside agency supports, and connections to other teachers who are facing similar issues. They can also assist the Principal in the formal IPRC process, if required.
- ***Special Equipment Amount (SEA) Teacher Technicians***
Special Equipment Amount (SEA) Teacher Technicians support students that require the use of SEA technology and students that are deaf or hard-of-hearing.
- ***Lead Educational Assistants***
Lead Educational Assistants are assigned to support programming for classroom teachers and educational assistants to meet the needs of specialized populations of students. Their support is generally working directly with students, but sometimes the Lead EA will support staff members through modelling and coaching supports that may best meet the needs of a student. In Grand Erie Lead Educational Assistants support students who have Specialized Equipment Amount (SEA) technology, students with Autism, and students with complex special education needs
- ***Complex Behaviour Intervention Team (CBIT)***
The CBIT becomes involved with Tier 3, specific student referrals. When a student's challenging behaviour continues to be a significant concern despite involvement of many system level supports, the CBIT may become involved. To be considered for the CBIT, the student's challenging behaviours must be frequent or intense enough to pose a safety risk to themselves, staff or other students. A student with complex needs may, or may not, have a diagnosis or be identified as an exceptional student.
- ***Student Support Services***
Assessment services, speech-language services, psychological, behavioural, and social are among the other professional services available within the Board

Student Support Services are organized to provide four types of support:

- ***Communication Services*** will identify needs and provide programming suggestions for speech, articulation, language, augmentative communication and fluency disorders. Speech-Language Pathologists and Communicative Disorders Assistants provide Speech-Language support services.
- ***Behavioural Services*** will provide prescriptive plans and programming assistance for behavioural, psychological, emotional, social and attendance issues. Behaviour Counsellors, Board Certified Behaviour Analysts and Attendance Counsellors provide behavioural support services.

- ***Psychological Services*** will do formal assessments and provide programming assistance for students with gaps between aptitude and achievement. Psychological Associates and Psychological Consultants provide psychological services support.
- ***Counselling Services*** will serve to provide counselling to students and support to the parents/guardians in times of social or emotional distress. Counselling services also provides support to teachers in evidence-based whole classroom programs that deal with self-regulation, social-emotional skills and healthy relationships. Counselling services are provided by Social Workers and evidence-based whole classroom/small-group program supports are provided by Child and Youth Workers.
- ***Outside Services***
When the programming needs of the student exceed the services available within the Board, staff may work in cooperation with families to support a referral to an outside agency. The parent/guardian has the final decision regarding any referrals to outside agencies.
- ***Physical Needs***
An accessible school in each area may be designated as the "Home School" for students with needs for extensive physical accommodations.

Standard 3: ROLES AND RESPONSIBILITIES

The purpose of the standard is to provide the public with information on roles and responsibilities in the area of Special Education.

The Ministry of Education defines roles and responsibilities in elementary and secondary education in several key areas:

- legislative and policy framework
- funding
- school system management
- programs and curriculum

It is important that all involved in Special Education understand their roles and responsibilities, which are outlined below:

The Ministry of Education

- defines, through the Education Act, regulations, and policy/program memoranda, the legal obligations of School Boards regarding the provision of Special Education Programs and Services, and prescribes the categories and definitions of exceptionality;
- ensures that School Boards provide Special Education Programs and Services for their exceptional pupils;
- establishes the funding for Special Education through the structure of the funding model. The model consists of the Foundation Grant, the Special Education Grant, and other special purpose grants;
- requires School Boards to report on their expenditures for Special Education;
- sets province-wide standards for curriculum and reporting of achievement;
- requires School Boards to maintain Special Education Plans, review them annually, and submit amendments to the Ministry;
- requires School Boards to establish Special Education Advisory Committees (SEAC's);
- establishes Special Education Tribunals to hear disputes between parent/guardians and School Boards regarding the identification and placement of exceptional pupils;
- establishes a Provincial Advisory Council on Special Education to advise the Minister of Education on matters related to Special Education Programs and Services;
- operates Provincial and Demonstration Schools for students who are deaf, blind, or deaf-blind, or who have severe learning disabilities.

The Grand Erie District School Board

- establishes School Board Policy and Practices that comply with the Education Act, regulations, and policy/program memoranda;
- monitors school compliance with the Education Act, regulations, and policy/program memoranda;
- requires staff to comply with the Education Act, regulations, and policy/program memoranda;
- provides appropriately qualified staff to provide programs and services for the exceptional pupils of the Board;
- obtains the appropriate funding and reports on the expenditures for Special Education;
- develops and maintains a Special Education Plan that is amended from time to time to meet the current needs of the exceptional pupils of the Board;
- reviews the Plan annually in accordance with Regulation 306.

- Every two years prepares and approves a report on the special education programs and special education services provided by the board and submits it to the Ministry of Education;
- provides statistical reports to the Ministry as required and as requested;
- prepares a parent/guardian guide to provide information about Special Education programs, services, and procedures;
- establishes one or more IPRC's to identify exceptional pupils and determine appropriate placements for them;
- establishes a Special Education Advisory Committee (SEAC);
- provides professional development to Special Education staff.

The Special Education Advisory Committee:

- makes recommendations to the Board with respect to any matter affecting the establishment, development, and delivery of Special Education Programs and Services for exceptional pupils of the Board;
- participates in the Board's annual review of its Special Education Plan;
- participates in the Board's annual budget process as it relates to Special Education;
- reviews the financial statements of the Board as they relate to Special Education;
- provides information to parents, as requested

The School Principal:

- carries out duties as outlined in the Education Act, regulations, and policy/ program memoranda, and through Board policies;
- communicates Ministry of Education and School Board expectations to staff;
- ensures that appropriately qualified staff are assigned to teach Special Education classes;
- communicates Board Policies and Procedures about Special Education to staff, students, and parent/guardians;
- ensures that the identification and placement of exceptional pupils, through an IPRC, is done according to the procedures outlined in the Education Act, regulations, and Board policies;
- consults with the parent/guardian and with School Board staff to determine the most appropriate program for exceptional pupils;
- ensures the development, implementation, and review of a student's IEP, including a transition plan, according to provincial requirements;
- ensures that the parent/guardian is consulted in the development of their child's IEP and that they are provided with a copy of the IEP;
- ensures the delivery of the program as set out in the IEP;
- ensures that appropriate assessments are requested, if necessary, and that parent/guardian consent is obtained.

The Teacher:

- carries out duties as outlined in the Education Act, regulations, and policy/ program memoranda;
- follows Board Policies and Procedures regarding Special Education;
- maintains up-to-date knowledge of Special Education practices;
- works with Special Education staff and the parent/guardian to develop the IEP for an exceptional pupil;
- provides the program for the exceptional pupil in the regular class, as outlined in the IEP;
- communicates the student's progress to the parent/guardian;
- in consultation with the parent/guardian, works with other School Board staff to review and update the student's IEP.

The Special Education Teacher, in addition to the responsibilities listed above under “The Teacher”:

- holds qualifications, in accordance with Regulation 298, to teach Special Education;
- monitors the student’s progress with reference to the IEP and modifies the program as necessary, in collaboration with the classroom teacher;
- assists in providing educational assessments for exceptional pupils.

The Parent/Guardian:

- becomes familiar with and informed about Board Policies and Procedures in areas that affect their child;
- participates in IPRC’s, parent/guardian-teacher conferences, and other relevant school activities;
- participates in the development of the IEP;
- becomes acquainted with the school staff working with the student;
- supports the student at home;
- works with the School Principal and teachers to solve problems;
- is responsible for the student’s attendance at school.

The Student:

- complies with the requirements as outlined in the Education Act, regulations, and policy/program memoranda;
- complies with Board Policies and Procedures;
- participates in the IPRC, the parent-teacher conferences, and other activities, as appropriate.

Standard 4: EARLY IDENTIFICATION PROCEDURES AND INTERVENTION STRATEGIES

The purpose of the standard is to provide details of the Board's early identification procedures and intervention strategies to the ministry and the public.

Grand Erie strongly supports an early identification and intervention process for students with special education needs. For students in kindergarten or the early primary grades, early identification usually refers to the recognition of particular strengths, abilities, and needs, rather than a **formal** identification process through an Identification, Placement, and Review Committee (IPRC), although identification can happen at any age. Early identification and intervention includes assessment, monitoring, instruction, intervention, and community support as needed. Many of the early identification steps will be taken for all students – some specific interventions will be required for individual students as learning needs are noted. The purpose of early identification is to determine each child's strengths and learning needs. Movement toward an IPRC and formal identification is dependent upon sufficient time at school to first track the success/lack of success with attempted interventions and determine if an educational identification is required.

Grand Erie complies with the *Ministry Policy/Program Memorandum # 11 (1982)* which states: These procedures are part of a continuous assessment and program planning process which should be initiated when a child is first enrolled in school or no later than the beginning of a program of studies immediately following Kindergarten and should continue, ongoing, throughout a child's school life for students at all ability levels.

Guiding Principles that are critical to the success of the entry-to-school planning process:

- A Focus on the Whole Child and the Family
- Collaboration
- Sensitivity to Diversity
- Clear Definitions
- Responsiveness (Planning Entry to School: *A Resource Guide* Ministry of Education 2005)

The Role of the Educator Team (teacher and designated early child educator)	The Role of the Parent/Guardian
<ul style="list-style-type: none">• To lead a Spring Information session for the parents/guardians of children who will enter Kindergarten in the Fall	<ul style="list-style-type: none">• To attend a Spring Information session for the child who will enter Kindergarten in the Fall
<ul style="list-style-type: none">• To invite children to participate in a Spring orientation visit	<ul style="list-style-type: none">• To ensure the child participates in a Spring orientation visit
<ul style="list-style-type: none">• To attend an information sharing case conference with parents and community partners in late Spring, as needed• To review and store community agency reports highlighting student strengths and needs, if one is shared	<ul style="list-style-type: none">• To attend an information sharing case conference if requested
<ul style="list-style-type: none">• To collect significant information that will help the educator team get to know and understand the child• To listen to the parent/guardian share information about their child	<ul style="list-style-type: none">• To provide information that will help the teacher get to know the child, which may include permission for the release of information from outside community agencies

The Role of the Educator Team (cont.) (teacher and designated early child educator)	The Role of the Parent/Guardian (cont.)
<ul style="list-style-type: none"> To provide the parent/guardian with the <i>Kindergarten Home Connection Form</i> (Appendix D) for completion 	<ul style="list-style-type: none"> To complete the <i>Kindergarten Home Connection Form</i> (Appendix D)
<ul style="list-style-type: none"> To monitor student development, learning abilities, and needs while collecting evidence of learning over time to demonstrate achievement of expectations 	<ul style="list-style-type: none"> To dialogue with the teacher on student development, learning abilities, and needs
<ul style="list-style-type: none"> To “provide parents with an overview of initial observations of their child’s learning in relation to the overall expectations in the Kindergarten Program with information about appropriate next steps to further the child’s learning” (Growing Success, Kindergarten Addendum, pg. 12) To send home a Kindergarten Communication of Learning: Initial Observations mid to late November followed by parent visits where they can observe and share information To complete a written anecdotal Kindergarten Communication of Learning and provide it in February and June 	<ul style="list-style-type: none"> To attend the structured parent/guardian observations visit and parent interviews/student-led conferences focused on the child’s portfolio (November-December) To read the Kindergarten Communication of Learning, providing follow-up where needed
<ul style="list-style-type: none"> To implement strategies of intervention and work with all support personnel as needed to address observed needs of the child 	<ul style="list-style-type: none"> To dialogue with the teacher on student development, learning abilities, and needs
<ul style="list-style-type: none"> To communicate with parents any concerns as they arise, with suggestions about appropriate resources and personnel for support as needed Refer to School Team observed needs of the child for speech and language, cognitive and behavioural assessments, occupational, and/or physiotherapy 	<ul style="list-style-type: none"> To be regularly involved in decisions about the education of their child To access available community agencies that can assist with their child’s growth and development

PLEASE NOTE: If a child enters school for the first time in Grade 1 or later, and the teacher has a concern about the child’s progress, the parent/guardian should be informed, and the teacher utilizes strategies to resolve the concern. If concern remains refer to School Team Process. (Appendix B)

Parents play an important role in their children’s learning. Studies show that children perform better in school if their parents are involved in their education. By becoming familiar with the Kindergarten program, parents can better appreciate the value of play-based learning and learn about the attitudes, skills, and strategies that their children are developing. This awareness will enhance parents’ ability to discuss their children’s learning with them, to communicate with educators, and to ask relevant questions about their children’s development. Knowledge of the program will also help parents understand their children’s growth in learning and will enhance their ability to work with educators to improve their children’s learning and development. (The Kindergarten Program 2016.)

Early and Ongoing Identification and Intervention Process for Referring a Student for an Assessment

Classroom Teacher's first steps:

- Complete an OSR search – Complete a Student Profile documenting background and attempted strategies
- Inform parent about any concerns regarding child's progress
- Attempt remedial strategies (Class Act, Sound Bites, Lexia, etc.)
- Consult with previous classroom teachers, LRT, administrator and parent/guardian
- Provide on-going assessment within the classroom: work samples, portfolios, teacher-made tests, running records, observations, Brigance, DRA, Benchmark Reading Assessment, Kindergarten Cumulative Assessment Portfolio (KSCAP)

The parent/guardian will be informed of the School Team process and opportunities to be involved. (Appendix B). With verbal parental consent, the School Team (classroom teacher, LRT, administrator, Child and Youth Worker) meet to discuss student's strengths and needs, while determining next steps. Parent/guardian will be informed of the next steps and recommendations from the School Team. School Team process may be repeated if concern is unresolved.

School Team determines that appropriate strategies are in place. The teacher will inform parents about the results of the meeting and will continue to monitor progress in the classroom.

School Team recommends additional strategies and determines that on-going monitoring is required. The teacher will inform parents about the results of the meeting. The School Team may reconvene at a later date to further discuss next steps.

School Team determines that further assessment and intervention is required. A timeline for the next steps is established, with follow up plan. Inform parents/guardians of next steps for consent.

Possible next steps may include, some or all of these assessments, with informed and/or written consent from the parent/guardian;

- LRT may complete an Academic Achievement Battery (AAB), or another educational assessment to provide recommendations and strategies to be implemented by school personnel
- A referral to the family physician may be suggested to identify physiological factors interfering with learning.
- Parents may wish to undertake private assessments (eg. psychologist, speech).

When all in-school supports have been exhausted, the parent/guardian is informed that their child is being referred to the Resource Team, with parent/guardian consent. Upon referral to the Resource Team (see Appendix B), additional assessments may be required or advisable.

Possible next steps from the Resource Team may occur, with informed and/or written consent from the parent/guardian;

- Make recommendations for programs or services and establish a date to review progress
- A Psycho-Educational assessment by qualified personnel
- Professionals such as Occupational or Physical therapy
- Psychologist or Speech Language Pathologist may complete an assessment and share recommendations for programming, resources or services.

The student may be referred to an IPRC (see Appendix E), depending on the recommendations of the Resource Team and discussions with the parent/guardian. Parents may also request an IPRC independently. Continued assessment may be required.

Procedures used within Grand Erie DSB for referring a student for an assessment

- At various steps in the School Team Process, a variety of assessments, from informal to formal, requiring increased expertise in specific forms of testing may be necessary. The following may be the hierarchy of assessments a student could require, to determine programs and services that will meet his/her educational needs. At each level (other than regular classroom methods), the parent/guardian must give written consent and be informed of the outcome of the assessment.
- Assessment of a student begins with the teacher in the classroom using a variety of methods on a regular basis (such as work samples, portfolios, teacher-made tests, observations, checklists, Brigance, DRA (Diagnostic Reading Assessment), BAS (Benchmark Assessment System) to evaluate student progress.
- If the classroom teacher notices that a child is experiencing difficulty during the course of ongoing assessment which could affect his/her ability to meet the curriculum, the parent/guardian that further testing by the School's LRT may be necessary. The teacher will discuss the School Team Process with the parent/guardian.
- With informed, written parent/guardian consent, the LRT may administer the, Academic Achievement Battery (AAB), or any other educational assessment. The parent/guardian, classroom teacher and LRT will discuss the results of the assessment along with recommendations or strategies to be implemented by school personnel and the parent/guardian.
- Upon referral to the School Resource Team, a psycho-educational assessment by qualified personnel may be recommended to the parent/guardian for the child. This form of assessment may include tests of intellectual abilities, perceptual development and/or academic achievement. The parent/guardian and school personnel will be informed of the results of the assessment and recommendations.
- Results of the assessment and recommendations from the support personnel will be implemented by the classroom teacher.
- A referral to the family physician may be suggested to identify any physiological factors, which may interfere with learning.
- The child may be referred to an IPRC depending on the recommendations of the Resource Team and discussions with the parent/guardian. Further assessment by a speech-language pathologist, psychologist or outside agencies or health care

Grand Erie DSB personnel use the following types of assessment:

Educational Assessments	Psycho-educational Assessments
<ul style="list-style-type: none">• These assessments are made for learning, as learning, and of learning (Learning For All, 2013). They identify strengths and weaknesses. Recommendations and/or strategies will be a component.	<ul style="list-style-type: none">• A psycho-educational assessment may include tests of intellectual abilities, perceptual development and/or academic achievement. These tests are conducted by a Psycho-educational Consultant or Psychological Associate who are qualified to administer such tests. Psycho-educational Consultants are supervised by Psychological Associates.

<p>Test of Intellectual Abilities</p> <ul style="list-style-type: none"> These are tests that measure an individual's ability levels at a given point in time. The results of these tests are used by teachers to help students reach their maximum functioning level by identifying their strengths and weaknesses. 	<p>Tests of Perceptual Development</p> <ul style="list-style-type: none"> These are tests and/or observations that may indicate strengths/weaknesses with the processing of visual and/or auditory information.
<p>Tests of Academic Achievement</p> <ul style="list-style-type: none"> These are standardized tests which measure an individual's performance on reading, spelling and mathematics tasks. 	<p>Functional Behaviour Assessment</p> <ul style="list-style-type: none"> A process that identifies target behaviour, and behaviour function, to understand what maintains behaviour. This leads to intervention plans to teach alternative behaviours and social skills. <p><u>Behavioural Assessments:</u></p> <ul style="list-style-type: none"> These assessments measure a child's adjustment to social situations. They are conducted by qualified personnel and may involve observations or checklists.
<p>Speech-Language Assessments</p> <ul style="list-style-type: none"> Speech-Language Assessments may include tests of articulation, voice, stuttering and receptive and expressive language. These tests are conducted by Speech-Language Pathologists. <p>Speech: These tests may involve the following:</p> <ul style="list-style-type: none"> assessment of the child's ability to produce speech sounds and control the muscles and oral structures required for speech; assessment of vocal quality, pitch, loudness and resonance; assessment of stuttering. <p>Language: These tests may involve the following:</p> <ul style="list-style-type: none"> assessment of the child's understanding of oral language; assessment of the child's ability to orally express himself/herself; assessment of a child's needs for additional communication support. 	

After the Assessment

- Recommendations may be made for further assessment by other board personnel, outside agencies, or health care. The Resource Team will provide the parent/guardian with an explanation of the need for further assessment. For the School Board to release or receive information, including assessments from outside agencies, the parent/guardian must provide written authorization for the exchange of information (Appendix I - Consent for Disclosure and Collection of Information).
- The child may be referred to an Identification, Placement, and Review Committee (IPRC) meeting depending on the recommendations of the Resource Team and discussions with the parent/guardian.
- Once a child is referred to IPRC and determined to be exceptional, the recommended program will be implemented by the classroom teacher
- The parent/guardian will continue to be informed of his/her progress through consultation in the development and review of the IEP at each reporting period. In addition, the parent/guardian will receive confirmation of their child's progress at the annual IPRC.

Procedures for Providing Parent/Guardians with Notice that their Child is Being Considered for Referral to an IPRC

- Students who have behavioural, communicational, intellectual, physical, or multiple exceptionalities, may have educational needs that cannot be met through regular instructional and assessment practices. These needs may be met through accommodations, and/or an educational program that is modified below the age-appropriate grade level expectations for a particular subject or course. www.edu.gov.on.ca/eng/parents/speced.html Needs may also be best met through alternative expectations that are developed to help students acquire knowledge and skills that are not represented in the Ontario Curriculum, and can include skills areas like gross motor and life skills.
- Through ongoing involvement in the School Team Process, the parent/guardian will be aware of his/her child's strengths and needs. When recommending a referral to IPRC, the Resource Team will examine information from a variety of sources regarding the student to see if it matches Ministry definitions and Board criteria.
- The parent/guardian will be informed by the School Principal of the Resource Team's decision to refer the child to IPRC. Along with the Letter of Invitation to the IPRC, the parent/guardian will receive a copy of the *Parents' Guide to Special Education* and any information that will be presented at the meeting (Appendix E)
- Parents may also request and initiate a referral to the IPRC. According to Ontario Regulation 181/98, "Identification and Placement of Exceptional Pupils", once a child has been enrolled in school, parents have the right to request that the principal refer their child to an IPRC. The principal must refer the student to an IPRC upon receiving a written request from the parent.

Procedures for Providing Parent/Guardians with Notice that their Child is Being Considered for a Special Education Program and Related Services if the Child is *Not* Being Referred to IPRC

- All students who receive Special Education Programs and/or Services in Grand Erie may not be formally identified as exceptional. This philosophy blends with the following statement from Special Education in Ontario, Kindergarten to Grade 12: The Individual Education Plan, Ministry of Education 2017
 - *An IEP may be developed for a student who has not been identified by an IPRC as exceptional, but who has been deemed by the board to require a special education program or services in order to attend school or to achieve curriculum expectations and/or to demonstrate learning.*
 - In addition, School LRT's may work with non-identified students in the regular classroom to help them achieve the curriculum expectations. The majority of the LRT's role is to support the classroom teacher to program for and implement learning experiences for students in their classrooms, not withdrawal of students.
 - This type of support is seen as a preventative measure, allowing students to overcome difficulties and be successful in the school environment.

For the types of early intervention strategies that are used to support students prior to referral to IPRC, refer to **Accommodations** (Standard 9).

Early Intervention Supports for Students Prior to IPRC

The following agencies can be contacted for assistance determining best available supports in the community:

Contact Brant 519-758-8228 www.contactbrant.net
Haldimand Norfolk REACH 519-587-2441 or 1-800-265-8087 www.hnreach.on.ca
Lansdowne Children's Centre 519-753-3153 www.lansdownecentre.ca

In May 2007, the Ministry of Education issued PPM 140: Incorporating Methods of Applied Behaviour Analysis into Programs for Students with Autism Spectrum Disorders, which provides direction to school boards and supports their use of Applied Behaviour Analysis (ABA) as an effective instructional approach in the education of students with Autism Spectrum Disorder (ASD).

PPM 140 outlines ABA and two requirements that must be in place for students with ASD:

- School boards must offer students with ASD special education programs and services, including, where appropriate, special education programs using ABA methods;
- School board staff must plan for the transition between various activities and settings involving students with ASD.

Grand Erie employs Board Certified Behaviour Analysts, Behaviour Counsellors with ABA expertise and an ABA Coordinator to support the implementation of PPM 140. The ABA Coordinator supports the implementation of the Connections for Students transition process.

Connections for Students

The purpose of Connections for Students is to support students as they transition from IBI services within the Ontario Autism Program to applied behaviour analysis (ABA) instructional methods in a publicly funded school.

Connections is a multidisciplinary, student specific and school-based transition team that;

- Is comprised of the Principal, Parent/Guardian, classroom Teacher, ABA Coordinator and School Support Program ASD Consultant and other multidisciplinary staff, as required.
- Begin to meet 6 months prior to the student completing IBI services, and continue to meet monthly until 6 months after discharge from IBI services
- Aligns Individual Education Plans (IEPs), transition plans and behaviour/safety plans to support the student in acquiring, generalizing and maintaining their skills
- Support collaboration between the school board, regional autism provider and the family

Grand Erie DSB Students Involved in Connections during 2020-21 School Year

- To date, 2 students have been discharged from Connections this year and 1 student withdrew from our Board for homeschooling
- Currently, we have 4 students involved in Connections.

Standard 5: THE IPRC PROCESS AND APPEALS

The purpose of the standard is to provide details of the Board's Identification, Placement and Review Committee(s) (IPRC) process to the ministry and the public.

Statement of Purpose and Responsibility:

Regulation 181/98 requires that all school boards establish one or more Identification, Placement and Review Committees (IPRCs). The IPRC meets and decides if a student should be identified as an exceptional pupil and if so, the placement that will best meet the student's needs. An IPRC is composed of at least three persons, one of whom must be a principal or supervisory officer of the board, or a designate assigned to act in the place of the principal or supervisory officer. A school board trustee may not be on the IPRC.

Committee Composition

Grand Erie DSB uses three levels of Identification, Placement and Review Committees (IPRCs):

- a) School Level
- b) Area Level
- c) System Level

Level	Membership	Jurisdiction
School	<ul style="list-style-type: none">• The Principal (of the school) – Chair*• The LRT of the school• The classroom teacher or other teacher	<ul style="list-style-type: none">• review of original identification• review of original "regular class" placements• recommendation for placement in a Demonstration School for a student who is already identified as exceptional
Area	<ul style="list-style-type: none">• one Principal (from the area) - Chair**• another Principal or Vice-Principal (or designate)• a Teacher Consultant-Special Education (for the area)	<ul style="list-style-type: none">• original identification• original "regular class" placements• placements in area special classes• review of placements in area special classes• original identification and placement of complex cases
System	<ul style="list-style-type: none">• Superintendent, Principal-Leader of Special Education or designate – Chair***• The Program Coordinator for Special Education• a Teacher Consultant-Special Education (for the area)	<ul style="list-style-type: none">• original identification and placement of complex cases• placement of students in system special classes• review of placements in system special classes• referral to Provincial Schools

* The chair of the School level IPRC is the Principal of the home school. If the Principal is unable to attend, a Principal from another school and/or a Supervisory Officer must attend as a Vice-Principal can not be the sole Principal representative on an IPRC.

** The chair of the Area level IPRC is a Principal other than the Principal of the school in which the student is enrolled.

*** The chair of the System level IPRC is Superintendent or Principal-Leader Special Education or designate.

In addition to the three people that constitute an IPRC, other people may attend an IPRC meeting, including the Principal of the home school, resource people such as the student's teacher or board support staff, a parent/guardian or the student (if over 16 years of age) and/or a parent representative. The parent/guardian and, where the pupil is over 16, the pupil, are entitled to be present and participate in the discussions about the pupil and to be present when the committee's identification and placement decisions are made.

Committee Operating Procedures and Scope

The Scope for each level of IPRC is, as follows:

- a) School level IPRCs review an original identification and review an original placement if the placement was "regular class". A School level IPRC may also recommend placement of a student who is already identified as an exceptional student with a Learning Disability at a Demonstration School.
- b) Area level IPRCs determine the original identification of a student. They also determine the original "regular class" placements and placements in area special classes. Area IPRCs also review placement in area special classes. In addition, they will determine the original identification and placement of complex cases.
- c) System level IPRCs determine the placement of students in system special classes. They also review placements in system special classes. System level IPRCs also make referrals to Provincial schools and determine original identification and placement of complex cases.
 - Principals may, upon written notification to the parent/guardian, and must, at the written request of the parent/guardian, refer a student to an Identification, Placement and Review Committee (IPRC).
 - Identifications are made in accordance with Ministry policy and regulations. In order to be identified as an "exceptional pupil" a student must meet the criteria for the exceptionality and, in most circumstances, must require modifications of program.
 - School level IPRCs have one option for placement – regular class.
 - Area level and System level IPRCs have two options for placement – regular class or special class.
 - Discussions about a student's Individual Educational plan and other program options may occur at a meeting of the IPRC and this discussion should include description of the student's strengths and needs. The decision-making of the IPRC is restricted to the student's identification and placement and includes identifying the next date for a review.
 - Notification to parents/guardians and other parties about the date, time and location of the IPRC is the responsibility of the Principal of the home school and must be provided 10 days in advance of the IPRC.
 - Minutes of the IPRC will be completed by the Chair and will include a checklist indicating the decision about identification and placement. Minutes must be filed at the school in the Ontario Student Record (OSR).
 - Communication of IPRC decisions to parents/guardians and to area/central files should occur, as follows:
 - a) School Level IPRC – the home school Principal communicates in writing to the parent/guardian
 - b) Area Level IPRC – the Principal who chairs the IPRC communicates in writing to parent/guardian, and to schools,
 - c) System Level IPRC – Principal-Leader Special Education or designate communicates in writing to parent/guardian, and to schools.

Role of the Board

The Grand Erie District School board shall establish one or more committees for the Identification and Placement of exceptional students, determine the jurisdiction of each committee and establish the manner in of selecting the chair of the committee. The board shall direct administration to select individuals who meet the requirements of the members set out by the board.

The Board shall appoint three or more persons to each committee that it establishes. The board shall appoint as one of the members of each committee:

- a) a Principal employed by the board
- b) a Supervisory Officer employed by the board

The Board shall direct administration to ensure that individual membership on each IPRC meets the requirements as set out by the board.

The Board shall prepare a guide (A Parent's Guide to Special Education) for the use and information of parents and pupils that provides information concerning:

- a) the function of the IPRC and the IPRC review
- b) the procedure for identifying a student as exceptional and for deciding the student's placement
- c) the IPRC's duty to describe the strengths and needs of the student
- d) the IPRC's duty to include the student's exceptionality and the category and definition of that exceptionality in its statement of decision
- e) the function of a special education appeal board and the parent's right to appeal the decision of the IPRC to such a board
- f) the names, addresses and telephone numbers of the Provincial and Demonstration schools
- g) whether and to what extent the school board purchases special education programs from another school board
- h) a list of local parents' organizations eligible to be on a Special Education Advisory Committee (SEAC)
- i) the information that an IPRC placement decision cannot be implemented unless a parent has consented to the decision or has not filed a notice of appeal within the required time limit.

All parents shall be informed by means of an item in the school newsletter or by other appropriate means, at least once each year, of the availability of the Parent's Guide to the IPRC process. At the same time, parents shall also be informed of their right to request that their child be referred to an IPRC. (**A Parents' Guide to Special Education - Identification Placement and Review Committee** (Appendix E), also (**A Guide for Parents – Individual Education Plan (IEP)** Appendix F).

The Board shall ensure that copies of the guide are available at each school in the Board's jurisdiction and at the Board's head office and shall provide a copy to the appropriate district office of the Ministry.

Number of IPRC referrals for the school year 2020-21: numbers ready in June
Number of IPRC reviews for the school year 2020-21: numbers ready in June
Number of IPRC appeals for the school year 2020-21: numbers ready in June

Standard 6: EDUCATIONAL AND OTHER ASSESSMENTS

The purpose of the standard is to provide details of the board's assessment policies and procedures to the ministry and to make parents aware of the types of assessment tools used by the school board, the ways in which assessments are obtained by IPRCs, and the ways in which assessments are used.

Types of Assessments

Assessments are intended to assist the student by providing staff with insights into the student's strengths, needs and learning profile. Three types of assessments are conducted by personnel within Grand Erie: Educational, Psycho-educational, and Speech and Language.

Educational assessments are limited to achievement testing of individual students both by formal and informal means. Responsibility for training of staff to use these assessment tools is assumed by the Program/Student Success Team if the assessment is to be administered by classroom teachers to inform program delivery for all students and by the Special Education team when more in depth assessment to be administered by the Learning Resource Teacher is needed for a specific student. Formal measures include (but may not be limited to):

For *Classroom Teachers*:

Developmental Reading Assessment (DRA) – Primary
Benchmark Assessment System – Primary & Junior
Ontario Comprehension Assessment (OCA)
Groupe Beauchemin (GB+) – French Immersion

For *Learning Resource Teachers*:

Academic Achievement Battery (AAB)
Brigance Tests of Basic Skills
Brigance Early Development Scale

The Canadian Cognitive Abilities Test (CCAT 7) is administered in grade 3. It is used as a tool to help classroom teachers better understand the learning profile of their Grade 3 students and to inform program development for all students based on their profile of learning strengths and needs. This assessment tool may also assist to flag students who may be in need of further assessment to understand their learning needs, and as a screening tool to inform whether an individual student may require additional supports in the area of Enriched or Gifted Learning.

Psychological measures are used by Psychological Associates and Psycho-Educational Consultants. All are administered individually to students after informed consent from parents/guardians has been obtained. They can be subdivided into various types. Among the most frequently used tests are the following:

(a) *Global Cognitive/Intellectual measures*:

Wechsler Intelligence Scale for Children – Fifth Edition (WISC V) (Canadian norms)
Wechsler Adult Intelligence Scale – Fourth Edition (WAIS-IV) (Canadian norms)
Wechsler Preschool and Primary Scale of Intelligence – Fourth Edition (WPPSI-IV) (Canadian norms)
Stanford-Binet Intelligence Scale – Fifth Edition (SB5)
Wechsler Nonverbal Scale of Ability (Canadian norms)
Ravens 2 Progressive Matrices

(b) ***Academic Achievement Measures***

Kaufman Test of Individual Achievement – Third Edition (Canadian norms)
Wechsler Individual Achievement Test – Third Edition (Canadian norms)

(c) ***Processing and Specific Skills Tests:***

Bender Visual-Motor Gestalt Test – Second Edition
Beery Buktenica Developmental Test of Visual-Motor Integration – Sixth Edition (VMI-6)
Beery VMI Developmental Test of Visual Perception – Sixth Edition
Beery VMI Developmental Test of Motor Coordination – Sixth Edition
California Verbal Learning Test – Children (CVLT-C)
Children's Colour Trails Test
Comprehensive Test of Phonological Processing – Second Edition (CTOPP-2)
Delis-Kaplan Executive Function System (DKEFS)
NEPSY-A Developmental Neuropsychological Assessment – Second Edition
Peabody Picture Vocabulary Test: Fifth Edition (Forms A & B) (PPVT)
Process Assessment of Learning – Second Edition (Language and Math) (PAL-II)
Rey Complex Figure Test (RCFT)
Test of Memory and Learning – Second Edition (TOMAL-2)

(d) ***Surveys and Checklists:***

Adaptive Behaviour Assessment System – Third Edition (various forms) (ABAS-3)
Beck Depression Inventory – Second Edition (BDI-2)
Behaviour Assessment Scale for Children – Third Edition (various forms) (BASC-III)
Behavior Rating Inventory of Executive Function – Second Edition (BRIEF2)
Brown Executive Function/Attention Scales (various forms)
Childhood Autism Rating Scale – Second Edition (CARS-2)
Gillam Autism Rating Scale – Second Edition (GARS-2)
Multi-dimensional Anxiety Scale for Children: Second Edition (MASC-II)
Piers-Harris Children's Self-Concept Scale – Second Edition

Speech-Language assessments are completed by Speech-Language Pathologists. Formal measures used to evaluate speech (articulation/phonology, fluency, resonance, voice) and oral language (receptive and expressive, vocabulary, phonological awareness, social/pragmatic language) include:

(a) ***Speech/Phonological Processes:***

Fletcher Time-By-Count Test of Diadochokinetic Syllable Rate
Goldman Fristoe Test of Articulation – 3 (GFTA-3)
Kaufman Speech Praxis Test (KSPT)
Structured Photographic Test of Articulation –D: III (SPAT-D:3)
Stuttering Severity Instrument - 4

(b) ***Language:***

Bankson Language Test – 2 Screen (BLT-2S)
Clinical Evaluation of Language Fundamentals – Fifth Edition (CELF-5)
Clinical Evaluation of Language Fundamentals – Primary (Third Edition)
Clinical Evaluation of Language Fundamentals, Fifth Edition Metalinguistics
Expressive One Word Picture Vocabulary Test - 3
Language Processing Test – 3 (LPT-3)

Montgomery Assessment of Vocabulary Acquisition (MAVA)
Peabody Picture Vocabulary Test –Fifth Edition (Forms A & B)
Preschool Language Scale – 5 (PLS-5)
Rapid Automatized Naming/Rapid Alternating Stimulus Tests (RAN/RAS)
Social Language Development Test – Elementary (SLDT-E NU)
Structured Photographic Expressive Language Test – 3 (SPELT-3)
Structured Photographic Expressive Language Test – Preschool Second Edition (SPELT-P2)
Test of Aided Communication Symbol Performance (TASP)
Test of Narrative Language - 2 (TNL-2)
Test of Problem Solving – Third Edition (TOPS-3)
Test of Problem Solving 2 - Adolescents
Test of Word Finding – 3 (TWF-3)
The Listening Comprehension Test – 2 (LCT-2)
The Word Test – 3: Elementary
The Word Test – 3: Adolescent
Wiig Test of Basic Concepts (WABC)

(c) ***Phonological/Phonemic Awareness***

Emerging Literacy Language Assessment (ELLA)
Pre-Reading Inventory of Phonological Awareness (PIPA)
Profile of Phonological Awareness (PROPA)

(d) ***Motor Speech***

Dynamic Evaluation of Motor Speech Skills (DEMSS)
Informal Tool for Early Motor Speech (ITEMS)

Qualifications of Staff

Educational assessments are conducted by teachers who are governed by the Education Act, and regulated by the College of Teachers (www.oct.ca)

Psychological *et al.* assessments are administered by psychologists, psychological associates and psycho-educational consultants. Psychologists/psychological associates and those they supervise are governed by the Regulated Health Professions Act, 1991. Only psychologists/psychological associates provide and communicate diagnoses. Psychologists and Psychological Associates are members of the College of Psychologists of Ontario (www.cpo.on.ca).

Speech-Language assessments are administered by Speech-Language Pathologists who are also governed by the Regulated Health Professions Act, 1991 and belong to the College of Audiologists and Speech Language Pathologists of Ontario (www.caslpo.com).

Referrals Management and Wait Times

Individual assessments are completed to support educational program planning. Referrals for assessment are considered and prioritized through the Resource Team process. Meetings are held at least every six weeks with an agenda determined by the School Team which has already accessed expertise within the school building including a review of classroom based assessment information, standardized educational assessment (AAB), participation in intensive early literacy intervention programs if appropriate, and the thorough implementation of Tier 1 strategies. Resource Team (RT) discussion includes programming to support educational (academic and well-being) needs based on available information, and recommendations for medical assessment such

as hearing/vision if required. If a referral for further assessment is not deemed to be necessary at the time of the Resource Team meeting but careful monitoring of progress to reconsider this decision in the future is, an intervention plan and timelines to bring back to the RT are developed and left with the School Team for implementation. Prioritizing of referrals takes into account:

- severity of needs
- request for outside agency involvement
- school setting of priorities
- school referral patterns relative to the severity of needs across the district

Referrals for assessment are logged centrally using the Learner Intervention for Tracking Excellence (LITE) process.

Wait times for psycho-educational assessments are generally 1 – 6 months. This reflects the time between the date a referral is made in LITE after a Resource Team meeting to the date of the parent/guardian meeting when the written report of assessment findings and recommendations is shared.

Wait times for speech-language assessments range from 1 to 13 months. In addition to Resource Team referrals, Communication Services staff meet with Kindergarten Educator Teams during the first 6 weeks of school to help determine children most in need of specialized support. Using a tiered intervention framework, the service delivery approach is developed based on student and school needs. For example, some schools might receive a block or even several blocks of service while others, based on comparative need, might not receive any blocks of direct intervention, but will have service delivered in a less intensive approach (i.e., Home Programming, classroom strategies to develop skills). All Kindergarten Educator Teams receive speech-language services support, to implement the Sound Bites Phonological Awareness Program (<https://sway.office.com/s12G1zX3yBWx5cG6>).

All direct interventions with students are conducted only with written parent/guardian consent which typically includes individual discussions with the parent/guardian to ensure that the consent is informed and voluntary. Limits of confidentiality, privacy of information, likely use of the assessment information, and distribution of the report are also discussed. Students 18 years of age or older, provide their own consent.

Results of individual Educational/Psycho-educational/Speech-Language assessments are communicated through a meeting or telephone call with the parent/guardian and a written copy of the assessment report is provided. Meeting face-to-face so that assessment findings and recommendations can be used to collaboratively determine next steps in program planning is preferred. The COVID context has required that meetings with parents take place on the telephone or through Microsoft Teams. Student participation in these discussions is determined in consultation with their parent/guardian, taking into account developmental constraints.

Appropriate school staff are involved when assessment results are reviewed with the parent/guardian. Reports prepared by professionals outside the Board are reviewed to determine what information provided helps delineate a student's learning needs, strengths or problems and how it can be used for the improvement of instruction within a school context and in accordance with the *Education Act*, (R.S.O. 1990, S.226(2)). Where this information differs from data collected at the school, the Resource Team will determine how best to proceed. There is no requirement that assessments or reassessments must be conducted by Board personnel (i.e. reports are

"transportable"). Allocation of educational resources and educational programming decisions remain the responsibility of school/system staff.

Protection of Privacy and Consent for Sharing Information

Privacy of Information is protected under the *Municipal Freedom of Information and Protection of Privacy Act (MFIPPA)* and the *Personal Health Information Protection Act (PHIPA)*. Assessment reports are filed in the student's Ontario Student Record (OSR) folder. The original report is housed in a confidential Psychology or Speech-Language Record which is maintained for 10 years after the date of last contact or 10 years after the child turns 18 years of age in accordance with the Regulation Health Professions Act (RHPA).

Written authorization from the parent/guardian or student over 18 years of age is obtained prior to releasing reports to outside agencies.

Standard 7: SPECIALIZED HEALTH SUPPORT SERVICES IN SCHOOL SETTINGS

The purpose of the standard is to provide details of the Board's specialized health support services to the ministry and the public.

Ministry of Education Policy/Program Memorandum No. 81 – Provision of Health Support Services in School Settings provides direction about the delivery of services that go beyond educational services and are not part of normal preventative health programs already provided by boards of health to school children.

Policy/Program Memorandum No. 161 – Supporting Children and Students with Prevalent Medical Conditions (Anaphylaxis, Asthma, Diabetes, Epilepsy) in Schools must have policies and procedures in place to support students with prevalent medical conditions. For students to fully participate in the learning environment and achieve success, the Grand Erie District School Board, the Home and Community Care Support Service of Hamilton, Niagara, Haldimand & Brant (HNHB), the Southwest LHIN and the Lansdowne Children's Centre who manages the School Based Rehabilitation Services (SBRS) program share responsibility for these specialized health support services.

Further information regarding specialized health support services in Grand Erie can be found in the following documents:

Board Policy SO8 – Community Partnerships

Board Policy SO28 – Student Concussion and Head Injury

Board Policy SO30 – Management of Potentially Life Threatening Health Conditions, Including Administration of Medication, in Schools

Board Procedure SO108 – Community Service Providers and Schools Working Together

Key abbreviations used within the document:

LCC – Lansdowne Children's Centre

LHIN – Local Health Integration Network

OT – Occupational Therapist

PT – Physiotherapist

PSL – Preschool Speech and Language

RN – Registered Nurse

SBRS – School Based Rehabilitation Services

SHSS – School Health Support Services

SLP – Speech and Language Pathologist

Specialized Health Support Service	Agency or position of person who performs the service (e.g.: LHIN board, staff, parent, student)	Eligibility criteria for students to receive the service	Position of person who determines eligibility to receive the service and the level of support	Criteria for determining when the service is no longer required	Procedures for resolving disputes about eligibility and level of support (if available)
Occupational Therapy	SBRS program managed through LCC	Meets criteria for assessment established by SBRS Occupational Therapy (OT) assessment indicating if OT services are required	SBRS clinician based upon established criteria	Criteria determined by SBRS SBRS OT indicates when occupational therapy services are no longer required	Discussion with SBRS Manager.
Physiotherapy	SBRS program managed through LCC	Meets criteria for assessment established by SBRS Physiotherapy (PT) assessment indicating if PT services are required	SBRS clinician based upon established criteria	Criteria determined by SBRS SBRS PT indicates when physiotherapy services are no longer required	Discussion with SBRS Manager
Speech & Language Therapy	SBRS program managed through LCC Grand Erie Brant Haldimand Norfolk Preschool Speech and Language (BHNPSL) managed through LCC	Meets criteria for assessment established by SBRS Speech-Language Pathologist (SLP) assessment indicating if SBRS Speech services are required	SBRS clinician based upon established criteria SLP based on assessment results PSL clinician based upon established criteria	Criteria determined by SBRS SBRS SLP indicates when intervention no longer required Transfer from PSL based on age and need	Discussion with SBRS Manager School Team meeting with parent/guardian and student if appropriate or required by legislation and SLP report

Specialized Health Support Service	Agency or position of person who performs the service (e.g.: LHIN, board, staff, parent, student)	Eligibility criteria for students to receive the service	Position of person who determines eligibility to receive the service and the level of support	Criteria for determining when the service is no longer required	Procedures for resolving disputes about eligibility and level of support (if available)
Nursing	LHIN (SHSS) and HHNB	Medical assessment indicating that nursing must be provided during school hours	LHIN/HNHB Care Coordinator	Medical assessment indicating nursing no longer required during school hours OR Parent/guardian assumes responsibility	School or parent/guardian can request case conference with LHIN/HNHB Care Coordinator
Administering of prescribed medications	Oral medication by school staff. G-tube and Intra-muscular medications by LHIN (SHSS)/HNHB Student (if appropriate) **Note school staff are not authorized to administer injections; therefore, requests made in relationship to school staff administering injections shall be denied	Medical Statement OR Authorization of parent/guardian for medication to be administered at school except for administration of medicinal cannabis, which requires a Medical Statement	School Principal LHIN/HNHB Care Coordinator	Medical recommendation indicating that prescribed medication no longer needs to be administered during school hours OR Student has learned to administer medications independently	School or parent/guardian can request a case conference with LHIN/HNHB Care Coordinator

Specialized Health Support Service	Agency or position of person who performs the service (e.g.: LHIN, board, staff, parent, student)	Eligibility criteria for students to receive the service	Position of person who determines eligibility to receive the service and the level of support	Criteria for determining when the service is no longer required	Procedures for resolving disputes about eligibility and level of support (if available)
Assistance with Catheterization	Student Board Staff (i.e., volunteer Educational Assistants after training by LHIN (SHSS))	Medical assessment indicating that catheterization must be done during school hours.	LHIN/HNHB Care Coordinator	Medical recommendation indicating catheterization no longer required during school hours OR Parent/guardian assumes responsibility	School or parent/guardian can request a case conference with LHIN/HNHB Care Coordinator
Suctioning	LHIN (SHSS)/HNHB	Medical Referral	LHIN/HNHB Care Coordinator	Recommendation indicating that suctioning no longer required during school hours OR Parent/guardian assumes responsibility	School or parent/guardian can request a case conference with LHIN/HNHB Care Coordinator
Lifting and positioning	School staff as trained by SBRS therapist as appropriate (usually OT/PT)	Assessment by health professional indicating that lifting and positioning must be done during school hours	SBRRs Manager	Recommendation indicating that lifting and positioning no longer required during school hours OR Parent/guardian assumes responsibility	School or parent/guardian can request a case conference with SBRS Manager

Specialized Health Support Service	Agency or position of person who performs the service (e.g.: LHIN, board, staff, parent, student)	Eligibility criteria for students to receive the service	Position of person who determines eligibility to receive the service and the level of support	Criteria for determining when the service is no longer required	Procedures for resolving disputes about eligibility and level of support (if available)
Assistance with mobility	School staff as trained by SBRS therapist as appropriate (usually OT/PT)	OT/PT Medical Referral	Medical Referral	Recommendation indicating that assistance with mobility no longer required during school hours OR Parent/guardian and student assume responsibility	School or parent/guardian can request a case conference with SBRS Manager
Feeding	Oral - school staff G-tube - LHIN (SHSS)/HNHB	Medical Referral	Physician, Nurse	LHIN (SHSS)/HNHB: Parent directives based on physician orders	School or parent/guardian can request a case conference with LHIN/HNHB Care Coordinator
Toileting	School staff - training available from OT/RN	Medical Referral	Physician, Nurse	Once school staff training is complete service may be discharged or placed on hold for future requests	Not applicable

Standard 8: CATEGORIES AND DEFINITIONS OF EXCEPTIONALITIES

PURPOSE: To make information on the categories and definitions of exceptionalities available to the public, including parents and community associations.

Students will be identified as exceptional by an Identification, Placement and Review Committee (IPRC) when their “behavioural, communicational, intellectual, physical or multiple exceptionalities are such that they are considered to need placement in a special education program” (Education Act) (Special Education program implies an Individual Education Plan with modifications within the regular program or a self-contained program.)

The IPRC requires an individual educational (classroom) assessment before making a decision about the identification of a student as exceptional or the placement of a student in a special education program. Educational assessments are conducted by the classroom teacher, often under the guidance of the School Team. Data from ongoing assessment *for* learning by the classroom teacher(s) and from ongoing assessment *as* learning by the student is collected to plan instruction and further assessment. Assessment *for* learning involves gathering evidence from a variety of sources to plan, adjust, and deliver instruction that meets the particular needs of individual students. It includes both diagnostic (i.e., review of recent report cards, consultation with previous teachers, parents, special educational teachers, classroom observations, classroom assessments) and formative (i.e., classroom tests, assignments, observations, progress towards alternate programming goals) assessment practices. Both educational (classroom) assessments and professional supporting assessments contribute to IPRC decisions. The determining factor for the provision of special education programs or services is not any specific diagnosed or undiagnosed medical condition, but rather the needs of the individual student based on an individual assessment of strengths and needs. It should be noted that when the IPRC identifies the student as exceptional and applies the ministry’s definition to describe the exceptionality, it is not diagnosing a condition but merely indicating an educational category. The IPRC identification should not be interpreted as a diagnosis.

There are five categories of exceptionality recognized in the Education Act. The Ministry has defined additional sub-categories for some of the categories.

Resources

Policy/Program Memorandum No. 8:

Identification of and program planning for students with learning disabilities.

Policy/Program Memorandum No. 140:

Incorporating methods of applied behaviour analysis (ABA) into programs for students with autism spectrum disorders (ASD).

Policy/Program Memorandum No. 156:

Supporting transitions for students with special education needs.

Steps to Identification with an Exceptionality are outlined in the Special Education Plan: Section 2

Allowable Accommodations are outlined in the Special Education Plan: Appendix G

Behaviour

A learning disorder characterized by specific behaviour problems over such a period of time, and to such a marked degree, and of such a nature, as to adversely affect educational performance, and that may be accompanied by one or more of the following:

- an inability to build or to maintain interpersonal relationships
- excessive fears or anxieties
- a tendency to compulsive reaction
- an inability to learn that cannot be traced to intellectual, sensory, or other health factors, or any combination thereof.

Major Indicators:

- A persistent pattern of non-compliant, defiant, physical and/or verbally aggressive behaviours observed within the school environment;
- Behaviours are frequent, intense and of such a duration that they compromise the student's learning and ability to be successful at school (for example behaviour is the reason they are not meeting their potential) and/or their behaviour is interfering with the learning of others;
- Behaviours continue despite the implementation of behaviour strategies and interventions;
- Allowable accommodations have proven to be insufficient.

Supporting Assessment:

- ✓ School Documentation demonstrates that the nature, frequency, severity of the behaviours are disruptive to the student's learning;
- ✓ Behaviours are not secondary to other medical, neurobiological or other developmental disorders;
- ✓ All behaviours must be looked at in the context of functional/developmental age, and culture;
- ✓ Behaviour plan is in place;
- ✓ Consultation/involvement with Behavioural system staff and other appropriate support staff has occurred;
- ✓ A psycho-educational assessment and/or speech and language assessment are recommended when school Resource Team deems appropriate.

Communication

Autism

A severe learning disorder that is characterized by:

- a) disturbances in:
 - rate of educational development;
 - ability to relate to the environment;
 - mobility;
 - perception, speech, and language.
- b) lack of the representational symbolic behaviour that precedes language.

Major Indicators:

- Persistent deficits in social communications and social interactions and restricted repetitive patterns of behaviour;
- Allowable accommodations are insufficient;
- ABA strategies, interventions and transition supports are in place and in compliance with PPM140;
- Consultation with ABA and Autism system support staff and other appropriate support staff has occurred.

Supporting Assessment:

- ✓ A diagnosis by a qualified medical practitioner belonging to the College of Physicians and Surgeons of Ontario or qualified member of the College of Psychologists of Ontario.

Deaf and Hard-of-Hearing

An impairment characterized by deficits in language and speech development because of a diminished or non-existent auditory response to sound.

Major Indicators:

- Student is not meeting the grade level expectations (modifications that include either a reduction in the number and/or complexity of the student's current grade level expectations or modifications to a lower grade level);
- Allowable accommodations are insufficient;
- Up to date audiology assessment report completed by an audiologist (preferably within 1 year);
- Recent speech and language assessment has been completed;
- AAB or equivalent standardized assessment of academic achievement has been completed.

Supporting Assessment:

- ✓ Audiology Assessment completed by a registered audiologist belonging to the College of Audiologists and Speech-Language Pathologists of Ontario that states a specific level of hearing loss.

Language Impairment

A learning disorder characterized by an impairment in comprehension and/or the use of verbal communication or the written or other symbol system of communication, which may be associated with neurological, psychological, physical, or sensory factors, and which may:

- a) involve one or more of the form, content, and function of language in communication; and
- b) include one or more of the following:
 - language delay;
 - dysfluency;
 - voice and articulation development, which may or may not be organically or functionally based.

Major Indicators:

- Moderate to severe Receptive Language delay/impairment;
- Moderate to severe Expressive Language delay/impairment;
- Allowable accommodations are insufficient;
- Language impairment is impacting their ability to access the curriculum;
- Remedial programming is essential.

Supporting Assessment:

- ✓ Assessment by a Speech Language Pathologist belonging to the College of Audiologists and Speech Language Pathologists of Ontario
- ✓ Psycho-educational Assessment completed by or under the supervision of a qualified member of the College of Psychologists of Ontario.
- ✓ The student displays a moderate to severe delay in receptive and/or expressive language development, at or below the 5th percentile on standard measures that is not due to cultural or linguistic differences;
- ✓ AAB or equivalent standardized assessment of academic achievement has been completed when deemed appropriate by the school Resource Team.

Speech Impairment

A disorder in language formulation that may be associated with neurological, psychological, physical, or sensory factors; that involves perceptual motor aspects of transmitting oral messages; and that may be characterized by impairment in articulation, rhythm, and stress.

Major Indicators:

- Difficult to understand speech that affects communication;
- The student displays a severe to profound impairment in articulation, phonology, motor speech and/or fluency that results in unintelligible (difficult to understand) speech;
- Accommodations/modifications are essential for orally expressing their knowledge and ideas.

Supporting Assessment:

- ✓ Assessment by a Speech Language Pathologist belonging to the College of Audiologists and Speech Language Pathologists of Ontario.

Learning Disability

One of a number of neurodevelopmental disorders that persistently and significantly has an impact on the ability to learn and use academic and other skills and that:

- affects the ability to perceive or process verbal and non-verbal information in an effective and accurate manner in students who have assessed intellectual abilities that are *at least* in the average range;
- results in (a) academic underachievement that is inconsistent with the intellectual abilities of the student (which are at least in the average range) and/or (b) academic achievement that can be maintained by the student only with extremely high levels of effort and/or with additional support;
- results in difficulties in the development and use of skills in one or more of the following areas: reading, writing, mathematics, and work habits and learning skills;
- may typically be associated with difficulties in one or more cognitive processes, such as phonological processing; memory and attention; processing speed; perceptual-motor processing; visual-spatial processing; executive functions (e.g., self-regulation of behavior and emotions, planning, organizing of thoughts and activities, prioritizing, decision making);
- may be associated with difficulties in social interaction (e.g., difficulty in understanding social norms or the point of view of others); with various conditions or disorders, diagnosed or undiagnosed; or with other exceptionalities;
- is *not* the result of a lack of acuity in hearing, and/or vision that has not been corrected; intellectual disabilities; socio-economic factors; cultural differences; lack of proficiency in the language of instruction; lack of motivation or effort; gaps in school attendance or inadequate opportunity to benefit from instruction.

Major Indicators:

- Difficulties in the development and use of skills in one or more of the following areas:
 - reading
 - writing
 - mathematics
 - work habits/learning skills
- Allowable accommodations insufficient for meeting student needs;
- Psycho-educational assessment indicates that academic achievement is inconsistent with the intellectual abilities of the student (which are at least in the average range) and/or achievement that is only sustainable with high level of effort and/or extensive support.

Supporting Assessment:

- ✓ Assessment reports and results are in compliance with PPM 8;
- ✓ Psycho-educational assessment completed by or under the supervision of a qualified member of the College of Psychologists of Ontario;
- ✓ Assessment measures are based on Canadian norms where possible, are culturally sensitive, and are provided to the student in accessible format, as required (e.g., sign language, Braille, large print);

Intellectual

Giftedness

An unusually advanced degree of general intellectual ability that requires differentiated learning experiences of a depth and breadth beyond those normally provided in the regular school program to satisfy the level of educational potential indicated.

Major Indicators:

- Performance scores on Canadian Cognitive Abilities Test (CCAT) and discussion at school Resource Team.
- Allowable accommodations are insufficient to meet student need.

Supporting Assessment:

- ✓ CCAT results with a composite standard age score of at least 130 (98th percentile rank) which typically means 9th stanine results on two of three subtests;
- ✓ If from outside the board: Psycho-educational assessment completed by or under the supervision of a qualified member of the College of Psychologists of Ontario, with Canadian norms, at the 98th percentile rank or higher on a Full Scale Intelligence Quotient (FSIQ) or General Ability Index (GAI);
- ✓ AAB or equivalent standardized assessment of academic achievement has been completed when deemed appropriate by the school Resource Team.

Mild Intellectual Disability

A learning disorder characterized by:

- a) an ability to profit educationally within a regular class with the aid of considerable curriculum modification and supportive service;
- b) an inability to profit educationally within a regular class because of slow intellectual development;
- c) a potential for academic learning, independent social adjustment, and economic self-support.

Major Indicators:

- Student is not meeting grade expectations;
- Student requires accommodations/modifications to the pace, complexity and/or grade level expectations.

Supporting Assessment:

- ✓ Psycho-educational assessment completed by or under the supervision of a qualified member of the College of Psychologists of Ontario;
- ✓ Cognitive functioning that falls in the very low range;
- ✓ Not the result of impairments in vision, hearing, physical limitations, developmental disability, emotional problems or cultural differences.

Developmental Disability

A severe learning disorder characterized by:

- a) an inability to profit from a Special Education Program for students with mild intellectual disabilities because of slow intellectual development;
- b) an ability to profit from a Special Education Program that is designed to accommodate slow intellectual development;
- c) a limited potential for academic learning, independent social adjustment, and economic self-support.

Major Indicators:

- Student is not able to meet grade level expectations;
- Student is not able to perform age appropriate activities of daily living and personal independence without assistance; Allowable accommodations are insufficient.

Supporting Assessment:

- ✓ Assessments meets the criteria of an Intellectual Disability as defined in the Diagnostic and Statistical Manual of Mental Disorders Fifth Edition (DSM5);
- ✓ Psycho-educational assessments completed by or under the supervision of a qualified member of the College of Psychologists of Ontario;
- ✓ Medical Assessments completed by qualified member of the College of Physicians and Surgeons of Ontario may be accepted;
- ✓ Cognitive functioning that falls in the very low to extremely low range with significant delays in adaptive functioning;
- ✓ Assessment measures are based on Canadian norms where possible; are culturally sensitive and are provided to students in an accessible format, as required;
- ✓ Not the result of impairments in vision, hearing, physical limitations, emotional problems or cultural differences.

Physical

Physical Disability

A condition of such severe physical limitation or deficiency as to require special assistance in learning situations to provide the opportunity for educational achievement equivalent to that of students without exceptionalities who are of the same age or developmental level.

Major Indicators:

- Physical limitation where accommodations and modifications are essential for the student to access the curriculum and/or alternate program.

Supporting Assessment:

- ✓ Diagnosis by a qualified medical practitioner belonging to the College of Physicians and Surgeons of Ontario;
- ✓ Occupational Therapy or Physical Therapy assessment may be required to delineate functional needs.

MULTIPLE

Blind and Low Vision

A condition of partial or total impairment of sight or vision that even with correction affects educational performance adversely.

Major Indicators:

- Accommodations are extensive;
- Allowable accommodations have proven to be ineffective.

Supporting Assessment:

- ✓ Diagnosed by an Ophthalmologist, certified by the Ontario College of Optometrists.

Multiple

Multiple Exceptionalities

A combination of learning or other disorders, impairments, or physical disabilities, that is of such nature as to require, for educational achievement, the services of one or more teachers holding qualifications in Special Education and the provision of support services appropriate for such disorders, impairments, or disabilities.

Criteria for identification:

- Student meets the criteria for identification in two or more exceptionalities with supporting documentation and/or assessment provided by the appropriate practitioners

The Board's IPRC applies the above categories and definitions in making decisions with respect to identification and placement by reviewing all information including assessment documentation, reporting detailed in the OSR, and anecdotal references from board personnel, parent/guardians and agencies:

- to develop a shared understanding of a student's current strengths, needs and learning profile;
- to compare available information with the board's IPRC decision making and assessment criteria;
- to ensure consistent interpretation and application of Ministry of Education requirements.

Standard 9: SPECIAL EDUCATION PLACEMENTS PROVIDED BY THE BOARD

The purpose of the standard is to provide details of range of placements provided by the Board, and to inform the public that placement of a student in regular class is the first option considered by an Identification Placement and Review Committee (IPRC).

SEAC participates in the review of self-contained classes, their locations and nature. Additionally, SEAC members were involved in the development of the Special Education Guiding Principles, which provides direction to the nature, and focus of congregated classes in Grand Erie.

Regular Class:

Placement in a regular class should be considered as the first option:

- Differentiated instruction and assessment and appropriate accommodations and modifications should be in place;
- Classroom Teachers should receive training in evidence-based strategies that improve student's learning (Learning for All: A Guide to Effective Assessment and Instruction for All Students, Kindergarten to Grade 12);
- Support from the Learning Resource Teacher should be provided to classroom teachers to build capacity and improve classroom instruction.
- Educational Assistants can assist with the implementation of the programming for students with medical and safety needs;
- System special education support staff build the capacity of schools to meet the broad range of student special education needs. (.

Grand Erie is committed to fostering an inclusive culture in schools. The culture of the school is essential in fostering an attitude of inclusion, and an attitude of inclusion recognizes and values the tiered approach to the provision of special education programs and services. An attitude of inclusion ensures that students in self-contained classes are welcomed and integrated into their school communities.

The Identification, Placement and Review Committee (IPRC) always begins with regular class placement in mind but may determine that a self-contained setting with a high degree of expertise and support is required to meet the student's needs.

When more intensive support is required for a student, self-contained placement may be considered. Educational implications of participation in self-contained programs should be discussed with the parents and students through the Identification, Placement and Review Committee (I.P.R.C).. When a self-contained placement may be appropriate, it is a consultative process which honours the voices of parents, school staff, program support staff and the student. When an IPRC confirms the student is exceptional and determines placement into a self-contained program is appropriate, discussion of program options may occur as follows:

- discussion may include the type of Special Education Services, the degree of curriculum modification, and any need for personalized equipment;
- provides some direction for the IEP;
- does not commit to a specific location or specific amount of individualized support (location is not part of the IPRC and is not subject to the appeal process).

To further support integrated programming, the sub-category of Delivery Options, Special Education Class, states “integration into regular program should occur, in consultation with the parents/guardians, as it is deemed appropriate for the individual pupil by the School Principal”.

The ways in which a student may be integrated into the regular, age-appropriate classroom are as follows:

- integrated on a regularly scheduled basis for specific subjects or periods of time;
- integrated on the basis of specific content in a subject area;
- integrated on days when special events occur;
- integrated for assemblies;
- integrated into social situations.

When being integrated into a regular class the student may receive support from an Educational Assistant. When the student’s placement is a Special Education Class with Partial Integration the student must be integrated into a regular class for at least one instructional period daily. When integration does occur for a student whose placement is in a self-contained program, it does not exceed 49% of the school day.

Types of placements provided at the elementary and secondary levels:

There are five placement options available to students in elementary and secondary levels.

Regular Class

- Indirect Support
- Direct Support (Resource Assistance)
- Withdrawal Assistance

Self-contained Class

- Partial Integration
- Full Time

The following one or more criteria are considered for admission to a self-contained class placement:

- the student requires a uniquely designed individual program for more than 50% of the day;
- the student requires a range of specialized instructional support for more than 50% of the day;
- the student requires a classroom environment containing specialized facilities.

Admission to placement will occur as soon as possible. The student may require support or services in the regular class placement while waiting for admission to a special class.

The level of support provided in each placement, including the assignment of intensive support, is determined by:

- needs of students within a school;
- needs of students within a Family of Schools;
- needs of students throughout the entire Board;

The level of support for individual students is based on student needs, such as:

- safety - to self or others;
- medical issues;
- academic;
- social /emotional;
- physical;
- alternative programming;
- augmentative communication.

An IPRC may recommend a change in a students' placement if:

- the student requires a placement that permits a greater focus on the goals and objectives of the Individual Education Plan (IEP);
- the student is meeting goals and objectives more closely approximating the expectation of the Ontario Curriculum and requires a program more focused on those goals and objectives.

When the needs of a student cannot be met within the Board's range of placements, an IPRC may support one of the following temporary or permanent placements:

- Child and Parent Resource Institute (CPRI)
- Education Programs in Care, Treatment, Custody and Correctional Facilities
- Amethyst School (for students with ADHD and/or severe learning disabilities)
- Trillium School (for students with severe learning disabilities)
- Robarts School (for students who are deaf /hard of hearing)
- W. Ross Macdonald School (for students who are blind/deaf-blind)

Options for placement outside the Board are communicated to the parent/guardians before the IPRC through:

- case conferences.
- visit to the outside placement.

SEAC is presented with a general overview of the philosophy of types of placements available and changing needs for Self-contained program throughout the Board. They provide feedback and discussion about the philosophy and changing needs. A final copy of the Self-contained Classes and their locations is then shared with SEAC as information.

Most students identified as exceptional within Grand Erie DSB are placed in a regular class. The document that follows identifies the location of the special classes within the Board for the 2020-21 school year.

Elementary Self Contained 2021-2022	
School	Class
Brant North	
Cedarland	Life Skills
Centennial Grand Woodlands	Life Skills
Cobblestone	Transitions
Cobblestone	Life Skills
Graham Bell	Intensive Support - Autism
Grandview	Intensive Support - Autism
Greenbrier	Intensive Support - Autism
Greenbrier	Int Transitions
Greenbrier	Life Skills
Prince Charles	Intensive Support - Multi-Handicap
Prince Charles	Intensive Support - Autism
Russell Reid	Transitions
Russell Reid	Strategies - Autism
Brant South	
Agnes Hodge	Intensive Support - Multi-Handicap
Branlyn	Strategies
James Hillier	Intensive Support - Autism
Ryerson Heights	Life Skills
Haldimand	
Caledonia Centennial	Strategies
Hagersville Elem	Life Skills
Hagersville Elem	Transitions
JL Mitchener	Intensive Support - Autism
Mapleview	Intensive Support - Autism
Thompson Creek	Intensive Support - Autism
Norfolk	
Bloomsburg	Intensive Support - Autism
Bloomsburg	Transitions
Boston	Gifted
Delhi Public	Strategies
Langton	Intensive Support - Autism
Lynndale Hts	Life Skills

Secondary Self Contained 2021-2022

School	Class
Brant North	
North Park	Bridge
North Park	Vocational Skills 1
North Park	Vocational Skills 2
North Park	Intensive Support - Autism
Paris District	Bridge
Paris District	Life Skills
Brant South	
Pauline Johnson	Vocational Skills
Pauline Johnson	Intensive Support - Multi-Handicap
Pauline Johnson	Intensive Support - Multi-Handicap
Pauline Johnson	Life Skills
Pauline Johnson	Life Skills
Pauline Johnson	Life Skills
Pauline Johnson	Bridge
Tollgate	Bridge
Tollgate	Vocational Skills
Tollgate	Vocational Skills
Tollgate	Intensive Support - Autism
Tollgate	Intensive Support - Autism
Tollgate	Life Skills
Tollgate	Life Skills
Tollgate	Bridge
Haldimand	
Cayuga Secondary School	Vocational Skills
Cayuga Secondary School	Life Skills 1
Cayuga Secondary School	Life Skills 2
Cayuga Secondary School	Intensive Support - Autism
Cayuga Secondary School	Intensive Support - Autism
Cayuga Secondary	Bridge
Cayuga Secondary	Intensive Support - Multi-Handicap
Hagersville Sec	Vocational Skills
Hagersville Sec	Bridge
Norfolk	
Simcoe Composite	Bridge
Simcoe Composite	Vocational Skills
Simcoe Composite	Life Skills
Simcoe Composite	Life Skills
Simcoe Composite	Bridge
Valley Hts	Vocational Skills
Waterford DHS	Life Skills 1
Waterford DHS	Life Skills 2
Waterford DHS	Intensive Support - Multi-Handicap

**SPECIAL EDUCATION PLACEMENTS/PROGRAMS
PROVIDED BY THE BOARD
2019-2020**

Self-Contained Class/Program	Criteria for Placement	Class Capacity
<p>(Intensive Support- Autism)</p> <ul style="list-style-type: none"> Provides individualized programming for students with Autism Spectrum Disorder; Programming will align with the individual strengths and needs of the student – including modified or alternative curriculum; Programming will support the principles of Applied Behaviour Analysis (ABA), as outlined in Ministry of Education PPM 140; Programming will include individualized transition plans for students, as outlined in PPM 140. 	<p>Placement in an ASD Class may be recommended through the Identification Placement and Review Committee (IPRC) process to a student who:</p> <ul style="list-style-type: none"> Identified as an exceptional student through the IPRC process under the category of Communication: Autism; Evidence that ongoing interventions in regular class have been insufficient to meet the student's needs, including the utilization of ABA strategies, interventions and transition supports; Evidence that smaller class size and program structure will allow the child to thrive and be more successful in their school environment. 	6
<p>Life Skills (Lifeskills 2020-21)</p> <p>The program in a self-contained Life Skills class focuses on developing functional skills for the highest possible level of personal independence. The program is developed based on the student's individual needs in the following areas:</p> <ul style="list-style-type: none"> Functional Academics – literacy and numeracy skills that are relevant and meaningful to the student. Some students will be at a pre-academic stage of learning. Social Skills – demonstrating appropriate social behaviours in a variety of settings both in the school and in the community Skills for Independent Living – encompass a wide range of skills including: personal care and hygiene, shopping and food preparation, cleaning and organizing tasks, transportation and community safety skills, pre-vocational skills), and recreation Communication Skills – communicating for different purposes in a variety of settings; some students may require assistive or augmentative means of communication Self-advocacy skills – asking for help when help is required; making choices and decisions; speaking up when there is a problem 	<p>Placement in a Self-Contained Lifeskills Class may be recommended through the IPRC process when:</p> <ul style="list-style-type: none"> The student has been Identified through the IPRC process under the category of Intellectual: Developmental Disability; The student requires a program that focuses on functional skills for daily living and personal independence; Evidence that smaller class size and program structure will allow the child to thrive and be more successful in their school environment; The student will require a supported living environment and supported employment in the future 	10

<p>Gifted Self-Contained</p> <ul style="list-style-type: none"> • Provided at the Elementary Level (Grade 5-8); • Provides differentiated learning experiences of depth and breadth beyond the regular curriculum; • Provides opportunity for collaboration, learning and leadership with peers of similar intellectual abilities; • Programming focuses on critical and high order thinking skills, creativity, problem solving, research, technology, and metacognition; • Integration into regular class setting as appropriate for individual student needs and as school schedules allow. 	<p>Placement in a Gifted class may be recommended at the Grade 5-8 level through the system IPRC process to a student who:</p> <ul style="list-style-type: none"> • Identified as an exceptional student through the IPRC process under the category of Intellectual: Gifted; • Evidence that ongoing interventions in regular class and enrichment program have been insufficient to meet the student's academic or social/emotional needs; • May exhibit exceptionally high performance beyond grade level expectations in numerous subject areas which can be better addressed in a congregated setting with students of similar intellectual abilities. 	<p>25</p>
<p>Secondary Programs that may benefit Students who are Gifted or Cognitively Advanced</p> <p>(Note: These programs are not designed specifically for students with special education needs (i.e. Gifted)</p> <p>The academic stream at Secondary meets the programming needs of many students with Gifted and/or Enriched learning needs.</p> <p>Pre-Advanced Placement and Advanced Placement (AP) courses are available at North Park Collegiate and Pauline Johnson. Advanced placement courses allow students to pursue university-level studies while in high school. Many universities grant credits to high-achieving AP exam writers. AP courses are currently offered in Biology, Calculus, Chemistry, English Literature, French, Physics, and Studio Art at different Grand Erie schools. Offerings vary year by year.</p> <p>The Laurier Program is offered at Brantford Collegiate Institute in partnership with Wilfred Laurier University- Brantford Campus. The program engages students in experiential learning opportunities with a multi-disciplinary approach focused on: computer design and media, entrepreneurship, game design, and STEAM education. There is an application process to be accepted to the Laurier Program.</p> <p>S.O.A.R. Elite Academy of Athletics is available at Pauline Johnson. This program requires that students excel in three main areas: academics, athletics, and leadership. Student athletes in</p>	<p>Registration in these courses and programs is determined at the school that holds the program.</p>	<p>Class size varies by program and enrollment.</p>

<p>this program are expected to be self directed, self motivated, dedicated to fitness, academics and positive character, and receptive to a holistic training approach and constructive feedback.</p> <p>Specialist High Skills Majors (SHSM) – Students participating in a SHSM complete a bundle of classroom courses, workplace experiences, and sector certifications to receive a special designation on their diploma. A SHSM can prepare students for apprenticeships, college, university or the workforce</p>		
<p>Transitions Self Contained Elementary (Transitions 2020-21)</p> <ul style="list-style-type: none"> • Available in Elementary beginning in Grade 7 • Programming will align with individual strengths and needs of the student - modified or alternative curriculum; • Individualized programming in literacy and numeracy is modified to the degree that significant achievement gaps can be addressed; • Alternative programming in the area of personal living skills, pre-employment and employment skills (vocational); • Allows for integration into the regular class in subject areas of strength up to 49% of the day; • Programming in the self-contained classis not for credit • Secondary placements options are available for both fully and partially contained. 	<p>Placement in a MID (Transitions) class may be recommended beginning in Grade 7) through the IPRC process to a student:</p> <ul style="list-style-type: none"> • Who is identified as an exceptional student through the IPRC process, usually within the category intellectual: Mild Intellectual Disability; • Evidence that ongoing interventions in regular class have been insufficient to meet the student’s academic or social/emotional needs; • Where there is evidence that the student will be unable achieve enough credits in Secondary School to graduate with an Ontario Secondary School Diploma (OSSD). Opportunity for graduation with some credits would result in a Certificate. 	16
<p>(Intensive Support- Multi Handicapped)</p> <p>The program in an MH class focuses on individual goals for each student to meet his or her specific needs in the following areas:</p> <ul style="list-style-type: none"> • Medical and Safety needs; • Personal Care - feeding and toileting; • Physical/Motor – physical therapy needs as per Physiotherapist (PT) and Occupational Therapist (OT) recommendation; developing gross and fine motor skills; • Cognitive and Sensory – stimulating students’ minds through various modalities (sight, touch, hearing, taste, smell); developing understanding of cause and effect; building functional skills (e.g. sorting, matching); • Communication – developing communication skills based on recommendations from Speech/Language Pathologist (SLP) reports; 	<p>Placement in a Self-Contained Intensive Support - Multi-Handicapped Class may be recommended through the IPRC process when:</p> <ul style="list-style-type: none"> • Student is Identified through IPRC process under the category Multiple; • Student has both significant physical and intellectual impairments; • Student requires a high level of support for physical or medical needs (toileting, feeding, mobility, supervision for safety). 	6

<p>providing authentic opportunities to motivate the student to communicate; students may require assistive or augmentative means of communication;</p> <ul style="list-style-type: none"> • Social Interaction – providing opportunities for students to participate in meaningful social interactions with people beyond the MH classroom; • Self-help – developing skills toward greater independence (e.g. eating with a spoon; washing hands). 		
<p>Bridge Self-Contained -Secondary Bridge is an intensive resource program for students who are able to focus on only two or three periods of credit-bearing courses. A classroom teacher and EA work with students individually to support success in their other classes, while encouraging positive social interactions. Bridge is only 1 or 2 sections a semester. On Track sections on their own are not for credit.</p>	<p>Students are placed in Bridge classes by an IPRC.</p>	<p>16</p>
<p>Strategies Self-Contained</p> <ul style="list-style-type: none"> • Strategies classes are offered at the Elementary level for Junior/Intermediate age level • Provides individualized Behaviour Support Programming; • Programming will align with individual strengths and needs of the student - modified or alternative curriculum; • Emphasis on self advocacy, recognizing personal triggers and self regulation; • Allows for integration into the regular class in subject areas of strength up to 49% of the day; • Increased Behaviour Counsellor support; • Goal is for students to acquire the necessary skills to return to regular class within 2 years 	<p>Placement in a Strategies classroom may be recommended from SK to 8 level through the System IPRC process to student who:</p> <ul style="list-style-type: none"> • Identified as an exceptional student through the IPRC process under the category of Behaviour; • Evidence that learning gaps are the outcome of behaviour, and not an overall low level of cognitive development or Learning Disability. • Evidence that ongoing interventions in the regular classroom, as outlined in an Behaviour and Safety Plan, have been insufficient to meet the students' needs; • Evidence that smaller class size and program structure will allow the needed focus on alternative behaviour goals 	<p>8</p>

Standard 10: INDIVIDUAL EDUCATION PLANS (IEP)

The purpose of the standard is to inform the ministry and the public about the ways in which the Board is complying with Ministry requirements for implementing IEPs.

Grand Erie strives to plan an educational program for a student with special education needs through communication among:

- School Team members
- Parents/guardians
- School board and community professionals involved with the student
- The student (where appropriate)

IEP development is a collaborative process that is usually initiated by the school, after collection of observation and assessment data that reveals some difficulty accessing the curriculum. Parents may inquire about the initiation of an IEP through their child's classroom teacher, the Learning Resource Teacher, or the school principal.

While each school has an individual process for IEP development and implementation, in general the Learning Resource Teacher coordinates the development of the IEP while the classroom teacher is responsible for decisions related to program planning. The principal monitors overall implementation.

School staff participate in consultation with parents/guardians and students at various phases in the process. Consultation may take the form of a letter requesting input, a phone call, a meeting, or other appropriate informal or formal consultation methods. An IEP information brochure called *Individual Education Plan (IEP) – A Guide for Parents* is available for schools to share with families and is found in Appendix F of this document.

The IEP process follows five phases:

1. Gathering information
2. Setting the direction
3. Developing the IEP to include the student's special education program and services
4. Implementing the IEP
5. Reviewing and updating the IEP

The Individual Education Plan is divided into the following sections:

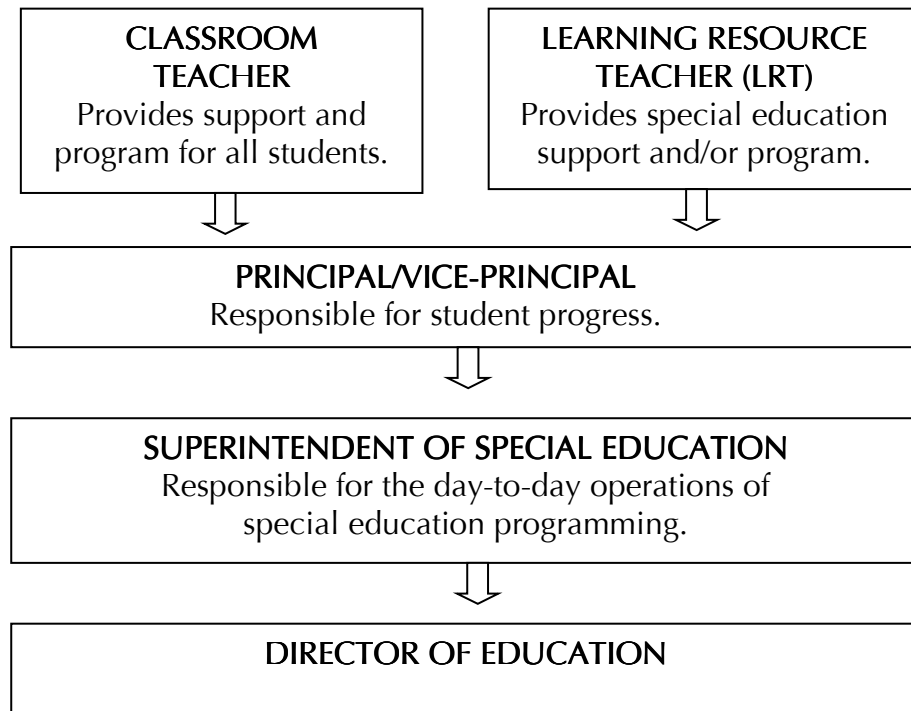
- i. Identification
 - Reason for development of the IEP
 - Placement information
 - IEP completion date
 - IEP revision date
 - Student Profile
 - Ontario Education Number (OEN)
 - Exceptionality
 - IPRC Placement Decision (as applicable)
 - IEP Development Team
 - Assessment
 - Relevant Educational & Clinical Assessment Data
 - Strengths
 - Needs

- Health Support Services
- Accommodations
- Instructional Accommodations
- Environmental Accommodations
- Assessment Accommodations
- ii. Human Resources
- iii. Equipment
- iv. Provincial Assessments
 - Permitted Accommodations
 - Exemptions from Provincial Assessment
- v. Elementary Program Exemptions
- vi. Secondary compulsory course substitutions
- vii. Program Areas
 - Modified Programs
 - Accommodations
 - Alternative Programs
 - Baseline Level of Achievements
 - Annual Program Goal
 - Learning Expectations, Teaching Strategies and Assessment Methods
 - Teaching Strategies
 - Strengths/Areas for Improvement/Next Steps
- viii. Transition Plan
- ix. Sources consulted in the Development of the IEP
- x. Parent/Student Consultation
- xi. Staff Review & IEP Updating

A blank IEP template showing each of the above sections is found in Appendix G of this Special Education Plan.

The IEP is a working document that is adjusted to match assessment data on an ongoing basis. It is reviewed and updated at the beginning of each reporting period in response to assessment from the previous term/semester. The IEP process is cyclical and involves repeated review, evaluation, and adjustment. There should be a clear link between the learning expectations outlined in the IEP and the Progress Report and Provincial Report Card. Dispute Resolution Process

Collaboration between school staff and parents is essential. When parents have questions or concerns about their child's Individual Education Plan, or special education programming, these are best addressed at the school level, always beginning with the classroom teacher or learning resource teacher. If a parent feels that their question or concern has not been adequately addressed, they should then discuss the issue with the school principal. The Superintendent of Special Education is also able to assist with unresolved concerns and can be contacted at the Education Centre (519-756-6301).



Teacher Consultants for Special Education are assigned to specific schools and work directly with school staff to provide special education support. The Principal Leader for Special Education provides system support for special education programs and services. These staff are also available to assist parents with questions or concerns related to a student's Individual Education Plan. A school principal may arrange a meeting between parents, school staff, system staff, and/or the Superintendent of Special Education in order to seek a mutual understanding.

Parents may not agree with everything in an IEP or the focus may differ from their requests. Schools are responsible for establishing a program that best suits a child's strengths and needs while at school. The school principal is ultimately responsible for the initiation, implementation, and review of the IEP and ensuring that the parent is consulted in its development. The principal is not obliged to accept every parental suggestion but must give appropriate consideration to requests. The principal should provide reasons for not including parental requests in the IEP. If parents disagree with significant aspects of the IEP, they may request a meeting with appropriate school and board staff.

If all attempts at dispute resolution related to the IEP have been unsuccessful, a parent may contact the Ministry of Education for clarification or assistance. The Office of the Ombudsman of Ontario may also assist. The Ontario Ombudsman oversees all aspects of public education in Ontario and can help with unresolved complaints or investigate systemic issues. Parents can fill out an online complaint form with the Office of the Ombudsman of Ontario, call 1-800-263-1830, or email for assistance at info@ombudsman.on.ca.

Standard 11: PROVINCIAL AND DEMONSTRATION SCHOOLS IN ONTARIO

The purpose of the standard is to provide the public with information about the Provincial and Demonstration Schools that are operated for students who are deaf, blind, or deaf-blind, or who have severe learning disabilities, which may include attention-deficit hyperactivity disorder (ADHD).

Provincial and Demonstration Schools:

- are operated by the Ministry of Education;
- provide education for students who are deaf or blind or deaf-blind or who have severe learning disabilities;
- provide an alternative education option;
- serve as regional resource centres for students who are deaf, blind, deaf-blind, or learning disabled;
- provide preschool home visiting services for students who are deaf or blind or deaf-blind;
- develop and provide learning materials and media for students who are deaf, blind, or deaf-blind;
- provide school board teachers with resource services;
- play a valuable role in teacher training.

a) W. Ross Macdonald School: School for the Blind and Deaf-Blind

W. Ross Macdonald School is located in Brantford and provides education for students who are blind, visually impaired, or deaf-blind. The school provides:

- a provincial resource centre for the visually impaired and deaf-blind;
- support to local school boards through consultation and the provision of special learning materials, such as Braille materials, audiotapes, and large-print textbooks;
- professional services and guidance to Ministries of Education on an interprovincial, cooperative basis.

Programs are tailored to the needs of the individual student and:

- are designed to help these students learn to live independently in a non-sheltered environment;
- are delivered by specially trained teachers;
- follow the Ontario curriculum developed for all students in the Province;
- offer a full range of courses at the secondary level;
- offer courses in special subject areas such as music, broad-based technology, family studies, physical education, and mobility training;
- are individualized, to offer a comprehensive “life skills” program;
- provide through home visiting for parent/guardians and families of preschool deaf-blind children to assist in preparing these children for future education.

W. Ross Macdonald provides a range of resource services and outreach programs to families and school boards in support of students who are blind, deafblind, or low vision. A referral process is in place for individual students to be seen by resource consultants. After consultation with the Resource Team, a school may submit a referral through the Provincial Schools website to request an educational/functional vision assessment for a student who is blind or visually impaired.

Schools may also complete a workshop request form for a personalized workshop on a topic related to vision.

Considerations for placement of existing Grand Erie students at W. Ross Macdonald must go through the Resource Team process for discussion. If the Resource Team determines that it is appropriate to undertake a formal request for placement and if the parent is in support, a request should be made by the Special Education Teacher Consultant who will coordinate a System IPRC.

Students moving into Grand Erie to specifically to attend W. Ross Macdonald must complete registration paperwork at the home school. The home school principal or W. Ross Macdonald contacts the Program Coordinator for Special Education to arrange a System IPRC.

b) Provincial Schools for the Deaf

The following Provincial Schools offer services for deaf and hard-of-hearing students:

- Sir James Whitney School for the Deaf in Belleville (serving eastern Ontario);
- Ernest C. Drury School for the Deaf in Milton (serving central and northern Ontario);
- Robarts School for the Deaf in London (serving western Ontario);
- Centre Jules-Léger in Ottawa (serving francophone students and families throughout Ontario).

Admittance to a Provincial School is determined by the Provincial Schools Admission Committee in accordance with the requirements set out in Regulation 296.

These schools provide elementary and secondary school programs for deaf students from preschool level to high school graduation. The curriculum follows the Ontario curriculum and parallels courses and programs provided in school boards. Each student has his/her special needs met as set out in his/her IEP.

Schools for the deaf:

- provide rich and supportive bilingual/bicultural educational environment which facilitate students language acquisition, learning, and social development through American Sign Language (ASL) and English;
- operate primarily as day schools;
- provide residential facilities five days per week for those students who do not live within reasonable commuting distance from the school. (residence is provided for those students who live over 70 kilometers from the school)

Each school has a Resource Services Department, which provides:

- consultation and educational advice to the parent/guardian of deaf and hard-of-hearing children and school board personnel;
- information brochures;
- a wide variety of workshops for the parent/guardian, school boards, and other agencies;
- an extensive home-visiting program delivered to the parent/guardian of deaf and hard-of-hearing preschool children by teachers trained in preschool and deaf education.

If a Grand Erie school requires support with the delivery of program to a student who is Deaf or hard of hearing, it should first contact Grand Erie's Teacher Technician for SEA – Hearing to ensure that the student's equipment needs are being met. If additional supports are required, under the guidance of the SEA Teacher Technician – Hearing, the school may then request consultative services from a Provincial School.

Considerations for placement at a Provincial School must go through the Resource Team process for discussion. If the Resource Team determines that it is appropriate to undertake a formal request for placement and if the parent is in support, a request should be made by the Special Education Teacher Consultant who will coordinate a System IPRC. The IPRC placement decision must indicate that Grand Erie supports placement at a Provincial School before a student will be admitted.

Provincial School Contacts

Teachers may obtain additional information from the Resource Services Departments of the Provincial Schools and the groups listed below.

Provincial Schools Branch, Ministry of Education

Provincial Schools Branch
255 Ontario Street South
Milton, Ontario
L9T 2M5
Tel.: (905) 878-2851 Fax: (905) 878-5405

Schools for the Deaf

The Ernest C. Drury School for the Deaf 255 Ontario Street, S. Milton, Ontario L9T 2M5 Tel.: (905) 878-2851 Fax: (905) 878-1354 Fax: (613) 967-2857	The Robarts School for the Deaf 1090 Highbury Avenue London, Ontario N5Y 4V9 Tel.: (519) 453-4400 Fax: (519) 453-7943	The Sir James Whitney School for the Deaf 350 Dundas Street West Belleville, Ontario K8P 1B2 Tel.: (613) 967-2823
--	---	--

School for the Blind and Deaf-Blind

W. Ross Macdonald School
350 Brant Avenue
Brantford, Ontario
N3T 3J9
Tel.: (519) 759-0730
Fax: (519) 759-4741

School for the Deaf, Blind, and Deaf-Blind

Centre Jules-Léger
281 rue Lanark
Ottawa, Ontario
K1Z 6R8
Tel.: (613) 761-9300
Fax: (613) 761-9301

Provincial Demonstration Schools

The Ministry of Education provides the services of four Provincial Demonstration Schools for Ontario children with severe learning disabilities.

These schools are the following:

Amethyst School 1090 Highbury Avenue London, Ontario N5Y 4V9 Tel.: (519) 453-4408 Fax: (519) 453-2160	Centre Jules-Léger 281 rue Lanark Ottawa, Ontario K1Z 6R8 Tel.: (613) 761-9300/761-9304 Fax: (613) 761-9301 TTY: (613) 761-9302
--	---

Sagonaska School
350 Dundas Street West
Belleville, Ontario
K8P 1B2
Tel.: (613) 967-2830
Fax: (613) 967-2482

Trillium School
347 Ontario Street South
Milton, Ontario
L9T 3X9
Tel.: (905) 878-8428
Fax: (905) 878-7540

Each Provincial Demonstration School has an enrolment of forty students. The language of instruction at the Amethyst, Sagonaska, and Trillium schools is English; at Centre Jules-Léger, instruction is in French.

Application for admission to a Provincial Demonstration School is made on behalf of students by the School Board, with the parent/guardian consent. The Provincial Committee on Learning Disabilities (PCLD) determines whether a student is eligible for admission.

Although the primary responsibility to provide appropriate educational programs for students with learning disabilities remains with School Boards, the Ministry recognizes that some students require a residential school setting for a period of time.

The Provincial Demonstration Schools were established to:

- provide special residential education programs for students between the ages of 5 and 21 years;
- enhance the development of each student's academic and social skills;
- develop the abilities of the students enrolled to a level that will enable them to return to programs operated by a local school board within two years.

In addition to providing residential schooling for students with severe learning disabilities, the Provincial Demonstration Schools have special programs for students with severe learning disabilities in association with attention-deficit/hyperactivity disorder (ADD/ADHD). These are highly intensive, one-year programs.

If a Grand Erie school requires support with the delivery of program to a student with a severe learning disability, it should first contact Grand Erie's Teacher Technician for SEA – Computers to ensure that the student's equipment needs are being met.

Considerations for placement at a Provincial School must go through the Resource Team process for discussion. If the Resource Team determines that it is appropriate to undertake a formal request for placement and if the parent is in support, a request should be made by the Special Education Teacher Consultant who will coordinate a System IPRC. The IPRC placement decision must indicate that Grand Erie supports placement at a Provincial School before a student will be admitted.

An application binder will be completed by the sending school.

The Trillium School also operates Learning for Emotional and Academic Development (LEAD), a special program for students with severe learning disabilities who require an additional level of social/emotional support.

Further information about the academic, residential, LEAD, and LD/ADHD, programs is available from the Demonstration Schools through the Special Needs Opportunity Window (SNOW).

An in-service teacher education program is provided at each Provincial Demonstration School. This program is designed to share methodologies and materials with teachers of Ontario School Boards. Information about the programs offered should be obtained from the schools themselves.

Following are current statistics (for the school year 2020-21 with respect to the number of qualified resident students attending Provincial Schools and Provincial Demonstration Schools:

W. Ross Macdonald School	28
Ernest C. Drury School for the Deaf	7
Robarts School for the Deaf	0
Amethyst Demonstration School.....	1
Trillium Demonstration School.....	2

Transportation is provided for students, and assistants if required, to and from Provincial and Demonstration Schools. Depending on the needs of the students, transportation may be provided by taxi, van, minibus, wheelchair bus or wheelchair taxi.

Standard 12: SPECIAL EDUCATION STAFF

The purpose of the standard is to provide specific details on board staff to the ministry and the public.

Special Education Staff	ELEM.	SEC.	Staff Qualifications
Teachers of Exceptional Students			OCT & qualified to teach in Pr/Jr/Int/Sr divisions
Learning Resource Teachers (LRTs)	64 FTE	13 FTE	Special Education (minimum Part I)
Teachers for Self-Contained Classes	32 FTE	39.33 FTE	Special Education (minimum Part I)
Other Special Education teachers			Special Education (minimum Part I)
Principal Leader Special Education	1.0		Principal Qualifications; Special Education Specialist
Program Coordinators (Special Education and Applied Behavioural Analysis)	2.0		Special Education Specialist
Teacher Consultants	Elementary 4.0 Secondary 1.0		Special Education Specialist
Teacher Consultants	3.0		Intellectual Disabilities Gifted Autism
Teacher Technician	2.0		Assistive Technology Deaf/Hard of Hearing
Educational Assistants in Special Education			
Educational Assistants (includes Transitional Support Educational Assistants)	303		Community College Diploma in field relating to special needs; experience
Lead Educational Assistant	4.0		Community College Diploma in field relating to special needs; experience
Lead Educational Assistant for Special Education Amount (SEA) Support	1.0		Community College Diploma in field relating to special needs; experience

Other Professional Support Services Staff		
School Programs and Supports Lead	1.0	Master's Degree
School Mental Health and Well-Being Lead	1.0	Master's Degree
Psycho-Educational Consultants	6.0	Master's Degree
Speech-Language Pathologists	7.0	Master's Degree in Speech/Language
Communicative Disorder Assistants	7.0	Community College/University
Social Workers	7.5	Master's Degree in Social Work
Applied Behaviour Analysis Expert	1.0	Bachelor of Arts
Board Certified Behaviour Analyst	2.0	Master's Degree
Behaviour Counsellors	5.0	Bachelor of Arts or Child & Youth Services Worker Diploma
Child and Youth Workers	14.0	Child & Youth Services Worker Diploma
Indigenous Child and Youth Worker	1.0	Child & Youth Services Worker Diploma
Attendance Counsellors	6.0	Bachelor of Arts
Indigenous Attendance Counsellors	1.0	Bachelor of Arts

Standard 13: STAFF DEVELOPMENT

The purpose of the standard is to provide details of the board's professional development plans for special education staff to the Ministry and to the public.

Goal

The goal of the Special Education Staff Development Plan in Grand Erie is to ensure that all staff has current knowledge and skills to provide appropriate support and programming for all students with special needs.

Involving the Stakeholders

Areas for professional development are determined by:

- Ministry of Education
- Senior administration
- System support personnel
- School and area administration
- Special Education and regular classroom teachers/early childhood educators
- Educational Assistants
- Parents/Guardians

Professional Development activities offered by the Board are often determined by staff identifying perceived areas of need. Input is received through the following avenues:

System:

- Special Education/Student Support Services
- Special Education Team (Principal Leader, Coordinator, Consultants, Mental Health & Wellness Lead, School and Program Supports Lead)
- Executive Council, in consultation with school administrators
- The Board's Multi-Year Plan
- The Board's Annual Operating Plans
- System Committees
- Secondary Special Services Department Heads Association
- Leadership Steering Committee

Area:

- Administrators
- Area support staff

Family:

- Learning Resource Teachers (LRTs) and Special Education classroom teachers request in-service
- Teacher Consultants - Special Education identify family needs
- CUPE Professional Development Committee

School Professional Development Committees

School:

- administrators and staff request in-service for perceived areas of need
- School Councils and Home and School Associations request in-service
- school teams or resource teams request in-service
- school-based professional development committees

SEAC is consulted about staff development in the following ways:

- monthly meetings
- access through the Board's web page
- participation in Ministry of Education training sessions

Professional Development and Training

Priorities in the area of staff development are determined by:

- compliance with Ministry of Education directives, regulations, and initiatives
- response to urgent needs of students, staff and Board
- response to Education Quality and Accountability Office (EQAO) results
- related area of emphasis in Special Education
- response to demographic needs as identified by system personnel, community support agencies, medical staff, advocacy groups
- response to health and safety issues.

Staff development is provided in a variety of formats:

- Workshops on Professional Development days, before and after-school sessions, staff meetings at the invitation of school principals, and in the context of system initiatives such as the /Fundamentals of Math, Applied Behaviour Analysis (ABA) and New Teacher Induction Program (NTIP)
- Just-in-time training for LRTs on special education processes, Ministry requirements, etc.
- School and system training to develop an understanding of new Ministry requirements is provided as needs arise
- Training to support system programs for new to role staff is on-going (i.e., Individual Education Plan (IEP) writing, Academic Achievement Battery (AAB), Behaviour Management Systems Training (BMS), Violent Threat Risk Assessment (VTRA), Tragic Events Response Team (TERT))
- Conferences are attended by board staff throughout the year by designated staff
- Training in current counselling methods for the purpose of evidence-based and consistent approaches and services delivery.

Awareness of Professional Development Opportunities

Ways in which the School Board staff are made aware of professional development opportunities:

- School Resource Team Meetings, and Support Staff Meetings
- Staff Portal
- Staff email
- Monthly administrator and LRT Special Education newsletters
- Biweekly *Special Edition for Special Education* memo for Special Education Department Staff
- E-teacher electronic bulletin board and registration system
- Board maintained web page
- Family of Schools Administrators' Meetings

Much of our Professional Development work this year involved shifting traditional workshop sessions and resources to a virtual, online model that can be accessed at any time. Staff have been involved with creating resources and videos to post in the Special Education Professional Learning Environment (PLE) in BrightSpace. Any workshops delivered were also recorded and posted in the Special Education PLE.

The following formal Professional Development opportunities were offered during the 2020-21 school year:

Title	Description
Behaviour Management System (BMS)	Multiple sessions offered on PD days, after school, or at school locations where the main goals include improving safety and security for all staff and students, the promotion of respectful working and learning environments and breaking the cycle of inappropriate behaviour and consequences.
BMS Recertification	Recertification session for those already trained in Behaviour Management Systems.
ASIST	Applied Suicide Intervention Skills Training for staff only
LRT Training Sessions	Workshops offered throughout the year to highlight new items that affect Learning Resource Teachers – upgrades to LITE, Medical Plans, changes to SEA, transition planning, IEP consultation, alternative programming, Human Rights, etc.
iPad Training	Individual training offered by our Lead EA for SEA when iPads are delivered to schools. System LRTs also train individual teachers on the use of student-specific apps. Special training videos were also added this year and are available on the Special Education Professional Learning Environment in Brightspace for staff to access and learn from.
SEA Computer Training	Students who are receiving SEA computer technology for the first time are given training through LEARNStyle, the largest provider of assistive technology training in Ontario. Teachers are given the opportunity to participate in LEARNStyle training sessions, to further their own understanding of technology and how it applies to learning skills and learning styles. Special training sessions were added this year for Virtual Learning Academy teachers. Further, when students are trialing SEA computers, classroom teachers receive an individual consultation session with the SEA Teacher Technician to ensure that they understand the available software and strategies to embed the technology in the student's individualized classroom program.

Title	Description
Apple Collaborative Inquiry	Accessibility tools and apps on iPads can effectively reduce learning barriers for many students. iPads also offer effective teaching tools for staff use. Led by our Educational Technology Department and an Apple trainer, a group of special education staff including Coordinators, Teacher Consultants, Lead EAs, Teacher Technicians, CYWs, Psychological Consultants, SLPs, and CDAs participated in a Collaborative Inquiry to investigate how the iPad could support tasks specific to individual roles. The team met weekly to explore the tools and then bi-weekly and monthly to report back on implementation. The group eventually sub-divided into tool exploration and coaching strategies.
Academic Achievement Battery™ (AAB)	This two-part in-service on our educational assessment tool was delivered to new LRTs. Assessment administration, test interpretation, report writing, and storage of information were covered. Refresher sessions were also offered and open to all LRTs.
New Teacher Induction Program (NTIP) – Special Education Presentations	<p>A series of special education topics were offered to NTIP teachers for virtual attendance on a voluntary basis:</p> <ul style="list-style-type: none"> • How Do I Know When A Student Needs an IEP? • Following a Student Through Special Education • Self-Regulation • All About Alternative Programming • Understanding Anxiety and Grand Erie’s Tiered Approach to Mental Health • Promoting Healthy Relationships and Grand Erie’s Tiered Approach to Mental Health • So You Have A Student With Autism • Differentiating for High Ability Students
Topics in Response to School Requests	Administrators request professional development for their staff members on a regular basis, with training usually delivered at Staff Meetings or during smaller group sessions. Topics have included: Following A Student With A Learning Disability, Pathway to Modifications, SEA Process, Behaviour Data Tracking and BeSafe Plans, Moving Students Toward Independence, Structured Work Systems, Special Education Pathways in Secondary, Special Education in Grand Erie for VLA Teachers, etc.
Lexia	Lexia is a responsive online literacy intervention tool. The Core5 program can be used with students in grades K-5 who are struggling with literacy. The Power Up program is for students in grades 6 and up. The program covers phonemic awareness, phonics, grammar, vocabulary, and comprehension. Introductory, implementation, and refresher webinars were also offered to all classroom teachers and administrators. A webinar focusing on analysis of Lexia data and improving usage/engagement was also offered to principals.

Title	Description
TeachTown Basics and Transition to Adulthood	TeachTown offers a blend of computer-delivered and teacher-led ABA instruction proven to increase a student's vocabulary, listening skills, social-emotional development, independence, academics and cognitive skills. The system automatically adapts based on each individual's progress providing meaningful instruction to all students. This year we have offered TeachTown licenses to students working on alternative curriculum. Introductory, implementation, and coaching training sessions were offered to staff for both programs. Train the Trainer sessions were also offered to Teacher Consultants.

Ministry of Education (MOE)-Funded Autism Training: Online, self-paced courses created by the Geneva Centre for Autism and delivered via the online platform Sonderly. A variety of courses were offered to Educational Assistants, Teachers, and DECEs on topics including introduction to autism, Applied Behaviour Analysis (ABA), functional behaviour assessments, and supporting students with ASD in a play-based environment.

Enhanced Autism Training Program: Ministry-funded pilot project. 11 LRTs who work in schools with a self-contained ASD class participated by completing an online Geneva Centre for Autism course via the online platform Sonderly and consolidating their learning at a full-day live-session (virtual) facilitated by the Geneva Centre for Autism.

Training with regard to the Legislation and Ministry policy on Special Education:

The Board sends Special Education personnel (Superintendent, Principal-Leader, School and Program Supports Lead, Mental Health and Well-Being Lead, Program Coordinator, and Teacher Consultants) to in-services provided by the Ministry of Education on legislation, policy and new initiatives.

These people return to the Board and present the information detailed at the Ministry's in-service to Administrators, Special Education and regular class teachers and other board support personnel. All teachers, including new practitioners, are encouraged to attend. If staff have difficulty with implementation of policies, the Teacher Consultants-Special Education provide further training and support.

In addition, senior special education staff attends the Regional Special Education Council (RSEC) meetings three times per year. Counterparts from other boards in South-Western Ontario and representatives from the Ministry of Education discuss initiatives, share effective programs and services, and discuss emerging issues. The Mental Health and Wellness Lead attends provincial and regional meetings and workshops by School Mental Health ASSIST and Special Interest Groups. The Special Education Management Team attend applicable workshops on education, Special Education, Mental Health legislation provide by Osgoode Professional Development Centre.

Program Coordinator-Special Education and Special Education Teacher Consultants usually attend the Special Education Regional Coordinator/Consultant Conference (SERCC) which meets twice a year to discuss Ministry of Education initiatives, share effective programs and services and discuss emerging issues in Special Education. SERCC did not take place this year due to the ongoing COVID pandemic.

Budget allocation dedicated to the staff development plan in the area of Special Education:

There are a few components of the Staff Development Budget, which affect Special Education personnel:

- Special Education Teachers can access monies as dictated by their collective agreement and their school Professional Development Committees;
- Professional Student Support Services Staff have a budget determined by their collective agreement to attend conferences/training related to their role;
- CUPE staff also have a collective agreement determined PD amount intended to provide in-service for Special Education and other Support Staff by application to their Professional Development Committee;
- Coordinators and consultants responsible for Special Education can access funds to attend professional development;
- A percentage of total funds allocated for professional development is dedicated to Special

Education.

Cost-sharing arrangements for staff development with other ministries or agencies:

- Workshops by teleconference through Contact Brant (Ministry of Children, Community and Social Services);
- Regional Autism Forum - Ministry of Education;
- Job Readiness Training - NACL (Norfolk Association of Community Living);
- Early Child Development Centres and Launch Pads;
- Geneva Centre
- ASD, School Support Program-Hamilton Health Sciences;
- Transitional Aged Youth Protocol with Contact Brant
- Autism Spectrum Disorder summer training in London, in support of PPM 140
- LD@School Educators' Summer Institute

Standard 14: EQUIPMENT

The purpose of the standard is to inform the ministry, board staff members and other professionals, and parents about the provision of individualized equipment for some students with special needs.

Procedures for determining individualized equipment purchases for students to use at school comply with those outlined in the Ministry of Education document Special Education Funding Guidelines – Special Equipment Amount (SEA).

With the support of Teacher Consultants-Special Education, schools prepare a Special Equipment Amount (SEA) funding file for each individual student. Some types of equipment (Per Pupil) require approval from the SEA Approval Committee while others require an assessment (Claims Based) from a Speech-Language Pathologist or any other related health care professional or agency indicating that the student requires a specific piece of equipment.

Included in the file for non-computer (Claims-Based) equipment:

- letters of support from the professionals or organizations indicating that:
 - i) the equipment is essential / necessary to help the student benefit from instruction and,
 - ii) the disability that this device will assist with
 - iii) quotes from suppliers for the required equipment, and;
 - iv) a copy of the student's IEP identifying equipment and embedding the equipment in the accommodations and program expectations to provide evidence of intended use

Included in the file for computer (Per Pupil) equipment:

- evidence that the student is having difficulty accessing curriculum (report cards, educational assessment results, letters of support from the school)
- evidence that the student uses technology willingly and effectively on a regular basis (assistive technology log, work samples)
- a copy of the student's IEP identifying equipment and embedding the equipment in the accommodations and program expectations to provide evidence of intended use

Requisitions to order equipment can be processed prior to the completion of documentation for trial purposes or after the trial of equipment and documentation is complete. A copy of the requisition is placed in the SEA file. Once documentation is complete, files are submitted to the Program Coordinator, Special Education.

Information contained in the SEA files will be entered to a spreadsheet and submitted to the Area Office according to procedures and dates determined by the Ministry of Education.

Upon receipt of the SEA submissions, the Ministry may audit randomly selected files.

The Board assumes the first \$800.00 cost of non-computer equipment purchased for each student.

Not all SEA submissions are approved by the Ministry. The Board may assume the purchase costs of equipment deemed necessary for the student.

Other equipment related to student needs are personal protective equipment and alternate clothing necessary for the safety of staff. The list below indicates some of the required items:

Plexiglas face shields	Loose-fitting tops	Arm pads/gloves (cloth)
Uniforms/lab coats	Leg pads	Safety goggles
Wrist protection	Two-Way FM System	Torso protection

If purchased in significant quantities, some of the items noted above could be SEA fundable.

The Special Equipment Amount (SEA) provides funding to school boards to assist with the costs of equipment essential to support students with special needs, where the need for specific equipment is to provide students with access to the Ontario curriculum or a board-determined program and to attend school. Equipment purchased with SEA funding should be considered as a set of physical assets, which boards have a responsibility to protect, maintain, and manage as a public resource. Grand Erie has developed and follows internal operating policies and procedures regarding the purchase, repair, use and disposal of equipment purchased with SEA funding.

There are typically four types of equipment purchased with SEA funds on behalf of students:

1. assistive technology
2. adaptive technology/equipment
3. technology/equipment to support a hearing loss
4. sensory equipment

The Ministry of Education has recently allowed for the SEA Per-Pupil Amount to be used to purchase computer software that increases access to the Ontario curriculum, including reading intervention tools like Lexia.

Specialized training on the use of this equipment is also purchased with SEA funds when required.

School boards' responsibilities include ensuring that:

1. equipment is functioning properly and is meeting students' needs;
2. equipment is replaced as required, when students outgrow equipment or when equipment wears out through use;
3. upgrades and refurbishment are considered as an option before replacement;
4. equipment is reused by other students when no longer required by the student for whom it was purchased;
5. efforts are made to share equipment among several students when appropriate and possible;
6. policies are developed that provide board staff with direction on issues such as:
 - managing transfers between schools and boards;
 - use of equipment in students' home, in co-op placements, and in other program settings, including Section 23 classrooms;
 - staff training on use of SEA funded equipment;
 - inventory records;
 - documenting use of equipment in student's IEPs, where equipment is required to support the student;
7. reasonable efforts are made to acquire a fair market value when disposing of used equipment

Boards are required to internally allocate an adequate amount of additional funding to support the other costs associated with ensuring that all students who need equipment have access to appropriate equipment. These other costs include the \$800 per pupil deductible, the purchase of equipment that costs less than \$800 for students who require low cost items, on-going insurance costs, consumables such as batteries or paper for printouts , the cost of parts for upgrading or refurbishing equipment and staff costs for managing equipment purchasing, set-up, repairs, training and inspections.

Standard 15: ACCESSIBILITY OF SCHOOL BUILDINGS

The purpose of the standard is to provide the ministry with further details of the board's multi-year plan, which was previously submitted to the ministry, for improving accessibility for students with physical and sensory disabilities, and to provide the public with this information.

The Grand Erie District School Board has approved a multi-year capital expenditure plan for improving accessibility to its buildings, grounds and administrative offices, including resources dedicated to providing barrier-free access in the coming years. The Board's plan includes increasing accessibility to as many school buildings as possible and providing specific facilities to accommodate students with special needs. Accessibility upgrades are considered any time a renovation or addition is made to a building.

Each elementary Family of Schools (Brantford, Brant and Norfolk, Haldimand) has at least one school ranked at Level Three and another at Level 4.

Each secondary Family of Schools (Brantford/Brant, Haldimand-Norfolk) has at least one school ranked at Level Three and another at Level 4.

The criteria provided to rank buildings for each Level of Accessibility is as follows:

- Level One Building cannot be reasonably made accessible.
- Level Two Building is accessible, has some washroom modifications to accommodate wheelchairs and limited interior access.
- Level Three Building has complete access and washroom(s) can accommodate wheelchairs.
- Level Four Meets Level Three plus additional features to accommodate students who are medically fragile.

In addition, to qualify as Level Three the facility should have the following features:

- 'main' entrance convenient for drop off and is wheelchair accessible:
 - includes ramping and rails meeting Ontario Building Code specifications and power door operators on both the exterior and vestibule doors;
 - vestibule must also meet minimum distance requirements.
- all rooms (except stage) within the school are wheelchair accessible:
 - Level Three facilities will be reviewed for interior "hold open" devices;
 - budget costs will be provided to complete the work;
 - cost for each door device is approximately \$1000.
- at least one separate washroom or one male and one female washroom in the school will accommodate wheelchairs:
 - recommendation for future considerations that a separate washroom be designed to accommodate a change table, storage and other specialized equipment.

The Special Education Program Coordinator and Facilities Services Personnel meet as a team to review the suitability of school sites in meeting the needs of students with accessibility needs on a case by case basis.

In addition to the Accessibility Plan, school boards are also required to comply with the Accessibility for Ontarians with Disability Act (AODA) including the Customer Service Standard and the Integrated Accessibility Standards Regulation. The Grand Erie District School Board approved a Multi-Year Accessibility Plan which integrates the requirements of both the Ontarians with Disability Act and the AODA and addresses Employment, Communication and Information, and Transportation. Revisions to the Ontario Building Code related to accessibility for the Built Environment are implemented in all new buildings.

The Grand Erie DSB Accessibility Plan can be found on the Grand Erie DSB's website.

[Grand Erie DSB Multi-Year Accessibility Plan 2017-22](#)

Standard 16: TRANSPORTATION

The purpose of the standard is to provide details of the Board's transportation policies to the ministry and the public.

The following students with special needs are eligible for transportation:

- students with exceptionalities who would be unable to travel independently, due to a variety of reasons, to special class placement at their home school;
- students placed in a self-contained class which is not located in their home school;
- students with exceptionalities who would be unable to travel independently due to a variety of reasons to regular class placement will be determined on a case by case basis
- The provision of transportation for students with special education needs requiring a modified day or fresh start will be determined on a case by case basis
- Transportation services are currently being provided for students with the exceptionalities as noted below:
 - Behaviour;
 - Communication: *Autism, Deaf and Hard-of-Hearing, Speech & Language Impairment, Learning Disability;*
 - Intellectual: *Giftedness, Mild Intellectual Disability, and Developmental Disability;*
 - Physical: *Physical Disability, Blind and Low Vision;*
 - Multiple: *Multiple Exceptionalities;*
- A student's transportation is usually decided in discussions which follow the IPRC meeting. The Teacher Consultants-Special Education, in conjunction with the IPRC members and the parent(s), discuss the transportation needs. This is then noted on the IPRC Minutes Sheet;
- Transportation may be provided to a child/youth who is attending a care or treatment program if it is on an existing bus route. Transportation is not provided to/from a correctional facility or locations outside of the Board's district boundary;
- Transportation is provided to students who have been placed in a Provincial or Demonstration School through a system IPRC. Students may be transported on a daily, weekly or other basis to and from the school;
- Limited transportation is available for summer school. Currently students are required to congregate at specific locations.

Policy and Procedures were reviewed with respect to special transportation arrangements. The procedures are as follows:

- The School Principal will contact the Teacher Consultant-Special Education.
- The Teacher Consultant-Special Education will complete an "Individual Transportation Plan (ITP)" form in the LITE software system.
- The Principal Leader of Special Education receives an email notice that an Individual Transportation Plan has been submitted for approval.
- Once approved, by the Principal Leader of Special Education, the request is automatically emailed to Transportation Services.
- Transportation Services will contact the School Principal or designated Teacher Consultant for Special Education regarding the transportation arrangements to be implemented if additional information is required that is not listed on the ITP.

Safety criteria that are used by the Board in the tendering and selection of transportation providers for exceptional students are as follows:

- drivers must have emergency first aid certification and be able to meet the need(s) of the student they are providing service to, as per the ITP and any support plans which may accompany them.
- wheelchairs must be secured during transit.
- all buses require two-way communication
- Rider Aides will be assigned when required on a case by case basis

Standard 17: SPECIAL EDUCATION ADVISORY COMMITTEE

The purpose of the standard is to provide details of the operation of the Board's Special Education Advisory Committee (SEAC) to the ministry and to give the members of the public information to which they are entitled.

Names and Affiliations of Members and Contact Information

Chair:

Wendy Rose – Elected January 21, 2021

Vice-Chair:

Paula Boutis – Elected January 21, 2021

Local Agency Representatives:

Community Living Brant – Tara Buchanan, Supv of Employment Supports 519-753-6303, ext 441

Contact Brant – LeaAnn Boswell, Information Services Coordinator 519-758-8228, ext 228

Fetal Alcohol Spectrum Disorder – ONE – Dr. Louise Scott 519-414-9444

Haldimand-Norfolk R.E.A.C.H. – Alicia Csoff, Board of Directors 519-909-9193

Lansdowne Children's Centre -Lorraine DeJong, Social Worker 519-753-3153, ext 202

Woodview Mental Health and Autism Services – Amanda Detmar, Tele-Mental Health Coordinator 519-752-5308 ext. 137

Parents/Community Representatives:

Paula Boutis (Vice-Chair) 416-802-3118

Carol Brady 289-244-8743

Beth Bruce / Tammy Sault 905-768-3222

Michelle Carpenter 519-442-7209

Mike Gatopoulos 519-717-0874

Kathy Jones 519-586-8852

Wendy Rose (Chair) 519-448-1569

Joe Trovato 289- 218-7592

Tara Wilson 226-493-1111

Rochelle Winter 519-720-6778

Native Representative:

Lisa Nydam – Six Nations Representative 289-439-2968

Trustees:

Rita Collver) 519-582-4969

Tom Waldschmidt 519-442-2140

Alternates Brian Doyle 519-587-4268 and Carol Ann Sloat 519-757-0536

Staff:

Liana Thompson, Superintendent of Education 519-756-6306, ext. 281122

Paula Curran, SEAC Recording Secretary 519-756-6306, ext. 281173

Resource:

Julie White, Principal Leader – Special Education 519-756-6306, ext. 287214

Karin Mertins, School and Program Supports Lead - Special Education 519-756-6306, ext. 287219

Lesley Boudreault, Program Coordinator – Special Education 519-756-6306, ext. 287217

Piyali Bagchee – Mental Health and Wellness Lead 519-756-6306, ext. 287226

Lindsay Sheppard - Applied Behaviour Analysis Coordinator 519-756-6306, ext. 287227

What is SEAC?

- SEAC is an advisory committee mandated through the Education Act as a standing committee of each school board and governed by O. Reg. 464/97: Special Education Advisory Committees
- The committee reports to the school board and makes recommendations to the board regarding special education program and services.

Who is on SEAC?

- The SEAC of the Grand Erie District School Board is comprised of:
 - a) parents and other community representatives;
 - b) representatives of up to 12 local chapters of associations which further the interests of people with exceptional needs;
 - c) at least one person representing the interests of Native Students; and
 - d) board personnel who act as a resource to the committee

How are SEAC Members selected?

- The term of members of the committee shall be the same as the term of the Board of Trustees
- In September of an election year, the Superintendent of Education with responsibility for Special Education shall commence a recruitment process for a new roster of SEAC members.
- Current members in good standing will be asked to confirm their commitment to SEAC.
- If a full complement is not achieved from current members, the Communications department will place ads on the board's website and in selected media inviting interested persons to submit a letter of intention to the SEAC Chair.
- All current SEAC members will be involved in this process and the Committee will submit a proposed roster to the board of Trustees for approval by the November Board meeting

What does SEAC do?

- A special education advisory committee of a board may make recommendations to the board in respect of any matter affecting the establishment, development and delivery of special education programs and services for exceptional pupils of the board.

When does SEAC meet?

- SEAC meetings are held on a monthly basis, with a minimum of ten meetings per school year.
- The meetings begin at 6:00 p.m. either virtually through an electronic meeting application or at the Education Centre, 349 Erie Avenue, Brantford, and are open to the public.

Thursday, September 17, 2020	Thursday, February 18, 2021
Thursday, October 15, 2020	Thursday, March 11, 2021
Thursday, November 19, 2020	Thursday, April 22, 2021
Thursday, December 17, 2020	Thursday, May 20, 2021
Thursday, January 21, 2021	Thursday, June 17, 2021

How SEAC Fulfilled its Role and Responsibilities:

Public Consultation

The Grand Erie District School Board values collaboration with families and community members.

What was done –

- A banner was placed on the Grand Erie DSB main webpage reminding the public to provide input through the survey which is linked to the Special Education Plan.
- School Administrators were asked to ensure parents are aware of the survey and encouraged to participate.

Making Recommendations to the Board

With respect to any matter affecting the establishment, development, and delivery of special education programs and services for exceptional students within the board:

What was done –

- Members received presentation on programs and services resulting in discussions.
- Members received presentation on special education budgets and invitation to present suggestions for increases or reductions on certain line items.

Participating in the Board's Annual Review of the Special Education Plan:

What was done –

Consultation with the Special Education Advisory Committee

To meet the requirements of Regulation 464/97, the Grand Erie District School Board has ensured that its Special Education Advisory Committee has participated in the Board's Annual Review of its Special Education Plan guided by Regulation 306 of the Revised Regulations of Ontario (1990). Involvement has included:

- ongoing discussion at SEAC meetings throughout the 2020-21 school year;
- presentations on programs and services provided for students with special needs;
- opportunity for input through an online survey link on the Grand Erie District School Board website;

September 18, 2020

- Summer School Transition Program - Presentation
- SEA Summer Camps - Presentation
- Summer Support for Vulnerable Students and Families - Presentation
- Special Education and Grand Erie's Virtual Academy - Presentation
- Consultation – SO31 Accessibility - Review
- Learner Intervention Tracking for Excellence (LITE) – Presentation

October 15, 2020

- Rick Hansen Foundation – School Partnership Initiative – Presentation
- Annual Update – Multi-Year Accessibility Plan 2017-22 – Presentation
- Standard 14 – Equipment – Review

November 19, 2020

- Standard 4 – Early Identification Procedures and Interventions Strategies - Review

- C-CAT Data 2019-20 – Presentation
- 2019-20 Grand Erie's Student Achievement Plan: Success for Every Student – Outcomes Report for Students with Special Education Needs – Presentation
- 2020-21 Grand Erie's Plan for Student Achievement and Well-Being: Success for Every Student – Presentation

December 17, 2020

- Suspension, Expulsion, Exclusion Report for Students with Special Education Needs 2019-20 – Presentation
- Shanker and Hopkins Self-Regulation Professional Development – Presentation
- SEAC Orientation Guide – Review
- October 31, 2020 OnSIS Data for Students with Special Education Needs – Presentation
- Special Education Self-Contained Planning 2021-2022 – Presentation

January 21, 2021

- 2021-21 Special Education Budget Process – Presentation
- Standard 10 – Individual Education Plans including Appendix G – IEP - Review
- Accessibility Awareness Month Update – Presentation
- Update with Respect to Special Education During Further School Closures – Presentation

February 18, 2021

- Grand Erie's Virtual Academy – SEAC Input - Review
- Standard 2 – The Board's General Model for Special Education – Review

March 11, 2021

- C-CAT Administration 2020-21 – Presentation
- EQAO Grade 9 Math Assessment and OSSLT Assistive Technology Limitations – Presentation
- Bylaw 8 – Committees of the Board, Draft SEAC Terms of Reference - Review
- Educational Assistant (EA) Allocation Process – Presentation
- Right to Read Inquiry - – Presentation

April 22, 2021

- A Day in the Life of the Child and Youth Worker – Presentation
- Summer School Programming for Students with Special Education Needs – Presentation
- Draft Grand Erie's Special Education Plan – 2020-21 - Review
- EA Allocation 2021-22 – Draft Board Report – Presentation
- Summer School Programming for Students with Special Education Needs – Presentation
- Draft Grand Erie's Special Education Plan – 2020-21 - Review
- EA Allocation 2021-22 – Draft Board Report – Presentation

May 20, 2021

Final Draft of the 2020-21 Special Education Plan – Review and carried the motion “THAT SEAC recommends the Board approve the Special Education Plan for submission to the Ministry and uploading to the Board's website.”

- Introduction to Robin Staats – System Principal Leader of Indigenous Education and Equity – Presentation
- Introduction to Lisa Nydam – Native Representative to SEAC - Presentation
- A Day in the Life of the Behaviour Counsellor - Presentation

June 17, 2021

Participating in the Development of the Board's Annual Budget for Special Education:

What was done -

February 18, 2021

- Budget Definitions and Input into the 2021-22 Budget Process - Review

March 11, 2021

- Budget – SEAC Input Activity – Case Study

Reviewing the Financial Statements of the Board as they Relate to Special Education:

What was done –

September 18, 2020

- Special Education Funding for COVID-19 Supports - Presentation

January 21, 2021

- Financial Update Special Education Grants, Expenditures & Reserves 2020-21 – Presentation
- 2021-21 Special Education Budget Process – Presentation

June 17, 2021

Members reviewed the draft Special Education budget proposal.

Grand Erie Financial Statements are available on our website.

https://www.granderie.ca/application/files/6515/7408/9582/Final_Financials_2019_GEDSB.pdf

Contacting SEAC for Membership or to Express a View:

Parents, community members, or members of local associations wishing representation on SEAC or wishing to express their views on a special education topic should contact Wendy Rose, the SEAC Chair at dee.rose@me.com

Questions Related to Special Education Services or Programs:

Principal Leader of Special Education (Services) 519-756-6306, ext. 287214

OR

Program Coordinator of Special Education (Programs) 519-756-6306, ext. 287217

SEAC Terms of Reference:

Terms of Reference for SEAC were approved by the Board in January 2018 and are contained in pages 4-7 of [ByLaw 8 Committees of the Board](#).

Standard 18: CO-ORDINATION OF SERVICES WITH OTHER MINISTRIES OR AGENCIES

The purpose of the standard is to provide the ministry and the public with details of the board's strategies to ensure a smooth transition for students with special needs who are entering or leaving a school.

Transition Planning Process

The process for advance planning for students with special needs who are arriving from other programs is outlined as follows:

- i) For students entering school for the first time, intake meetings are scheduled in the Spring for students entering Grand Erie in September of that year. For students entering school at any other time during the school year, the outside agency contacts the Program Coordinator of Special Education or Teacher Consultant-Special Education to arrange a meeting. The content of the meetings provides a brief overview of students entering Grand Erie. From the information obtained in the meetings, the Teacher Consultants-Special Education are able to determine placements within the Board which will meet the child's needs.
- ii) Individual case conferences are held at the home school for students with high needs. The parent/guardians, agency staff, and the school staff are present. Teacher Consultants Special Education, Community agency staff, etc. may also be invited to attend. Specific information such as school placements, equipment needs, and any other relevant information is discussed.
- iii) For students with fewer special needs, individual case conferences will be scheduled at the request of the parent/guardians or agency. These will also be held at the school. School administrators, LRT's Special Education and classroom teachers will participate in the meeting.
- iv) The process for students with special needs who are arriving from a care, treatment, correctional or other board programs is as follows:
 - Care and Treatment Facility staff contacts school who notifies Teacher Consultant-Special Education.
 - Obtain signed parent/guardian consent for exchange of information.
 - A case conference will be initiated by Grand Erie staff or a referral agency. It may include the following board personnel: Teacher Consultant-Special Education, School Administrator and Special Education staff or classroom teacher and other appropriate system personnel. Parent/guardians and agency personnel may also be in attendance. Information which is relevant to the student's successful transition to school will be discussed including supports required, Special Education Amount, Special Education Amount (SEA) claims, the Individual Education Plan (IEP), medical or health/safety issues and other relevant information. A transition plan will be developed by system personnel. Minutes of the case conference will be taken and forwarded to the parent/guardians and a representative from the agency or board.
 - Further case conferences may be required to monitor the student's transition to school.

Sharing of information to support the transition from Pre-School Speech and Language Services (PSL) to School Speech and Language Services (SLS) for students entering their Senior Kindergarten year in September, involves meetings between Speech-Language Pathologists in May/June of the Junior Kindergarten year after the informed consent of the parent/guardian has been obtained. PSL providers provide a written copy of the most recent assessment report along with recommendations to school principals in the fall, so that discussions and referrals can be made at the Resource Team. Service cut off dates for Junior Kindergarten aged students are different for the Brant County Speech and Language Program than they are for the Haldimand-Norfolk Speech and Language Program. This information is received by Grand Erie and shared in a variety of ways with parents and school staff.

The Board has developed an “Early School Transition for Students with Special Needs” document for students with developmental disabilities, autism/PDD and other exceptionalities to facilitate a smooth transition into school. The Special Education Program Support Team has also developed a “Transitions Guide for School Teams” document that can support staff to facilitate smooth transitions for a variety of situations where students may be moving from one setting to another. Grand Erie participates in parent information sessions called “Parents as Partners” with Lansdowne, Haldimand-Norfolk R.E.A.C.H., and the Brant Haldimand Norfolk Catholic District School Board to assist with school entry for students with special education needs.

Grand Erie also works closely with various community agencies (e.g. Contact Brant, Contact Haldimand-Norfolk, Haldimand-Norfolk R.E.A.C.H., St. Leonard’s, Woodview), regarding students transitioning to or from schools.

Protocols have been developed with the following outside agencies to clarify roles and responsibilities:

- Child Welfare Agencies Autism Support Services
- Hamilton-Niagara Regional Autism Intervention Program
- Six Nations Tragic Events Response Team
- Violence Threat Risk Assessment Protocol
- Police and School Board Protocol
- Partnering Together for Healthy Schools Protocol

The Board’s Procedure addressing partnership development (SO108: “Community Service Providers and Schools Working Together”) continues to be implemented with community partners annually.

Outside Assessment Reports

Reports prepared by other professionals outside the Board are reviewed to determine what information provided helps delineate a student’s learning needs, strengths or problems and how it can be used for the improvement of instruction within a school context and in accordance with the *Education Act*, (R.S.O. 1990, S.226(2)). Where this information differs from data collected at the school, discussions at the Resource Team determine how best to proceed. There is no requirement that assessments or reassessments must be conducted by Board personnel (i.e. reports are “transportable”). Allocation of educational resources and educational programming decisions remain the responsibility of school/system staff.

Transitions to Out of Board Programs

When students leave this system to attend programs offered by other school boards or programs in care, treatment and correctional facilities, information is shared in the following ways, with *written and informed parental/guardian consent*:

- the Teacher Consultant-Special Education, School Administrator, LRT or special class teacher will contact the School Board or agency to establish a contact person from within our Board. A copy of the signed parental consent form giving staff permission to share information will be forwarded to the facility;
- the contact person will communicate with the School Board or agency to confirm information that may be required, the dates and personnel required to attend case conferences, etc.;

Staff Supporting Transitions

Board personnel ensuring the successful admission or transfer of students from one program to another may be one or a combination of the following:

- Teacher Consultant-Special Education
- School Administrator
- regular classroom teacher
- Learning Resource Teacher (LRT)
- special class teacher
- other board support personnel such as Social Workers, Child and Youth Workers, Behaviour Counsellors, Board Certified Behaviour Analysts, Speech-Language Pathologists, Psychological Associates/Psycho-Educational Consultants and Lead Educational Assistant

Successful transition will also require parent/guardian commitment, collaboration and support

If the student is transferring to a program outside our Board, successful transition may require some involvement from the individuals as noted above. However, the agency or board where the student will be in attendance will need to implement a transition plan based on the information supplied by Board personnel.

Community Partnership Planning

Grand Erie staff represents the board at several community planning committees and initiatives including: Children's Services Committee (Brant); Child and Youth Planning Network (Brant and Haldimand-Norfolk); Joint Protocol for Student Achievement; Brant Suicide Prevention Committee; Suicide Prevention Network of Haldimand-Norfolk, and Case Resolution, which bring together agencies, ministries and school boards to consider common interests.

Grand Erie continues to implement SO108 Community Service Providers and Schools Working Together. This allows for a better understanding of community services, facilitates communication and collaboration between community agencies and the school board, and increases access to mental health services with a school setting. Partnerships continue to be reviewed annually with the community partner.

Standard 19 - SUBMISSION AND AVAILABILITY OF THE PLAN

Each board is required to make its special education plan available to the public at the same time it submits the plan to the ministry. The board must inform the public in a variety of ways how to access the plan.

Two copies of the special education plan approved by the school board, and any amendments must be forwarded to the local district office of the Ministry of Education. The complete plan must be submitted along with the following documents:

- A letter from the director of the school board that confirms that the school board's special education plan is being submitted in compliance with the requirements of Regulation 306 and of the Standard's for School Boards' Special Education Plans;
- a copy of the board's motion approval of the plan, including the date of the approval; and
- a copy of any related motions or recommendations from SEAC

At the April 22, 2021 meeting the Special Education Advisory Committee received the first draft version of the Special Education Plan.

On May 20, 2021 the Special Education Advisory Committee passed the following motions:

"THAT SEAC recommends the Board approve the Special Education Plan for submission to the Ministry and uploading to the Board's website."

On May 31, 2021 the Grand Erie District School Board passed the following motion:

"THAT the Grand Erie District School Board approve the Annual Review of the Special Education Plan, and the submission of two copies of the plan and the Special Education Report Components Checklist to the Regional Office of the Ministry of Education by July 31, 2021."

In accordance with the Ministry of Education "Special Education Plans and Reporting Requirements on the Provision of Special Education Programs and Services", the 2020-21 Special Education checklist will be signed by Ms. J. Roberto, Director of Education and Secretary of the Grand Erie District School Board and will be submitted to the London Regional Office of the Ministry of Education with two copies of the 2020-21 Special Education Plan. The checklist confirms that the School Board's Special Education Plan has been updated and posted to the Board's website. The posted Plan continues to be compliant with the requirements of Regulation 306 and the policy document Standards for School Boards' Special Education Plans.

The Board's Annual Review of the Special Education Plan will be available to the public at the same time the checklist is submitted to the Ministry.

The public will be informed through Board minutes, School Principals, School Councils, SEAC members and the website on how to access the Plan.

The 2020-21 Special Education Plan will be available through the Board's website:
<http://www.granderie.ca/board/elementary/special-education>

A copy of any related motions or recommendations from the Board's Special Education Advisory Committee will also be submitted.

The following recommendations from SEAC were made to the board during the 2020-21 school year.

APPENDICES TABLE OF CONTENTS

Appendix A	83
Grand Erie's Multi-Year Plan Goals Achievement Plan: Success for Every Student 2020-2021	
Appendix B.....	84
School Team – Resource Team Process	
Appendix C	85
Student Profile Sample	
Appendix D	88
Kindergarten Home Connection Form	
Appendix E	90
Parents' Guide to Special Education – Identification, Placement and Review (IPRC)	
Appendix F	93
Parents' Guide to Special Education – Individual Education Plan (IEP)	
Appendix G	95
IEP Template	
Appendix H	100
General and Special Education Acronyms and Abbreviations	
Appendix I.....	105
Consent for Disclosure and Collection of Information	



Grand Erie’s Plan for Student Achievement and Well-Being:

Success for Every Student 2020-21

Multi-Year Plan Goals

- Increase staff understanding of effective instruction and assessment in literacy and numeracy
- Increase student understanding of effective learning strategies and how to use them
- Create and promote an enabling environment where all students can participate fully in their education.

Theory of Change

If students’ most urgent learning needs are identified and responsive strategies are implemented, then students will demonstrate improvement with their achievement.

Where Are We Now?

Needs Assessment Findings

Our focus will be to recognize overarching conceptual understandings across the strands to deepen our knowledge of spatial, proportional, and algebraic reasoning. Social emotional learning skills continue to need to be developed to help students develop confidence, cope with challenges and think critically. Students need to see themselves as capable and confident learners of mathematics.

Feedback from educators about their learning needs shows that professional learning at the system and school level should give educators the knowledge and skills to assess individual student needs and provide responsive, differentiated mathematics instruction. This provides opportunities for all students to understand mathematical concepts and processes that lay the foundation for problem-solving. Further findings indicate Grand Erie staff continue to seek to learn and acquire strategies to promote and support student mental health, productive disposition and well-being, while maintaining high expectations for mathematics achievement in the classroom.

Individual student learning gaps will continue to be identified and addressed with a continued focus on differentiated instruction and assessment in literacy. This focus enables students to develop explicit and implicit meaning in their reading and writing skills that are necessary to be successful in working towards the completion of the literacy credential required for graduation.

Feedback from educators about their learning needs shows that professional learning at the system and school level should give educators the skills to assess individual student needs and provide responsive differentiated literacy instruction.

How Did We Do?

K-12

Percentage of Grade 3 & 6 students achieving level 3 or 4 in Reading, Writing and Oral Language on report cards.

Percentage of Grade 3 & 6 students achieving level 3 or 4 in Mathematics on report cards.

Percentage of Grade 7 & 8 students achieving level 3 or 4 in Mathematics on report cards.

Percentage of students in Grade 10 Applied English achieving the Literacy Graduation Requirement on the Grade 10 OSSLT.

Percentage of students achieving 6/8 and 8/8 credits by the end of Grade 9.

Percentage of students achieving 12/16 and 16/16 credits by the end of Grade 10.

Monitor and measure the impact of the continued focus on tiered supports and strategies.

Monitor and measure the impact of the implementation of evidence-based Social-Emotional Learning programs on student well-being and achievement.

Narrative Data

School Effectiveness Framework Components & Indicators: 4.1 - A culture of high expectations supports the belief that all students can learn, progress and achieve.

1.1 - Assessment is connected to the curriculum, collaboratively developed by educators and used to inform next steps in learning and instruction.

How Will We Get There?

Professional, and Collaborative Learning – Superintendents and Central Teams will support/guide Principals and their multi-disciplinary teams through learning about and implementation of curriculum; supports, tools and resources to use effective differentiated instruction; ongoing assessment and reflection on student responses to instruction and feedback.

Mathematics Support for Ministry Identified Schools—The Principal Leaders, K-12 Board Math Lead; Board Math Facilitators; Elementary Consultants; and Secondary Math Facilitator will support elementary educators and Grade 9 Applied Teachers with their learning and implementation.

Principal and school multi-disciplinary learn teams will implement and, access additional resources to build instructional capacity. Principals and teachers will implement effective differentiated classroom instruction and assessment to meet individual student learning.

Wrap-around Support Staff will work directly with educators and students to build capacity in mental health literacy and social-emotional well-being.

Individual student needs: In maintaining and striving for high expectations in achievement and well-being for all learners, wrap around supports are provided to decrease barriers, in response to student needs.

How Will We Know?

The focus is on improved mathematics achievement. All of the following practices are expected to be evident for school based literacy achievement.

Educators implement effective differentiated instructional and assessment practices in a tiered response to individual student needs, supported by the leadership of the Principal.

Schools will be supported by system and principal leadership so that educators will effectively differentiate and accommodate instruction and assessment to meet needs identified in student profiles.

Staff members will develop skills in mental health literacy and an awareness of their own mental health.

Students know when to access and use calming strategies for their own emotional well-being.

How Are We Doing?

System

Family of Schools Superintendent and System Multi-Disciplinary Teams Learning Observations; Conversations.

Schools

Principal observations and reflections of instructional practice solicited throughout the implementation of strategies and the impact at the student level.

Evidence of teacher knowledge/skills/confidence/support for implementation in a variety of forms (reflections, observations, responsive actions, portfolios, professional dialogue and teacher surveys).

Principal and teacher dialogue and feedforward regarding taking initiative for implementation of their own professional learning goals and growth.

Evidence of continued implementation of Tier 1 interventions and classroom-based strategies before accessing outside supports.

Classroom

Triangulated student evidence in a variety of forms (observation, conversation, and products).

Students demonstrate social emotional learning skills that lead them to see themselves as capable and confident learners that cope with challenges and think creatively

Evidence of implementation of Tier 1 strategies to support Universal Design for Learning and the full participation of all students.

The Pre-Referral Process

The Classroom Educator Notices a Concern

- Observations
- Ontario Student Record Data
- Checklists
- Assessments
- Input from previous teachers, other educators, including LRT
- Parent Information and Input
- Check re vision and hearing, other medical.

Referral to Student Support Services

Once the **RT** has determined that all the recommended in-school strategies and approaches have been exhausted, and the concern still remains, the **RT** may recommend a referral to Student Support Services Personnel, with parent/guardian consent.

Referrals to access Grand Erie Student Support Services through LITE require consultation with and approval by the Teacher Consultant-Special Education.

Classroom Educator implements differentiated instruction and assessment to promote learning. Educator evaluates effectiveness of Tier 1 strategies.

New strategies are implemented and evaluated. Action plans are documented in the **Student Profile (LITE)**. If concerns continue, the teacher seeks assistance from the **School Team (ST)**. Parent is consulted and consents. Parent may also be invited to attend the **ST** meeting.

Resource Team (RT) reviews relevant data, provides input on efficacy of current strategies, and recommends differentiation, Tier 2 or 3 interventions and/or instructional strategies.

Out-of-Board supports may be recommended to parents, (i.e. medical follow-up, community agency involvement). Parent is consulted and consents. The **RT** may also recommend that an **Individual Education Plan** be developed.

School Team (ST) – includes Principal, LRT, Classroom Educator(s), CYW

- Sharing of concerns, data and observations
- Strategizing / problem-solving
- Further Tier 1 suggestions and planning
- Individualized assessments (i.e. AAB)
- Consultation with System LRT/Lead EA.

Resource Team (RT) – includes Principal, LRT, Teacher Consultant-Special Education, Classroom Educator if required and Grand Erie Multi-Disciplinary System Support Staff (as appropriate)

School Team (ST) provides more detailed assessment information and recommends individualized in-school interventions. A case conference with parents and other relevant staff is held if necessary.

A **Student Profile (LITE)** is initiated to track and document strategies. **ST** may seek further information from the **Resource Team (RT)**, when the **ST** believes that all accommodations and in-school support have been exhausted and wishes to discuss additional Tier 1 strategies and options for Tier 2 or 3 supports.

Parent is consulted and consents throughout.



Grand Erie District School Board
349 Erie Avenue, Brantford, Ontario N3T 5V3

STUDENT PROFILE SUPPORT FORM - 28-Sep-2017

Name Last Name, First Name **OEN** 000000000 **Board Id #** 000000000 **Grade** 8
School School Name **Family** Teacher Consultant **DOB** dd-mmm-yyyy **Gender** F

Exceptional Student

Yes ☐ No ☒

Teacher

Miss Teacher

Credits Accumulated

Sources Of Information		Reason For Student Profile	
(Select a date when a source has been reviewed or a new assessment completed)		Student has struggled to meet grade level expectations throughout her school career and has a non-identified accommodated IEP. Strategies need to be implemented as she makes the transition to secondary school.	
<input checked="" type="checkbox"/> Consultation with Parents	Date 26-Sep-2017	Referral for <input type="radio"/> School Team <input checked="" type="radio"/> Resource Team Date 05-Oct-2017	
<input checked="" type="checkbox"/> Consultation with previous Teachers	Date 27-Sep-2017		
<input checked="" type="checkbox"/> Report Card Printout (attached)	Date 27-Sep-2017		
<input checked="" type="checkbox"/> Review of OSR	Date 19-Sep-2017		

Strengths

- Oral communication skills
- Computer skills
- Kinesthetic learner

Needs

- Attempt new learning/opportunities
- Attention concentration skills
- Independent work habits
- Reading - Comprehension
- Express needs effectively
- Self-advocacy skills

Instructional Accommodations

- access to computer
- more frequent breaks
- organizational coaching
- cueing/prompting

Environmental Accommodations

- oral reporting
- minimize distractions
- alternative work space
- proximity to instructor

Assessment Accommodations

- access to computer for written work
- alternate to written tests and exams
- ask student to only write main points then expand verbally
- chunk time of assessment
- extra time to respond
- more frequent breaks

Educational Assessments

Type	Date	Summary of Results
AAB - Academic Achievement Battery	20-Apr-2016	All subtests scored in the Average range, except Reading Comprehension, which was Low Average.

Clinical Assessments

Type	Date	Summary of Results
Medical Report	17-Feb-2012	She has a diagnosis of ADHD.

Program Goals

- To develop self-advocacy skills so that she will request assistance as needed.
- To develop the self-confidence to take risks in new learning opportunities.
- To develop independent work habits and task completion skills.

Student Details

- Outside Agency Involvement (list/indicate Agency below)
- IEP with Accommodations
- System Supports in Place (i.e. Social Work, Behaviour Counsellor)

At Risk/In Risk Characteristics

- Low academic performance (level 1 or lower) in Language

Personal, Organizational, and Social Strengths

- Cooperation
- Technology Skills

Learning Style

- Kinesthetic Learner
- Sequential Learner

Challenges

- Lack of self confidence



Grand Erie District School Board
349 Erie Avenue, Brantford, Ontario N3T 5V3

-Arrives unprepared for class

Pathway Recommendation

-Applied/College Program

Secondary Accommodations Recommended

-Peer Mentor
-Learning Strategies Course

Additional Information

Has support from Woodview counsellor, Ms. Counsellor.

Sample



Grand Erie District School Board
349 Erie Avenue, Brantford, Ontario N3T 5V3

Last Name, First Name
Appendix C

STUDENT PROFILE SUPPORT FORM - 28-Sep-2017 (Continued)

Name	Last Name, First Name	OEN	000000000	Board Id #	000000000	Grade	3
School	School Name	Family	Teacher Consultant	DOB	dd-mmm-yyyy	Gender	FEMALE

Student Profile Activity Log

Date	Summary of Meeting Minutes/Strategies/Effectiveness/Next Steps	Type of Meeting (IST, RT, Case Conference, Parent/Teacher etc.) Attendees
14-Sep-2017	Referral to CYW to work on self-advocacy strategies and to develop confidence to take risks and attempt new learning opportunities. This will be important as she transitions to secondary school next year.	RT

Sample

Elementary Program

Kindergarten Home Connection Form

Dear Parent/Guardian,

Please complete the following form to help us get to know your Kindergarten child. Please return this form by the (second week of school – insert date).

CHILD'S NAME

_____ Surname	_____ First Name	_____ Name Used
------------------	---------------------	--------------------

1. My child's strongest skills and best qualities are:

2. Is there anything about your child's preschool development (sitting, creeping, walking, talking) that you think we should know?

3. Does your child have allergies, sensitivities or food intolerances? Please elaborate.

4. Do you have any concerns about your child's vision / hearing / speech? Please elaborate.

5. What previous group experiences has your child had (e.g., YM-YWCA Program, Daycare, Library Story Hour, Early ON Centres, recreational activities, etc.)

6. What types of activities does your child enjoy most? (e.g., building, listening to stories/looking at books, games, toys, imaginative play, indoor/outdoor play.)

7. Are there traditions that are important to ***your*** family?

8. Is there anything else we need to know about your child to make their entry into school more successful? (e.g., first child in kindergarten, siblings, name of before/after school care provider, etc.)

PARENT/GUARDIAN CONSENT

I consent to the use of the personal information by all school board employees, contained herein, on a need to know basis, and who may be involved in my child's educational program.

Signature of Parent / Guardian

Date

If the I.P.R.C. has identified your child as an exceptional pupil and you have agreed with the I.P.R.C. identification and placement decision, the Board will promptly notify the principal of the school at which the special education program is to be provided of the need to develop an Individual Education Plan (I.E.P.) for your child.

What about reviewing the I.P.R.C.?

A review meeting will be held within one year unless the parent notifies the principal in writing that they wish to waive the annual review. The parent may request a review meeting at any time after a placement has been in effect for three months but the request may not be made more often than once in every three month period.

This review will consider the same types of information that were originally considered. With your written permission (request for review), the I.P.R.C. conducting the review will consider the progress your child has made in relation to the I.E.P. The I.P.R.C. will review the placement and identification decisions and decide whether they should continue or whether a different decision should now be made.

What can parents do if they disagree with the I.P.R.C. decision?

If you do not agree with either the identification or placement decision made by the I.P.R.C., you may

- within 15 days of receipt of the decision, request that the I.P.R.C. hold a second meeting to discuss your concerns; or
- within 30 days of receipt of the decision, file a notice of appeal with the Grand Erie District School Board.

If you do not agree with the decision after the second meeting, you may file a notice of appeal within 15 days of your receipt of the decision. If you do not consent to the I.P.R.C. decision and you do not appeal it, the Board will instruct the principal to implement the I.P.R.C. decision.

How do I appeal an IPRC decision?

If you disagree with the I.P.R.C.'s identification of your child as exceptional or with the placement decision of the I.P.R.C., you may, within 30 days of receipt of the original decision or within 15 days of receipt of the decision from the second meeting described above, give written notification of your intention to appeal the decision to the Grand Erie District School Board.

The notice of appeal must indicate the decision with which you disagree and include a statement that sets out your reasons for disagreeing.

What organizations are available to assist parents?

- [Association for Bright Children of Ontario](#)
- [Association for Community Living](#)
- [Autism Society of Ontario](#)
- [Canadian Hearing Services](#)
- [Down Syndrome Association of Ontario](#)
- [Tourette Syndrome Association of Canada](#)

Where can parents obtain additional information?

- the school principal
- [the Grand Erie District School Board](#)

Superintendent of Special Education Services
(519) 756-6301

PARENTS' GUIDE TO SPECIAL EDUCATION Identification, Placement and Review Committee



**GRAND ERIE
DISTRICT SCHOOL BOARD**

Exceptional Pupils and Special Programs

Who is an exceptional pupil?

The Education Act defines an exceptional pupil as “a pupil whose behavioural, communicational, intellectual, physical or multiple exceptionalities are such that he or she is considered to need placement in a special education program”.

Who decides that a pupil is exceptional?

The identification is made by a Board-appointed Identification, Placement and Review Committee. For ease of reference this Committee is known as an I.P.R.C. They will

- identify if your child is an “exceptional pupil” based on the above categories;
- determine the placement or setting in which your child’s special education program will be delivered;
- review that placement at least once a year.

What is a special education program?

A special education program is a program that

- is based on and modified by the results of continuous assessment and evaluation;
- includes an Individual Education Plan (I.E.P.) containing specific objectives and an outline of educational services that meet the needs of the exceptional pupil.

What placements are offered?

Special education programs are designed for the individual and will be carried out in the regular classroom setting with special services brought to the child. At times, the student may be withdrawn for part of the day. A small percentage of exceptional pupils may require specialized class settings on a full or part-time basis.

How is an IPRC requested?

The principal of your child’s school

- must request an I.P.R.C. meeting for your child upon receiving your written request;
- may, with written notice to you, refer your child to an I.P.R.C. when the principal and the child’s teacher(s) believe that your child may benefit from a special education program.

Within 15 days of receiving your request, or giving you notice, the principal must provide you with a copy of this guide and a written statement of approximately when the I.P.R.C. will meet.

May parents attend the IPRC meeting?

Regulation 181/98 entitles parents and pupils, 16 years of age or older, to be present at and participate in all Committee discussions about your child, and to be present when the Committee’s identification and placement decisions are made.

Who else may attend an IPRC meeting?

- the principal of your child’s school;
- other resource people such as your child’s teacher, special education staff, board support staff or the representative of an agency who may provide further information or clarification;
- your representative, that is, a person who may support you or speak on behalf of you or your child;
- an interpreter, if one is required.

What information will parents receive about the IPRC meeting?

At least 10 days prior to the meeting, the Chair of the I.P.R.C. will provide you with written notification of the date, time and place of the meeting and an invitation to attend. You are an important partner in considering your child’s placement. This letter will also ask you to indicate whether or not you will attend.

Before the I.P.R.C. meeting occurs, you will receive a written copy of any information about your child that the Chair of the I.P.R.C. has received. This may include the results of assessments or a summary of information.

What happens at an I.P.R.C. meeting?

The Chair introduces everyone and explains the purpose of the meeting. The Committee will review all available information about your child and may discuss any proposal that has been made about a special education program or special education services for the child.

You are encouraged to ask questions and join in the discussion. Following the discussion, after all the information has been presented and considered, the Committee will make its decisions.

What will the I.P.R.C.’s written statement of decision include?

- whether the I.P.R.C. has identified your child as “exceptional”;
- the categories and definitions of any exceptionalities identified;
- a description of your child’s strengths and needs;
- the I.P.R.C. placement decision;
- the I.P.R.C.’s recommendations, if any, regarding a special education program and special education services
- the reasons for the decision that the pupil should be placed in a special education class, if applicable.

What happens after the I.P.R.C. has made its decision?

If you agree with the I.P.R.C. decision, you will be asked to indicate, by signing your name, that you agree with the identification and placement decisions.

Ministry of Education Provincial and Demonstration Schools

The ministry operates provincial and demonstration schools throughout Ontario for deaf, blind, deaf-blind, and severely learning-disabled students, as well as those with attention deficit hyper-activity disorder (ADHD). Residential programs are offered at the schools Monday to Friday, for students who live too far from school to travel daily.

School for the Blind and Deaf-Blind

[W. Ross Macdonald School](#)

350 Brant Avenue
Brantford, ON N3T 3J9
(519) 759-0730

Schools for the Deaf

[Ernest C. Drury School](#)

255 Ontario Street, South
Milton, ON L9T 2M5
(905) 878-2851
TTY: (905) 878-7195

[Robarts School](#)

1090 Highbury Avenue
London, ON N5Y 4V9
(519) 453-4400 [TTY same]

[Sir James Whitney School](#)

350 Dundas Street, West
Belleville, ON K8P 1B2
(613) 967-2823 [TTY same]

Schools for Students with ADHD and Severe Learning Disabilities

[Amethyst School](#)

1090 Highbury Avenue
London, ON N5Y 4V9
(519) 443-4408

Schools for Students with ADHD and Severe Learning Disabilities (cont'd.)

[Sagonaska School](#)

350 Dundas Street, West
Belleville, ON K8P 1B2
(613) 967-2830

[Trillium School](#)

347 Ontario Street, South
Milton, ON L9T 3X9
(905) 878-8428

[Centre Jules-Leger](#)

281 rue Lanark
Ottawa, ON K1Z 6R8
(613) 761-9300
TTY: (613) 761-9302 and 761-9304

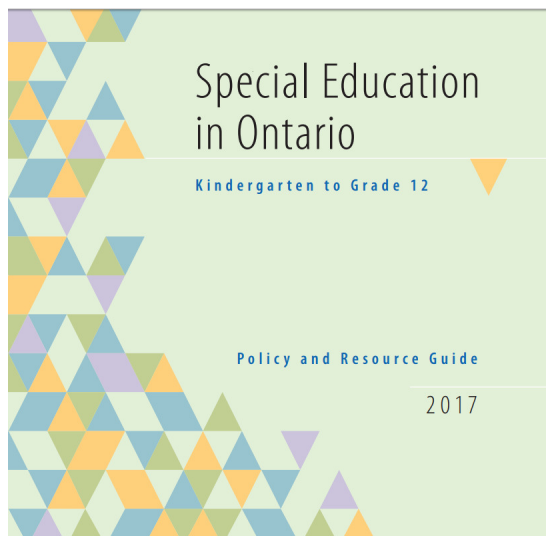
Special Education Programs and Services provided by the Grand Erie District School Board

The Grand Erie District School Board provides a range of placement options for exceptional pupils including regular class placements and special education class placements. Special education classes providing a variety of appropriate programs for exceptional pupils are available.

[Grand Erie District School Board Special Education Plan](#)

Many organizations are available to support you in understanding the I.E.P. and/or to provide additional resources. The principal of your school can provide the names of the organizations that serve your area. This information is also available in the Special Education Advisory Committee's brochure, available at your local school.

Resources for IEPs. Found on the Ministry of Education website.



www.edu.gov.on.ca

Grand Erie District School Board

519-756-6301 Ext 281122
519-754-1606 Ext 287214
519-756-6301 Ext 287217
519-756-6301 Ext 287227

Superintendent of Education— Special Education
Principal-Leader of Special Education
Program Coordinator of Special Education
Applied Behaviour Analysis Coordinator – Special Education

INDIVIDUAL EDUCATION
PLAN (I.E.P.)

A Guide for Parents



Why Does a Student Have an IEP?

What is an I.E.P.?

A written plan that:

- Describes the special education programs and services your child needs to be successful.
- Lists your child's strengths and needs affecting his/her learning.
- Records supports and services that help your child learn and demonstrate learning.
- Identifies expectations that are changed (modified) from your child's age-appropriate grade level.
- Identifies alternative expectations in program areas that differ from the Ontario curriculum. (i.e. social skills, personal care etc.)
- Includes a transition plan for all students who have an IEP, whether identified as exceptional by an IPRC or not, for a variety of contexts that may include: entry to school, between grades, movement from elementary to secondary, movement from secondary to post-secondary, etc.

Every student who is identified as exceptional by an Identification, Placement, and Review Committee (IPRC) must have an I.E.P.

Students who are not formally identified as exceptional but who require a special education program and/or services have an I.E.P. when:

- The School's principal decides that the student will be assessed using modified expectations and/or
- The student regularly needs supports and services (accommodations) for instruction or assessment.

What is my role as a parent?

- Take part in developing the I.E.P. by providing up-to-date information about your child's strengths and needs.
- Practice skills at home that your child is learning at school.
- Share information about skills your child has learned at school and has transferred to home and the community.
- Maintain open communication with your child's school.
- Ask questions.

What can I expect from the school regarding the I.E.P.?

- A copy of the I.E.P. (within 30 school days of the initial IPRC, change of placement or placement in September).
- That the I.E.P. is written in clear, plain language.
- Ongoing participation in the I.E.P. process.
- Being informed of meeting times, and the topics to be discussed at your child's I.E.P. meetings.
- Regular communication from the school regarding your child's progress.
- That the I.E.P., as a working document is reviewed every reporting period.





Individual Education Plan

Appendix G

IEP

(Working Copy) Printed:

Growing Excellence....Inspiring Success

Name	DOB
School	Principal
Student OEN	School Year
Grade	SEA Equipment
Last IPRC/Annual Review Date	Placement Start Date
Exceptionality	Date Annual Review Waived

IPRC Placement	Program/Class Type
-----------------------	---------------------------

Reasons for Developing an IEP

IEP Development Team

Staff Member	Position
---------------------	-----------------

Health Support Services	Sources Consulted in the Development of the IEP
--------------------------------	--

-Parent/Guardian or Student if 16+

Individualized Equipment	SEA Equipment
---------------------------------	----------------------

Educational Assessments		
Type	Date	Summary of Results

Clinical Assessments		
Type	Date	Summary of Results

AREAS OF STRENGTH	AREAS OF NEED
--------------------------	----------------------

**Subject / Courses or Alternative Program**

AC (Accommodated) - changes in teaching, classroom / school environment, assessment methods

MOD (Modified Curriculum) - changes in grade level expectations or changes in number and/or complexity of expectations

ALT (Alternative Program) - areas of learning other than the Ontario Curriculum

Human Resources (Teaching / Non Teaching Support Staff)					
Type	Position	Start Date	Intensity	Frequency	Location

Elementary Program Exemptions / Secondary Compulsory Course Substitutions		
Exemption	Substitution	Reasons

Provincial Assessments	
Permitted Accommodations (As Part Of Regular Classroom Practice)	Exemptions

Secondary School Goal (For Secondary Students Only)

Student is currently working toward the attainment of a:

Successful completion of the Ontario Secondary School Literacy Test or the Ontario Secondary School Literacy Course is a requirement of the Ontario Secondary School Diploma.



Accommodations

Exceptionality : -No exceptionality specified

Purpose Adapt the program for the student - Reflect what is different from what is normally provided for other students in the class - Do not alter the provincial learning expectations - are assumed to be common to all subjects, courses, skill areas unless otherwise indicated

Instructional Accommodations

Environmental Accommodations

Assessment Accommodations

IEP Completion And Reporting

Date of IEP completion **Reporting Dates**

Reporting Format

This IEP also includes (check if applicable)

☐

Annual program goals and learning expectations for modified subjects / courses or alternative program.

☐

A transition plan



Transition Plan



Parent/Student Consultation and Staff Review and IEP Updating

Grand Erie District School Board		
List of Acronyms		Department/Program
AAB	Academic Achievement Battery	Special Education
ABA	Applied Behaviour Analysis	Special Education
ABC	Association for Bright Children	Special Education
AC	Attendance Counsellors	Student Support Services
ADD	Attention Deficient Disorder	Special Education
ADE	Average Daily Enrolment	Business Services
ADHD	Attention Deficient Hyperactive Disorder	Special Education
ADP	Auditory Processing Disorder	Special Education
AER	Assessment Evaluation and Reporting	Special Education
AIP	Assessment For Improvement	
ALL	Analysis of Language Learning	Special Education
AODA	Accessibility for Ontarians with Disabilities Act	Special Education
AOYAP	Accelerated Ontario Youth Apprenticeship Program	Student Success
APA	Additional Professional Assignment	
ARC	Accommodation Review Committee	Business Services
ASD	Autism Spectrum Disorders	Special Education
BASP	Before and After School Programs	Elementary Program
BC	Behaviour Counsellors	Student Support Services
BCBA	Board Certified Behaviour Analyst	Special Education
BCP	Business Continuity Plan	Business Services
BIP	Board Improvement Plan	Student Success
BMS	Behaviour Management Systems	Student Support Services
BYOD	Bring Your Own Device	Information Technology
CAPD	Central Auditory Processing Disorder	Student Support Services
CAS	Children's Aid Society (see also FACS)	FOS SO
CASI	Comprehension Attitude Strategies Interests	Student Support Services
CCAC	see LHIN	Special Education
CDA	Communicative Disorders Assistant	Student Support Services
CEC	Council for Exceptional Children	Special Education
CILM	Collaborative Inquiry Learning Model	Student Success
CLA	Contextualized Learning Assignment	Student Success
COI	Certificate of Insurance	Business Services
CPRI	Child Parent Resource Institute	Student Support Services
CSAP	Cumulative Student Assessment Portfolio	Student Success
CUS	Community Use of Schools	Community Use of Schools
CYW	Child and Youth Worker	Student Support Services
D/HH	Deaf and Hard of Hearing	Special Education
DD	Developmental Disabilities	Special Education
DE	Developmental Education	Special Education
DI	Differentiated Instruction	Student Support Services
DOB	Date of Birth	Schools

Grand Erie District School Board		
List of Acronyms		Department/Program
DPA	Daily Physical Activity	Schools
DRA	Diagnostic Reading Assessment	Elementary Program
DSM	Diagnostic and Statistical Manual of Mental Disorders	Special Education
E&E	Effectiveness and Efficiency Review	Business Services
EA	Education Assistants	Student Support Services
EDI	Early Development Instrument	Elementary Program
EFIS	Education Finance Information System	Business Services
ELD	English Literacy Development	Student Success
ELK	Early Learning Kindergarten	Elementary Program
ELL	English Language Learners	Student Support Services
ELP	Early Learning Program	Elementary Program
EPO	Education Programs Other (Grants)	Business Services
EQAO	Education Quality and Accountability Office	Student Success
ESA	Educational Services Agreement	Business Services
ESL	English as a Second Language	Student Support Services
ETFO	Elementary Teachers' Federation of Ontario	Human Resources
FACS	Family and Children's Society (see also CAS)	Student Support Services
FASD	Fetal Alcohol Spectrum Disorder	Special Education
FDK	Full Day Kindergarten	Elementary Program
FDL	Full Day Learning	Elementary Program
FNMI	First Nation, Metis, Inuit	Indigenous Education
FOG	aka Nominal, Head Count (actual number of students, not ADE)	Business Services
FOS	Family of Schools	Schools
FRG	Facilities Renewal Grant	Business Services
FSL	French as a Second Language	Elementary/Secondary Programs
FTE	Full Time Equivalent	Business Services
GEAP	Grand Erie's Achievement Plan	Student Success
GEESA	Grand Erie Elementary Sports Association	Schools
GEPIC	Grand Erie Parent Involvement Committee	Parent Engagement
GLD	General Learning Disability	Special Education
GPL	Good Places to Learn funding	Business Services
GrEAT	Grand Erie Elementary Administrators Team	Human Resources
GSN	Grants for Student Needs	Business Services
HI	Hearing Impairment	Special Education
HVAC	Heating Ventilation Air Conditioning	Facilities
IBI	Intensive Behaviour Intervention	Special Education
IEP	Individual Education Plan	Special Education
IIR Data	Individual Item Report Data	
IPRC	Identification Placement and Review Committee	Student Support Services
ISA	Intensive Support Amount	Special Education
ISC	Intensive Support Class	Special Education

Grand Erie District School Board		
List of Acronyms		Department/Program
ISRT	In School Resource Team	Special Education
JOHSC	Joint Occupational Health and Safety Committee	Health and Safety
JUFA	Joint Use of Facilities Agreement	Business Services
KLLIC	Kindergarten Literacy Language in the Classroom	Elementary Program
LAN	Local Area Network	Information Technology
LANSA	Leadership Alliance Network for Student Assessment	Student Success
LD	Learning Disability	Special Education
LDCC	Locally Developed Compulsory Credit	Student Success
LEED	Leadership in Energy and Environmental Design	Facilities Services
LHIN	Local Health Integrated Network (previously CCAC)	Student Support Services
LITE	Learner Intervention Tracking for Excellence	Special Education
LLI	Levelled Literacy Intervention	Elementary Program
LNS	Literacy Numeracy Secretariat	Student Success
LRT	Learning Resource Teacher	Student Support Services
LSA	Leading Student Achievement	Student Success
LTSP	Long Term Suspension Program	Student Support Services
MACSE	Minister's Advisory Council on Special Education	Special Education
MAP	Math Alignment Project	Student Success
MFIPPA	Municipal Freedom of Information and Protection of Privacy Act	Privacy & Information
MHAN	Mental Health and Addictions Nurses	Student Support Services
MID	Mild Intellectual Disability	Special Education
MOE	Ministry of Education	Board
NAC	Native Advisory Committee	Indigenous Education
NETS-S	National Educational Technology Standards	Information Technology
NS/NL	Native Studies/Native Languages	Indigenous Education
NTIP	New Teacher Induction Program	Human Resources
OAP	Ontario Autism Program	Special Education
OCA	Ontario Comprehension Assessment	Student Support Services
OCD	Obsessive Compulsive Disorder	Special Education
OCT	Ontario College of Teachers	Human Resources
OCUP	Ontario Curriculum Unit Planner	
ODA	Ontarians With Disabilities Act	Student Support Services
ODD	Oppositional Defiant Disorder	Special Education
OELC	Ontario E-Learning Consortium	Information Technology
OEN	Ontario Education Number	Schools
OERB	Ontario Education Resource Bank	Schools
OESC	Ontario Education Services Corporation	Student Support Services
OEYC	Ontario Early Years Centres	Elementary Program
OFIP	Ontario Focused Intervention Partnership	Elementary Program
OISE	Ontario Institute for Studies in Education	Student Success
OnSIS	Ontario School Information System	Business Services

Grand Erie District School Board		
List of Acronyms		Department/Program
OPSBA	Ontario Public School Boards Association	Business Services
OSAPAC	Ontario Software Acquisition Program Advisory Committee	Information Technology
OSR	Ontario Student Record	School
OSSD	Ontario Secondary School Diploma	Student Success
OSSLT	Ontario Secondary School Literacy Test	Student Success
OSSTF	Ontario Secondary School Teachers' Federation	Human Resources
OSTA	Ontario Student Trustees' Association	Executive Services
OT	Occupational Therapist	Student Support Services
OYAP	Ontario Youth Apprenticeship Program	Student Success
PASS	Principals Assessment of Schools Survey	Business Services
PDD	Pervasive Developmental Disorders (see also ASD)	Special Education
PDT	Program Development Team	Elementary Program
PDT	Provincial Discussion Table	Special Education
PIM	Privacy and Information Management	Executive Services
PIPA	Preschool and Primary Inventory of Phonological Awareness Skills	Elementary Program
PLC	Professional Learning Community	Human Resources
PLT	Principal Learn Team	Human Resources
PNC	Professional Network Centre	Human Resources
PSAB	Public Sector Accountability Board	Business Services
PSSP	Professional Student Services Personnel	Special Education
PSYCH	Psychological Consultants	Student Support Services
PT	Physio Therapist	Student Support Services
PTR	Prohibitive to Repair funding	Business Services
PTR	Pupil Teacher Ratio	Business Services
QA	Quality Accommodations	Business Services
RHPA	Registered Health Professionals Act	Human Resources
RMA	Risk Management Advisory	Business Services
RMS	Renewed Math Strategy	Elementary Program
ROKS	Reaching Out to Kids in Schools	Student Support Services
SAD	Student Achievement Division	Student Success
SAL	Supervised Alternative Learning	Student Success
SALT	System Administrative Leadership Training (formerly School ALT)	
SAO	Student Achievement Officer	Student Success
SAP	Student Action Plan	Student Success
SAPP	Sexual Abuse Prevention Program	
SC	Special Class	Special Education
SDW	Student Data Warehouse	Student Success
SEA	Special Equipment Amount	Special Education
SEAC	Special Education Advisory Committee	Special Education
SEF	School Effectiveness Framework	Student Success
SEPPA	Special Education Per Pupil Amount	Special Education

Grand Erie District School Board		
List of Acronyms		Department/Program
SHSM	Specialist High Skills Major	Student Success
SIM	Schools in the Middle	Student Success
SIP	School Improvement Plan	Student Success
SIP	Special Incidence Portion	Special Education
SIT	School Improvement Team	Student Success
SLP	Speech / Language Pathologist	Student Support Services
SRPR	Surveyors' Real Property Report	Business Services
SS	Student Success	Student Success
SSI	Student Support Initiative	Student Success
SST	Student Success Teacher	Student Success
STEP	Student Transition Experience Program	Student Support Services
STRIVE	Socialization, Transition, Reflection, Innovation, Vocation and Education	
SW	Social Workers	Student Support Services
SWAC	School Within a College	Student Success
SWS	Student Work Study	Student Success
TAC	Tangible Capital Assets	Business Services
TC	Teacher Consultants	Special Education
TCPS	Total Capital Planning Solutions	Business Services
TIPS	Targeted Implementation and Planning Supports	
TLCP	Teaching and Learning Critical Pathway	Human Resources
TLX	Teaching Learning Examples	
TPA	Teacher Performance Appraisal	Human Resources
ULC	Underwriters Laboratory of Canada	Health and Safety
VMI	Visual-Motor Integration	Special Education
VoIP	Voice over Internet Protocol	Information Technology
WAN	Wide Area Network	Information Technology
WHMIS	Workplace Hazardous Materials Information System	Health and Safety



CONSENT FOR DISCLOSURE AND COLLECTION OF INFORMATION

Name of Student _____ Date of Birth: _____
(DD MMM YYYY)
School: _____

I/We the undersigned, authorize the Grand Erie District School Board to:

Release the following information

To _____

Obtain the following information

From _____

For use by such officers or employees of the Board who may need the personal information in the performance of their duties or for the purpose of complying with the Act of the Legislature or in Act of Parliament or a Law Enforcement Agency in Canada to aid a current or potential investigation undertaken with a view to a law enforcement proceeding.

Parent/Guardian: _____

Student (if applicable) _____

Witnessed by: _____

Date: _____

This form will be kept as a record under the authority of the Education Act, R.S.O., 1990, c.E.2 AND the Municipal Freedom of Information and Protection of Privacy Act and will be used for the purposes of the education of students. This form will be retained in the student's Ontario School Record and/or relevant Student Support Services Provider file. Questions about the collection should be directed to the school principal or Superintendent of Education.

Filed in OSR – Consent Folder

Retention: E+1 (E = resolution of issue)



LDAO SEAC CIRCULAR

May 2021

The Learning Disabilities Association of Ontario (LDAO) SEAC Circular is published 5 times a year, usually in September, November, February, April and June.

The following are some topics that your SEAC should be looking at. Action items and/or recommendations for effective practices will be underlined.

Feel free to share any of this information or the attachments with other SEAC members. As always, when you are planning to introduce a motion for the consideration of SEAC, it is particularly important that you share all related background items with your fellow SEAC reps.

Topics covered by this SEAC Circular:

1. Planning for the 2021-22 School Year
2. Special Education Budget
3. Learning Recovery, Summer and Transition Programs
4. De-streaming Issues for Students with Special Education Needs
5. Right to Read Project Update

List of Supplementary Materials:

1. May 4, 2021 Memo Planning for the 2021-22 School Year
2. May 4, 2021 Memo Special Education Grant & Mental Health Funding
3. Special Education Grant in Technical Paper 2021-22
4. May 4, 2021 Memo Learning Recovery & Renewal
5. March 25, 2021 Memo Federal Safe Return to Class Fund: 2020-21 Spring & Summer Learning Opportunities for School Boards
6. De-streaming Issues for Students with Special Education Needs

Note: You can access the SEAC Circular and supplementary materials at www.idao.ca/about/public-policy-advocacy/seac-circulars/.

You can access Ministry funding (B & SB) memos by date at: <http://www.edu.gov.on.ca/eng/policyfunding/memos/>

1. Planning for the 2021-22 School Year

A May 4, 2021 memo, [Planning for the 2021-2022 School Year](#), outlined plans for continued Covid supports, including the requirement that online learning be available as an option for parents in the fall of 2021.

Some other highlights:

Ontario Secondary School Literacy Test (OSSLT)

Students graduating in the 2021-22 school year are exempted from the literacy graduation requirement. With respect to notations for the report card and the Ontario Student Transcript, schools are expected to follow the guidance provided in the 2020-21 school year. The literacy graduation requirement will be restored for students graduating in the 2022-23 school year. Students in Grades 10 and 11 and non-graduating students, including those who are learning remotely, are required to work towards the literacy graduation requirement, 8 through participating in the OSSLT, adjudication or the Ontario Secondary School Literacy Course (OSSLC). EQAO will provide a Fall 2021 administration of the OSSLT in addition to a Spring 2022 administration

EQAO Assessments

In 2020-21 EQAO assessments for Grades 3 and 6 were paused while EQAO aligned assessments with the new elementary math curriculum and transitioned to a new online adaptive platform. Field tests were provided for the new online Grade 9 math assessment and the online OSSLT. In 2021-22, regular EQAO assessments will resume, with the following adaptations:

- All students in Grade 3 and 6 attending in-person learning will participate in the online EQAO math, reading, and writing assessments.
- All students enrolled in Grade 9 math attending learning in-person will write the Grade 9 math assessment. Results of this assessment may count towards up to 10% of the student's final mark.
- Where applicable, students will continue to receive individual reports.

For EQAO assessments, including the OSSLT, students who are learning remotely and wish to participate in the assessments can, at the discretion of the school board, attend in-person for the purpose of participating in the assessment so long as all applicable health and safety measures can be met.

School Board Electronic Meetings

In 2020, the Ministry of Education brought forward amendments to Ontario Regulation 463/97 (Electronic Meetings and Meeting Attendance) under the Education Act to most recently waive the requirement for school board trustees to attend meetings in person until November 30, 2021. To continue to support the ongoing operation of school boards in the upcoming school year, the ministry will recommend regulatory amendments that, if approved, would extend the

ability for trustees to continue meeting by entirely electronic means until November 14, 2022 (the end of the next trustee period).

NOTE: SEAC meetings can continue to be virtual until November 14, 2022 (until trustee elections and the appointment of new SEACs) and must be open to the public, whether they are in-person or virtual.

2. Special Education Budget

On May 4, 2021 the Ministry released a series of memos, and posted information on projected funding for the 2021-22 year on the Ministry website:

www.edu.gov.on.ca/eng/policyfunding/funding.html.

Attached is the memo on [Special Education Grant and Mental Health Funding Changes for 2021-22](#), as well as a document I created summarizing the amounts allocated for different sections of the Special Education Grant (excerpted from the [Technical Paper 2021-22](#)).

A good descriptive summary of the components of the Special Education Grant can be found in [2021-22 Education Funding: A Guide to the Special Education Grant](#)

Also of interest are Special Education Funding Guidelines:

[Special Equipment Amount \(SEA\), 2021-22](#)

[Special Incidence Portion \(SIP\), 2021-22](#)

Note a Special Equipment Amount (SEA) Clarification for 2021-22:

School boards may purchase software that is required to access to the Ontario curriculum to support students with special education needs, through the SEA Per Pupil Amount. This can include reading intervention software.

This will be a challenging year for SEACs to get a full understanding of their board's Special Education Budget, with all the various announcements of funding that have been made over the last year, and changes to locations of some funding allocations. It will be especially important to have a presentation to SEAC on their board's planning for special education funding.

For effective practices see: www.paac-seac.ca/home/paac-on-seac-effective-practices-handbook-for-seac-members/section-3-seac-roles-and-responsibilities/3-6-special-education-budget-and-financial-statements/.

3. Learning Recovery, Summer and Transition Programs

The May 4, 2021 memos, [Planning for the 2021-2022 School Year](#) and *Learning Recovery & Renewal* (attached) both speak to a learning recovery and renewal approach to include a focus on student mental health and well-being, early reading and math, re-engaging students, special

education, targeted French language supports, and educator readiness including professional learning communities and opportunities to share effective practices.

Some highlights:

Early Reading

The decline in Kindergarten enrolment and the disruption to learning, particularly for our youngest learners, requires a focus on early reading and math. School boards were provided with funding for evidence-based reading intervention programs or programs that have been shown to be efficacious in improving student outcomes for struggling readers in 2021: March 25, 2021 Memo *Federal Safe Return to Class Fund: 2020-21 Spring & Summer Learning Opportunities for School Boards Opportunities* (see attachment).

SEACs should ask how this funding is being used to provide evidence-based reading intervention programs.

NOTE: To support effective instruction in reading, the ministry will also work with experts to release an educator guide that outlines evidence-based, high-yield classroom strategies to support students in Kindergarten to Grade 3. This guide will be released at the start of the 2021-22 school year.

Special Education

Special Education Grant (SEG) funding is projected to increase to over \$3.21 billion for the 2021-22 school year. School boards can use this SEG funding to retain additional educational staff, provide professional assessments, purchase resources or evidence-based programs or interventions to support learning for students with special education needs. Additionally, school boards are permitted to use their 2020-21 After School Skills Development Program (ASSDP) funding during summer 2021.

NOTE: Prior to the start of the school year, school boards will be provided with a Remote Learning Guide for Students with Special Education Needs to support students who continue to learn remotely.

SEACs should ask their boards to share both the *Educator Guide that outlines evidence-based, high-yield classroom strategies to support effective reading instruction in Kindergarten to Grade 3*, and the *Remote Learning Guide for Students with Special Education Needs*, as soon as they are available.

Summer Learning

The March 25, 2021 memo, *Federal Safe Return to Class Fund: 2020-21 Spring and Summer Learning Opportunities for School* (attached) outlines funding available for summer and transition programming.

Appendix 3 of the memo lists board by board allocations for various programs covered.

Some highlights:

Math and Literacy Transition Supports Funding will be available for targeted math and literacy transition supports for Grade 8 students to help prepare them to transition into the de-streamed Grade 9 math course in the 2021-22 school year. A focus will be on supporting students with learning gaps in math and literacy and/or from vulnerable and underserved population groups, including Indigenous, Black and otherwise racialized students, students from low income households, *and students with special education needs*.

Provincial and Demonstration Schools, including the Centre Jules-Leger, will be able to offer expanded summer learning opportunities focused on literacy, numeracy and skills building for their students. Schools will be contacted directly by ministry staff regarding this funding

Supports for Students with Special Education Needs

To support students with special education needs in summer program offerings in both credit and non-credit granting courses, additional funding may be used by school boards for additional staffing resources such as special education resource teachers, and educational assistants.

Summer Transition Program

School boards will be able to provide a summer program for students with high special education needs who may find the return to school challenging, with a focus on closing gaps in skills development, learning, and on establishing classroom routines prior to the opening of schools.

Mental Health Supports

Funding will be provided to allow for the ongoing provision of mental health support over the summer months to students who are struggling with mental health concerns. Providing a connection to school-based mental health professionals will also help to facilitate a smooth transition back to school for students for whom a return to school would be challenging.

SEACs should ask for details on how these funding envelopes will be used for students with special education needs.

4. De-streaming Issues for Students with Special Education Needs

On April 1, 2021 the Ministry of Education held a Roundtable stakeholder consultation to give input into a draft De-streaming Guide for school board leaders. This was in preparation for de-streaming of Grade 9 Mathematics in the September 2021. The attached **PAAC on SEAC submission** to the Roundtable is shared to inform SEAC discussion on how the new de-streaming policy will be implemented in their school board. SEACs should ask to receive the final version of the De-streaming Guide when it is released.

5. Right to Read Project Update

In an April 30, 2021 Update on the Right to Read Inquiry, the Ontario Human Rights Commission (OHRC) summarized progress:

The inquiry team has received documents, data and information from the eight representative Ontario English language public school boards and the Ministry of Education (MOE). We have also received and reviewed documents, data and information from Ontario's 13 English-language public faculties of education. The evidence-gathering phase is now complete, and the inquiry team and OHRC's experts are analyzing the large amount of data, information and documents received and drafting a final report.

This report will address concerns with how Ontario's public education system meets the needs of students with reading disabilities or at risk for these disabilities in areas such as curriculum and teaching, early screening, reading interventions, accommodations and psycho-educational assessments. Inquiry findings will also help other students (low-income, racialized, First Nations, Métis and Inuit, newcomer, English Language Learners, other disabilities etc.) who are not realizing equitable opportunities to succeed.

COVID-19 and other factors have delayed some elements of the inquiry. A final inquiry report, which will include detailed findings and recommendations for government and education stakeholders, is now planned for release in fall 2021.

www.ohrc.on.ca/en/right-read-public-inquiry-on-reading-disabilities

Questions? Email Diane Wagner at dianew@LDAO.ca

Board of Directors

Dr. Cameron Montgomery
Chair

Dr. Serge Demers
Vice-Chair

Gail Anderson

Emily Brown

Dr. John Tibbits

Dr. Kyle Wilson

Laurie McNelles, Ph.D.
Chief Operating Officer

May 12, 2021

Wendy Rose, Chair
Grand Erie DSB SEAC
Grand Erie District School Board
349 Erie Avenue
Brantford ON N3T 5V3

Dear Ms. Rose,

Thank you for your letter as Chair of the Special Education Advisory Committee at the Grand Erie DSB regarding the accessibility of EQAO's new online assessments, mainly the Ontario Secondary School Literacy Test (OSSLT). EQAO welcomes your feedback and recognizes the importance of student, parent and educator input in moving forward with its digitalization of assessment initiative.

The purpose of this year's OSSLT field test is to allow students and educators to become familiar with the new assessment model, to support the validation and continued development of the new e-assessment platform, and to allow students to count successful attempts towards their literacy graduation requirement in future years. School administrators, in partnership with teachers, are responsible for ensuring that accommodations and special provisions are provided to students who may require them. [User guides](#) for school administrators, teachers and school board IT professionals are available to support the administration of the digital assessment, as are the [live webinar series hosted by EQAO](#) for specific school and board audiences.

Accessibility supports are available for all students once they log in to the online OSSLT and are located in the student toolbar. These supports include a built-in text-to-speech function. Alternative formats of the assessment have also been created for students with special education needs, including students with a visual impairment. Braille or printable versions of the assessment can be requested for students who require additional support material, and MP3s with full audio descriptions are also available when the Braille or printable version is requested.

A [list of available accessibility tools and software](#) appears on EQAO's website, including, but not limited to, the following third-party software which are supported by the e-assessment platform when using the required lockdown browser, Secure Exam Browser (SEB) or Kiosk mode:

- Read&Write for Google Chrome;
- Dragon NaturallySpeaking;
- Kurzweil 3000;
- NVDA Screen Reader.

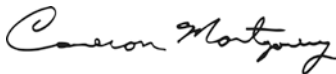
However, if an accessibility or accommodation software (e.g., Microsoft Dictate or Read & Write for Google Chrome extension) is not compatible with the lockdown browsers (SEB or Kiosk), alternative access to the assessment through the EQAO website may be provided to allow the software to run normally. This alternative access will retain key security measures that interrupt progress if the student attempts to navigate away from the testing window and is available to students who have accommodation with assistive technology indicated in their student data.

If an accessibility or accommodation software required by the school is not listed on EQAO's website, schools are able to contact EQAO technical support at egao-support@vretta.com or 1-888-887-3882 to receive more information about third-party software currently supported by the e-assessment and how to use them through the alternative access to the assessment.

As the agency moves forward and gathers feedback, it will continue to make enhancements to the online assessment system.

Thank you for raising these concerns and for your work and dedication to student learning and to the improvement of each student's outcomes.

Sincerely,



Dr. Cameron Montgomery
Chair, EQAO Board of Directors

Cc: Hon. Stephen Lecce, Minister of Education