

South East Norfolk Accommodation Review

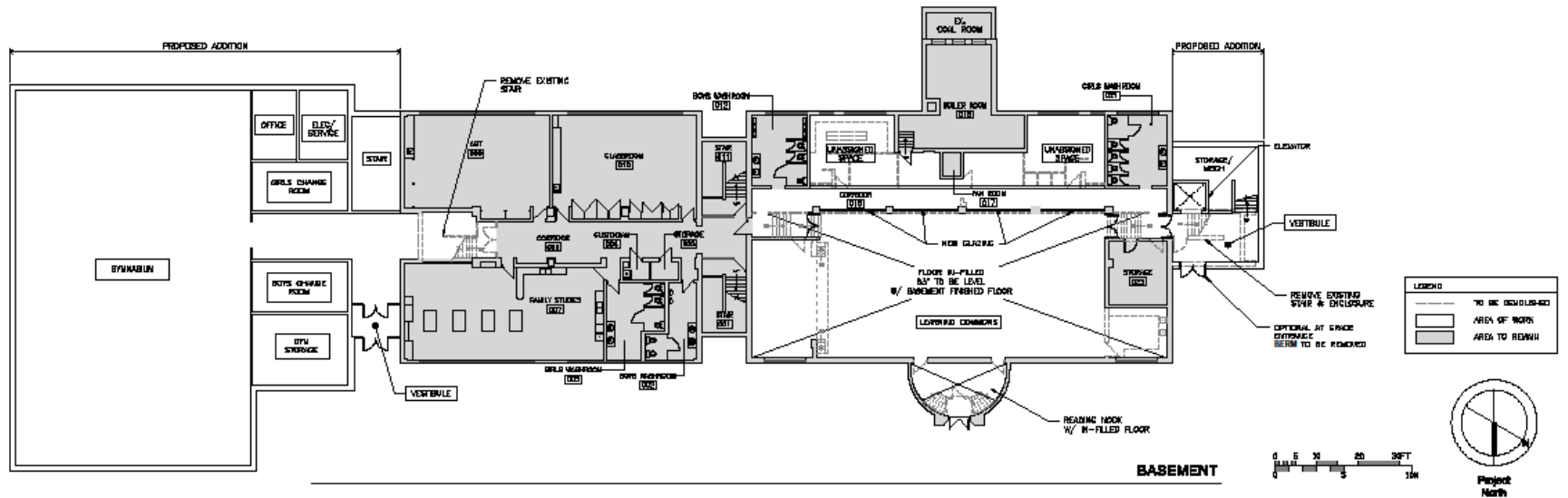
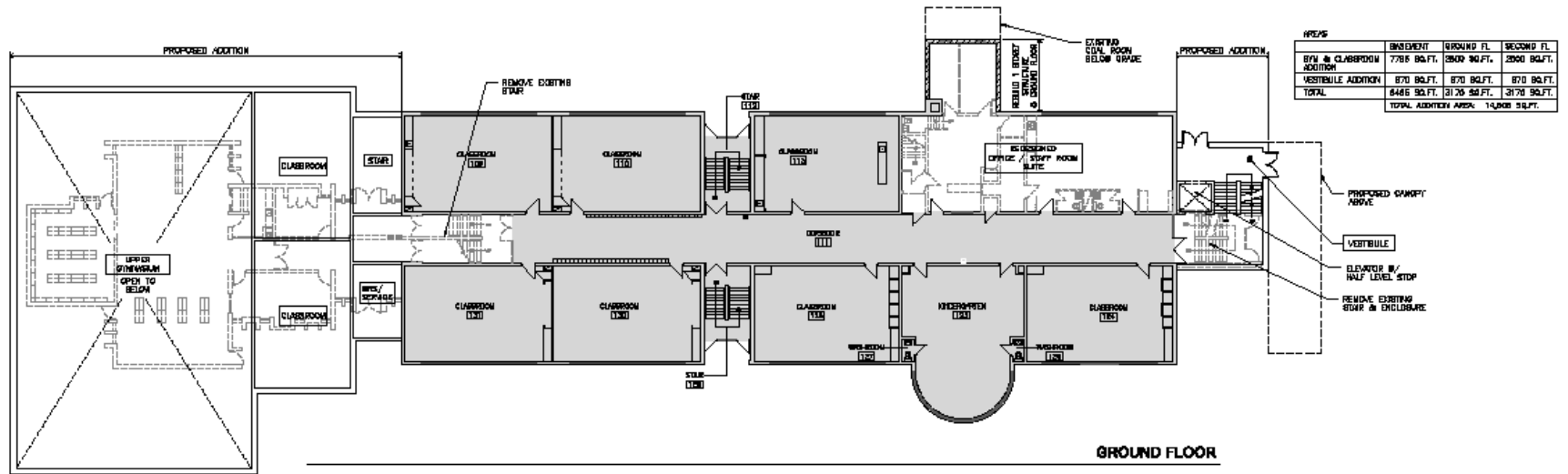
Date: April 12, 2016



Achievement

Environment

Engagement



Addition & Renovation to
GEDSB - Elgin Avenue Public School
 80 Elgin Ave
 Elgin, Ontario

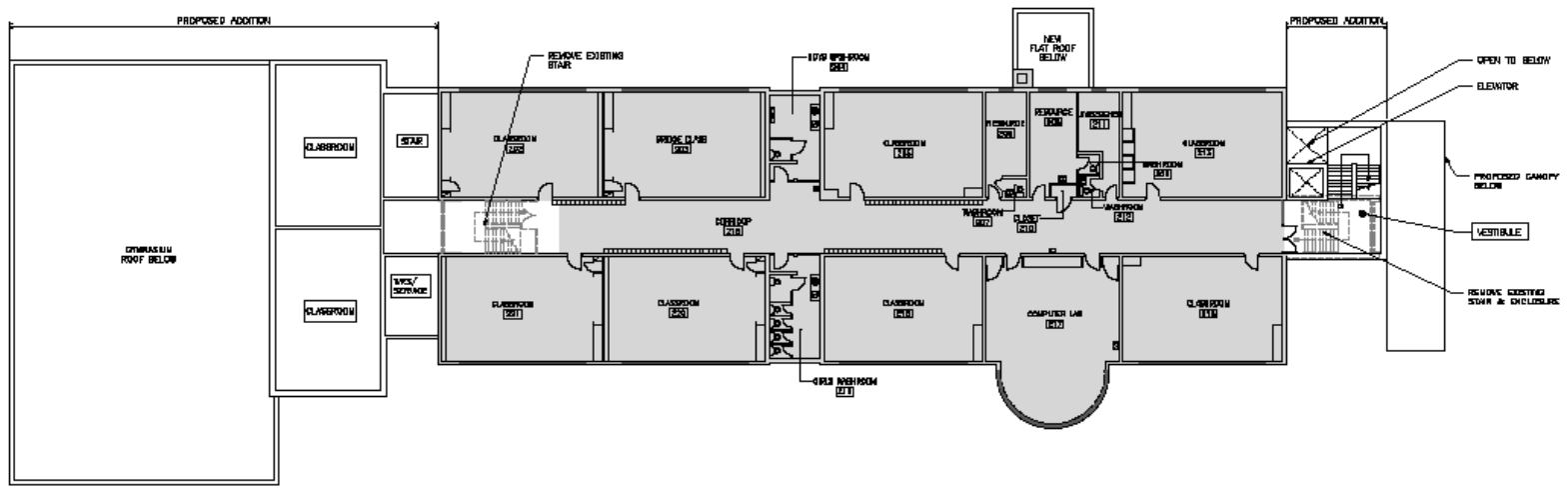
Proposed Plan

February 10, 2016
 Scale: 1/24" = 1' - 0"

TCA **THIBAU + CURRIAN ARCHITECTS INC.**
 thoughtful buildings + interiors

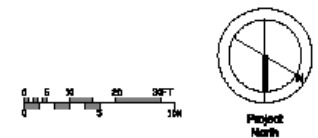
TEL: 800-260-0403
 114 JAMES STREET WEST, SUITE 204, WINDSOR, ONTARIO N9A 5B7

AREA	SPERMET	FIRST FL.	SECOND FL.
BYN & CLASSROOM ADDITION	778 SQ.FT.	2900 SQ.FT.	2900 SQ.FT.
VESTIBULE ADDITION	870 SQ.FT.	870 SQ.FT.	870 SQ.FT.
TOTAL	846 SQ.FT.	3170 SQ.FT.	3170 SQ.FT.
	TOTAL ADDITION AREA: 14,308 SQ.FT.		



SECOND FLOOR

LEGEND	
	TO BE EXCLUDED
	AREA OF WORK
	AREA TO REMAIN



Addition & Renovation to
GEDSB - Elgin Avenue Public School
 80 Elgin Ave
 Simcoe, Ontario

Proposed Plan - 2nd Floor

February 10, 2016
 Scale: 1/24" = 1' - 0"

TCA | **THIRK + CURRIAN ARCHITECTS INC.**
 thoughtful buildings + interiors
 Tel: 905-276-0883
 Fax: 905-276-2884
 116 JAMES STREET NORTH, SUITE 204, WINDSOR, ONTARIO N9A 5P7

Current Transportation Information

School	Average Distance to school (KM)	Transportation Eligibility (%)		Ride Times (AM and PM) (minutes)		
		Eligible	Non-Eligible	Longest	Shortest	Average
Elgin	0.94	1%	99%	32	15	23.5
Lynndale	2.09	17%	83%	43	2	18.7
West Lynn	2.5	47%	53%	60	2	17
Walsh	7.6	83%	17%	55	1	17.6
Walsh (FI)	13.29	99%	1%	80	10	32.9
Lakewood	2.84	56%	44%	43	1	12



Growing Excellence... Inspiring Success

Transportation Information with proposed boundary changes and West Lynn closure.

School	Average Distance to school (KM)	Transportation Eligibility (%)		Ride Times (AM) (minutes)		
		Eligible	Non-Eligible	Longest	Shortest	Avg
Elgin	2.06	37%	63%	55	3	16.0
Lynndale	2.38	17%	83%	43	0	17.5
West Lynn						
Walsh	8.09	77%	23%	59	0	18.6
Walsh (FI)	13.34	99%	1%	70	1	31.0
Lakewood	3.59	62%	38%	55	1	15.4



Growing Excellence... Inspiring Success

Grandfather Scenario for Walsh PS Students as of April 11, 2016

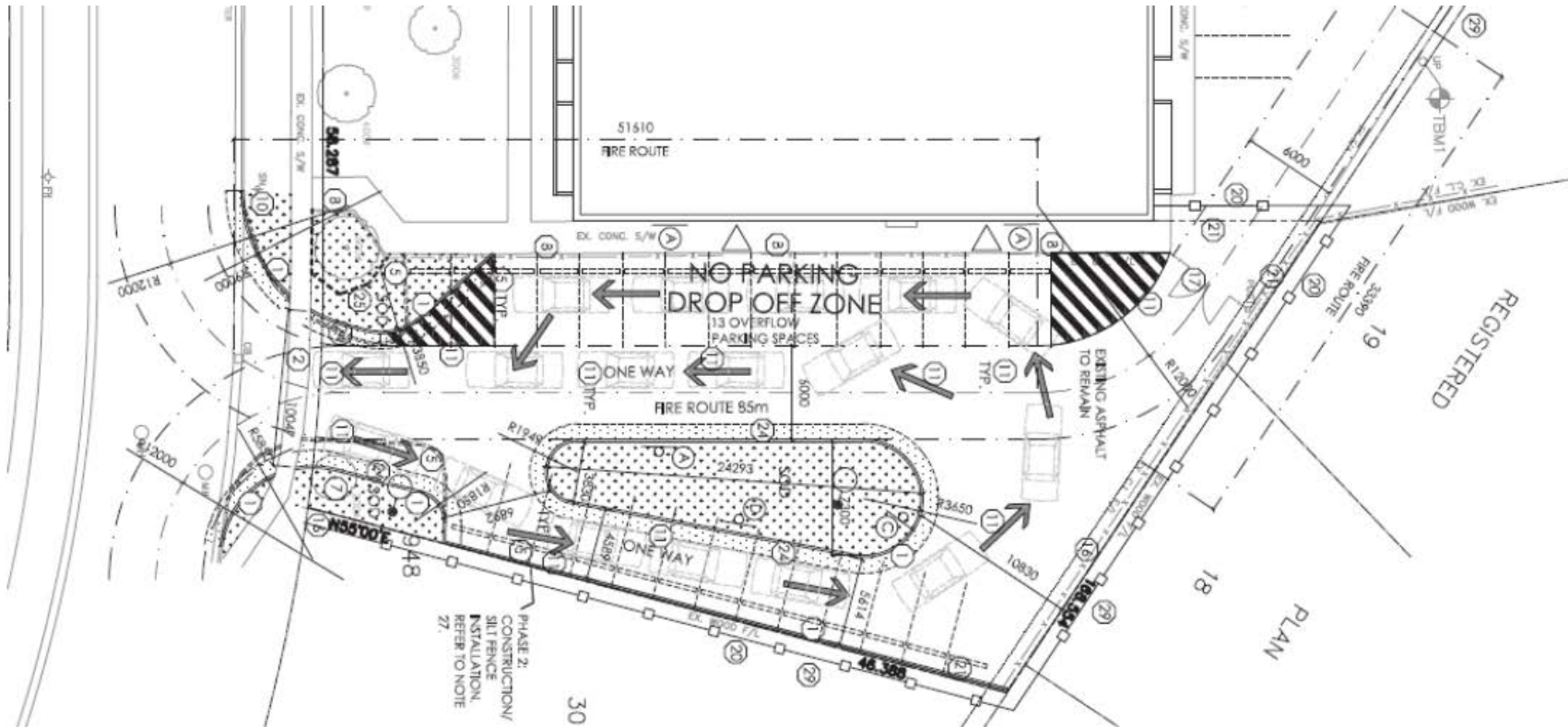
School	Average Distance to school (KM)	Transportation Eligibility (%)		Ride Times (AM) (minutes)		
		Eligible	Non-Eligible	Longest	Shortest	Avg
Elgin						
Lynndale						
West Lynn						
Walsh	7.4	85%	15%	48	0	16.8
Walsh (FI)						
Lakewood						



Growing Excellence... Inspiring Success

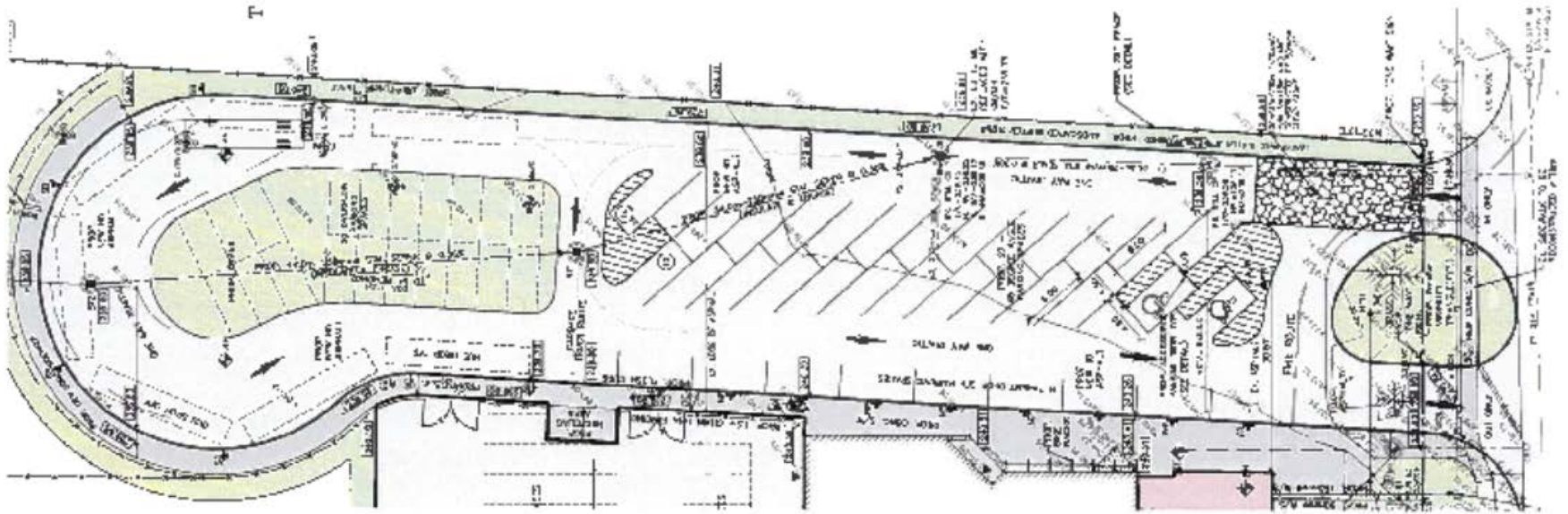
Example 1. Parent Drop Off and Pick up.

At the school in this plan, the drop off is separate from the staff and visitor parking areas and the bus drop off (they are on the other side of the school property). This separates the two streams of traffic at peak times of congestion and gets the parent traffic off the street.



Growing Excellence... Inspiring Success

Example 2. – At this school the frontage is narrow and requires a combined entrance for school bus and parent traffic, but separates the two streams of traffic so that buses and parent drop off can be completed safely and effectively.



South East Norfolk Elementary

Summary of Enrolment and Capacity *with Option to Close Elgin*

School	Capacity	Addition	Total Capacity	5 Year Projection		10 Year Projection	
				Enrolment	Utilization	Enrolment	Utilization
Elgin Avenue	530		0	0	0.0%	0	0.0%
Lakewood	561		561	509	90.7%	560	99.8%
Lynndale	442		442	355	80.3%	348	78.7%
Walsh	404		404	391	96.8%	359	88.9%
West Lynn	351	138	489	484	99.0%	446	91.2%
Total	1758	138	1896	1739		1713	
Surplus Pupil Spaces				19		45	
Utilization				91.7%		90.4%	

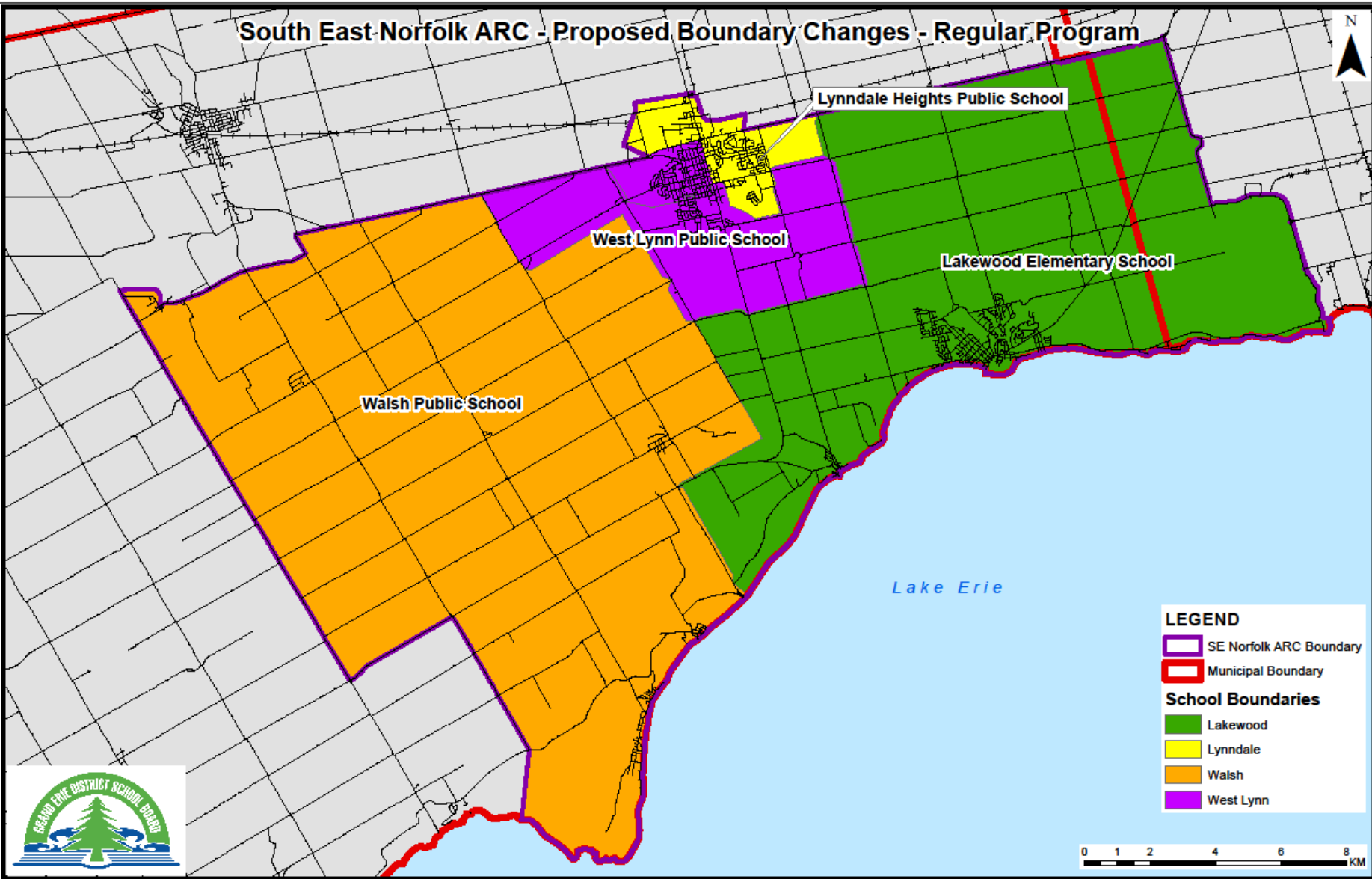
a) Elgin would close and its full catchment area would attend West Lynn

b) The French Immersion Program at Walsh would be split with Lakewood and both schools would offer JK-Grade 8 French Immersion (Dual Track)



Growing Excellence... Inspiring Success

South East Norfolk ARC - Proposed Boundary Changes - Regular Program



Lynndale Heights Public School

West Lynn Public School

Lakewood Elementary School

Walsh Public School

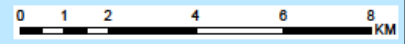
Lake Erie

LEGEND

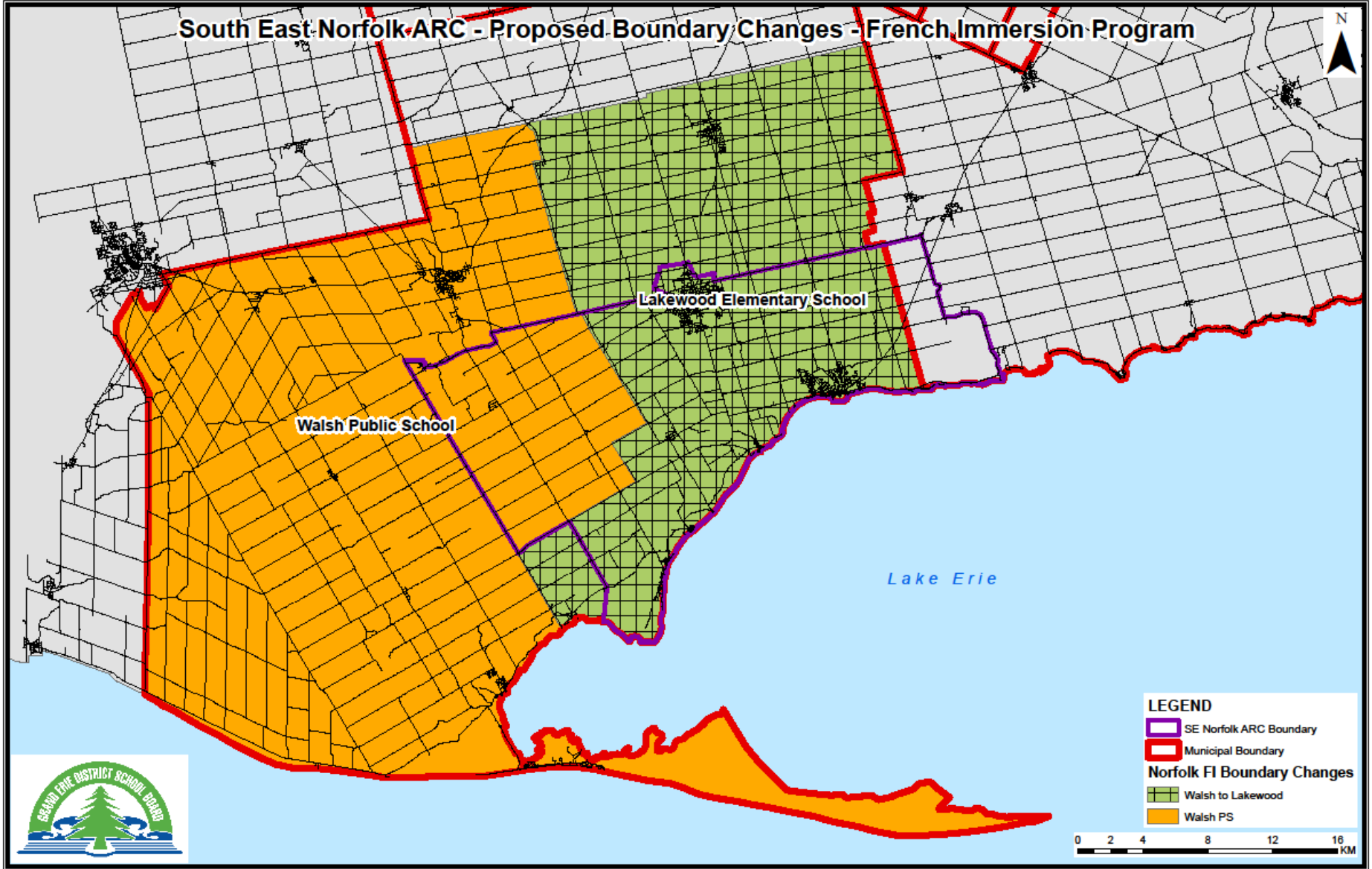
- SE Norfolk ARC Boundary
- Municipal Boundary

School Boundaries

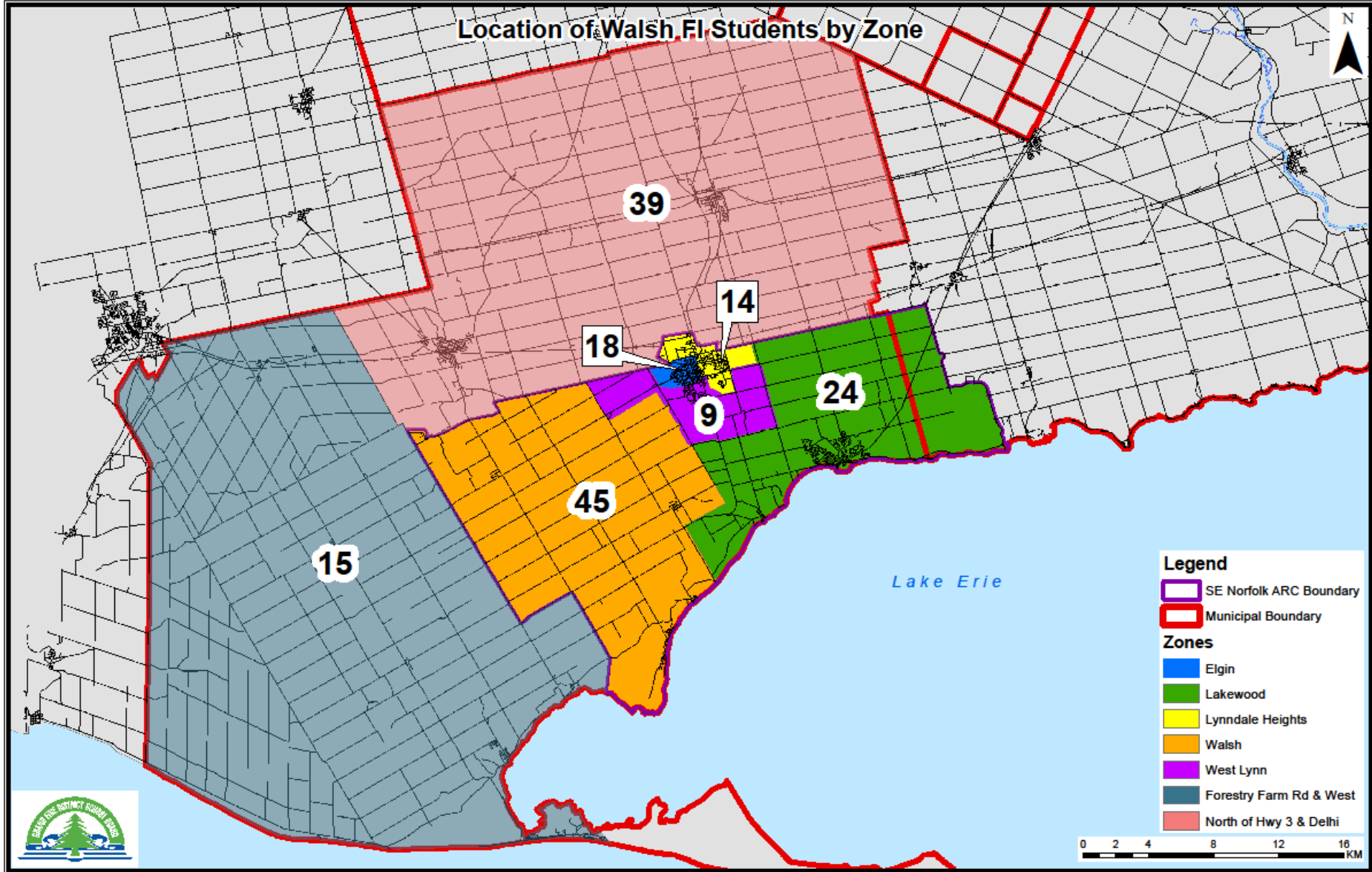
- Lakewood
- Lynndale
- Walsh
- West Lynn



South East Norfolk ARC - Proposed Boundary Changes - French Immersion Program



Location of Walsh FI Students by Zone

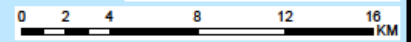


Legend

- SE Norfolk ARC Boundary
- Municipal Boundary

Zones

- Elgin
- Lakewood
- Lynndale Heights
- Walsh
- West Lynn
- Forestry Farm Rd & West
- North of Hwy 3 & Delhi





Growing Excellence... Inspiring Success