



**Caledonia Boundary Review  
Public Meeting #1  
November 6, 2024**



# Boundary Review Public Meeting #1: Agenda

- Welcome/Land Acknowledgement
- Introductions
- Setting the Stage for Public Consultation
  - Virtual Meeting Guidelines
  - Procedures for Public Input
- Boundary Review
  - Boundary Review Working Committee Terms of Reference
  - Background
  - Current situation and enrolment projections
  - Accommodation Option
  - Legacy Option
- Public Discussion
- Next Steps





# Boundary Review Public Meeting #1: Land Acknowledgement

*Grand Erie District School Board recognizes **Six Nations of the Grand River** and **Mississaugas of the Credit First Nation**, as the longstanding peoples of this territory. We honour, recognize, and respect these communities as well as all First Nations, Metis and Inuit Peoples who reside within the Grand Erie District School Board. We are all stewards of these lands and waters where we now gather, learn and play, and commit to working together in the spirit of Reconciliation.*



# Boundary Review Public Meeting #1: Welcome/Introductions

- Superintendent of Education – **Julie White** (Chair)
- Superintendent of Business – **Rafal Wyszynski**
- Planning Supervisor – **Nathan Hercanuck**
- Planning Officer – **Jahnvi Pathak**
- School Administrators:
  - Caledonia Centennial Public School – **Colleen Kelly**
  - J. L. Mitchener Public School – **Scott McDonald**
  - River Heights School – **Lori Macnab**
  - Seneca Central Public School – **May-Lynn Liao**
  - New Caledonia Elementary School – **Mark Fraser**



# Boundary Review Public Meeting #1: **Public Consultation**

## ■ Meeting Procedures

- An initial meeting schedule will be established by Board staff; changes to meetings including adding or cancelling meeting dates may be made by the Boundary Review Working Committee (BRWC).
- BRWC meetings are not public meetings. Non-members may attend meetings provided they are invited by the BRWC.
- Minutes will be taken at each meeting and approved at subsequent BRWC meetings.
- BRWC meeting minutes and presentation materials will be posted on the Board's website after minutes approval at subsequent BRWC meeting.
- Public Meeting materials will be posted on the Board's website for public consumption prior to the public meeting. Public Meeting minutes will be posted on the Board's website after review and approval by the BRWC, at the next BRWC meeting.



# Boundary Review Public Meeting #1: **Terms of Reference**

## ■ **Membership**

- Superintendent of Education responsible for the identified school(s) (chair)
- Superintendent of Business
- Planning Supervisor
- Planning Officer
- Principal of the identified school(s)
- Up to two School Council Representatives of the identified schools
- Additional resource personnel as required



# Boundary Review Public Meeting #1: **Terms of Reference**

## ■ **Purpose**

- Conduct a review of the attendance area of a school or group of schools within a specified review area of the Board
- Advise and provide recommendations to Board of Trustees on attendance area changes in review area
- **School closures cannot be considered under a Boundary Review process**



# Boundary Review Public Meeting #1: **Terms of Reference**

## ■ **Responsibilities**

- Review Objectives
- Public information and access
- Boundary options
- Community consultation and public meetings
- Report to Finance Committee





# Boundary Review Public Meeting #1: **Terms of Reference**

## **GEDSB Boundary Review Reference Criteria:**

Where possible, boundary options should take into consideration:

Grade Configuration

- JK-8 and 9-12 are preferred school organizations. However, other school organizations (such as 7-12, JK-12) will be considered based on current enrolment and projected enrolment, school utilization, facility condition and program (ex. French Immersion, Special Education, etc.), and other factors.



# Boundary Review Public Meeting #1: **Terms of Reference**

## **GEDSB Boundary Review Reference Criteria:**

Where possible, boundary options should take into consideration:

### School Utilization

- Maximize the use of existing facilities and minimize the number of students in portables or temporary structures.
- Maximize the number of facilities that adequately meet student and community needs for accessibility.
- Consider the equity of facilities, site, size and program standards.
- All facilities should provide safe and secure learning environments for all students and staff.



# Boundary Review Public Meeting #1: **Terms of Reference**

## **GEDSB Boundary Review Reference Criteria:**

Where possible, boundary options should take into consideration:

Program Offerings

- Maximize access to and equity of program offerings (i.e. French Immersion, Special Education, etc.).
- Minimize the number of combined grades at a school.



# Boundary Review Public Meeting #1: **Terms of Reference**

## **GEDSB Boundary Review Reference Criteria:**

Where possible, boundary options should take into consideration:

Transportation

- Maximize the number of students within a school boundary who are within walking distance, minimizing the need for transportation and annual operating costs.

Transitions

- Minimize the number of transitions for students where changes are proposed.



# Boundary Review Public Meeting #1:

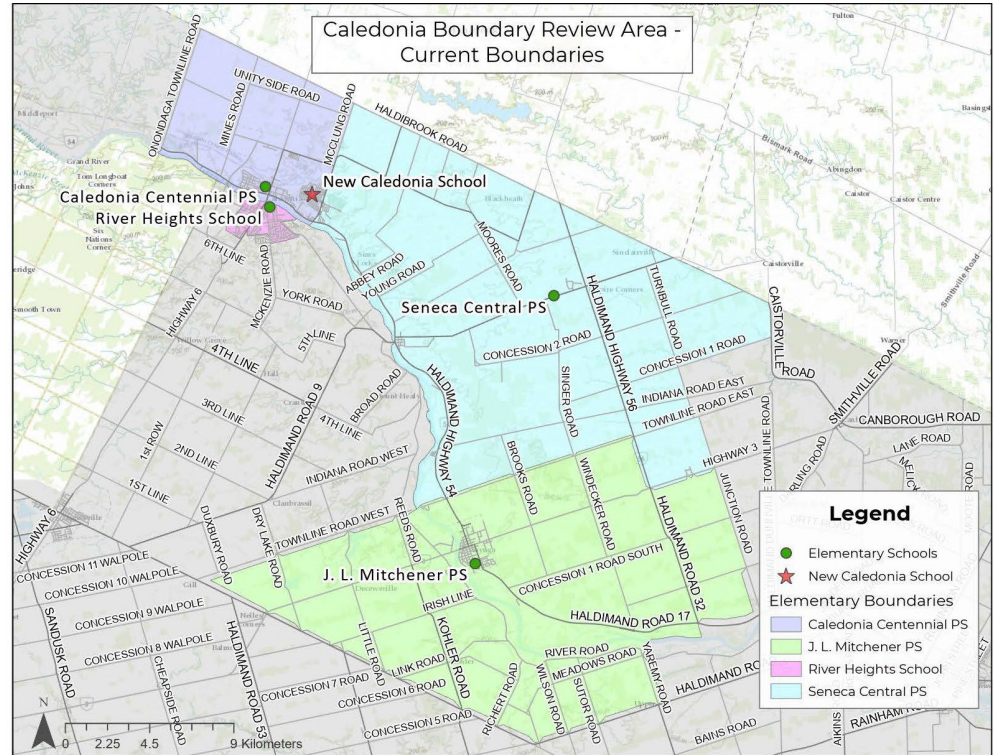
## Background

- New joint-use school between Grand Erie and Brant Haldimand Norfolk Catholic DSB will be opening in September 2025.
- This Boundary Review process will establish an attendance area boundary for the new Caledonia Elementary School.
- GEDSB new school capacity: 441 students.
- New students within CCPS boundary area are directed to J. L. Mitchener until the new school is constructed.
- Effective September 2024, French Immersion program for grades JK-3 will transfer from CCPS to River Heights School.



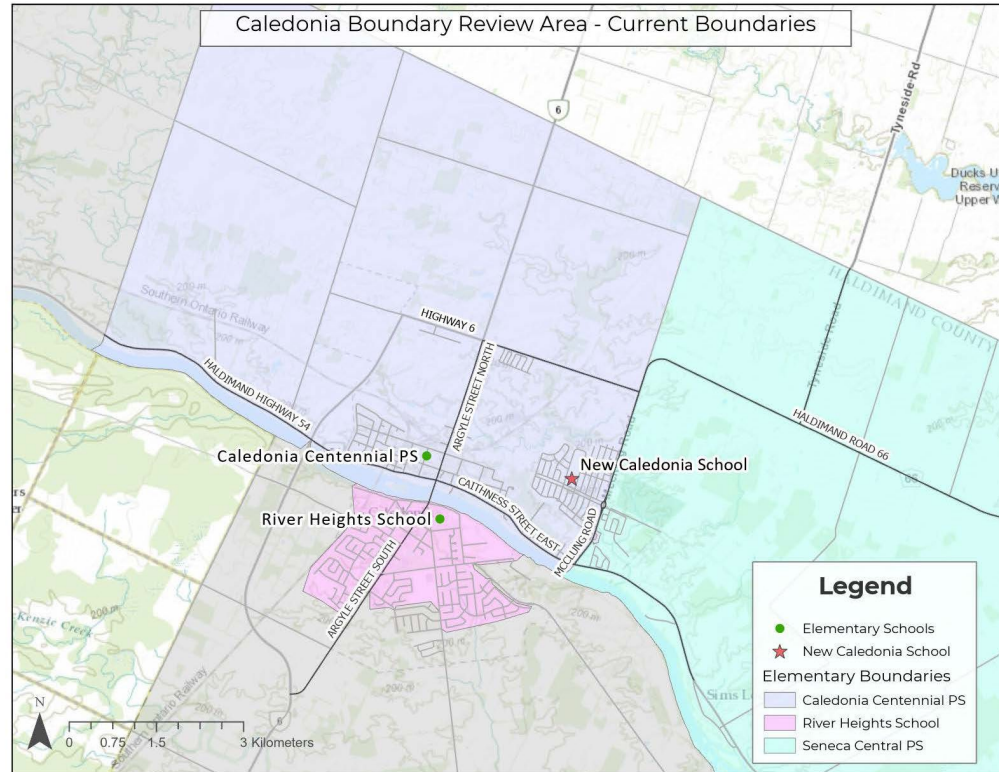
# Boundary Review Public Meeting #1: Background

- Caledonia Centennial Public School
- River Heights School
- Seneca Central Public School
- J.L. Mitchener Public School





# Boundary Review Public Meeting #1: Background





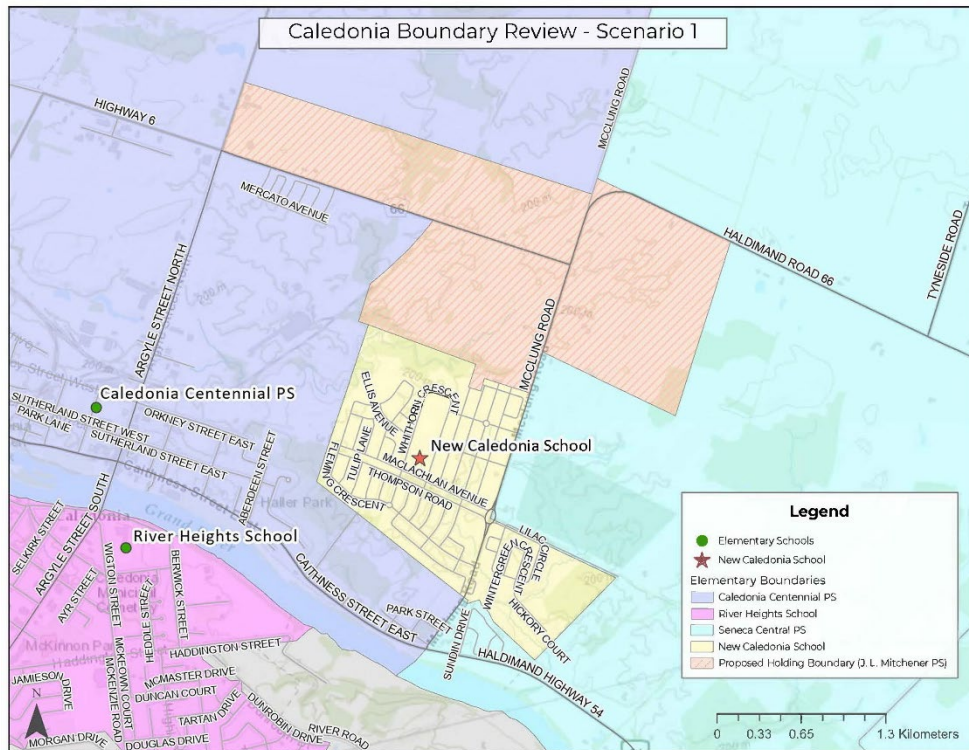
# Boundary Review Public Meeting #1: Accommodation Options

1. New school boundary only includes the walking zone
2. New school boundary includes the walking zone and the area east of McClung Rd and Hwy 54 (Sundin Drive)
  - Transportation required



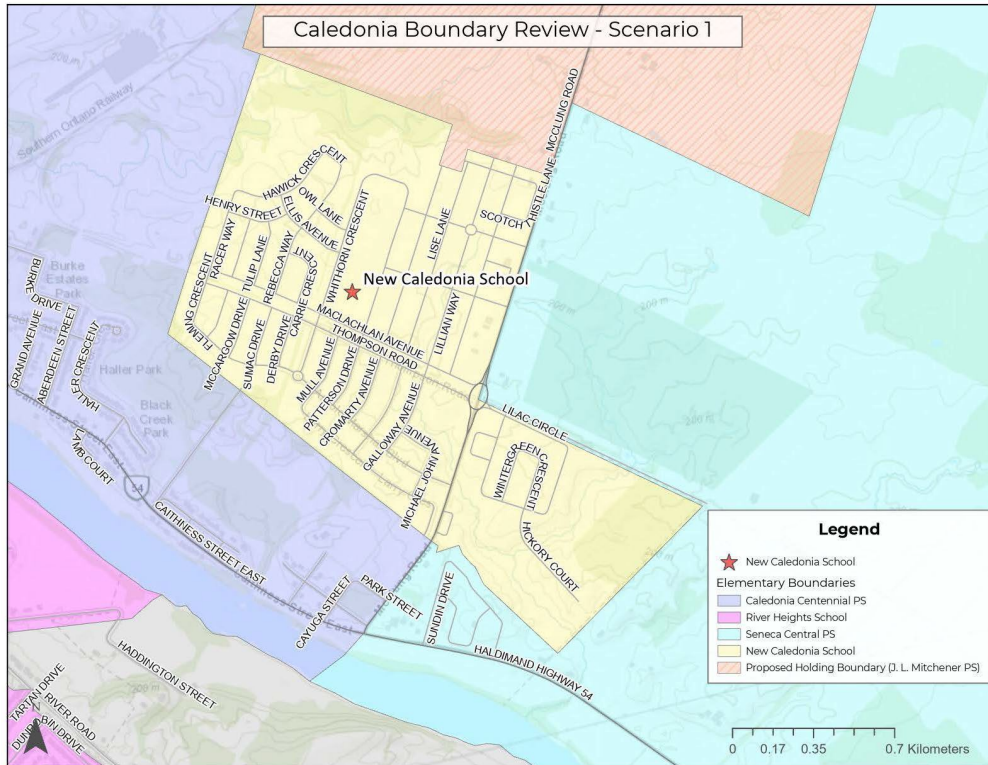
# Boundary Review Public Meeting #1: Accommodation Options

- Proposed attendance area for Scenario 1



# Boundary Review Public Meeting #1: Accommodation Options

- Proposed attendance area for Scenario 1



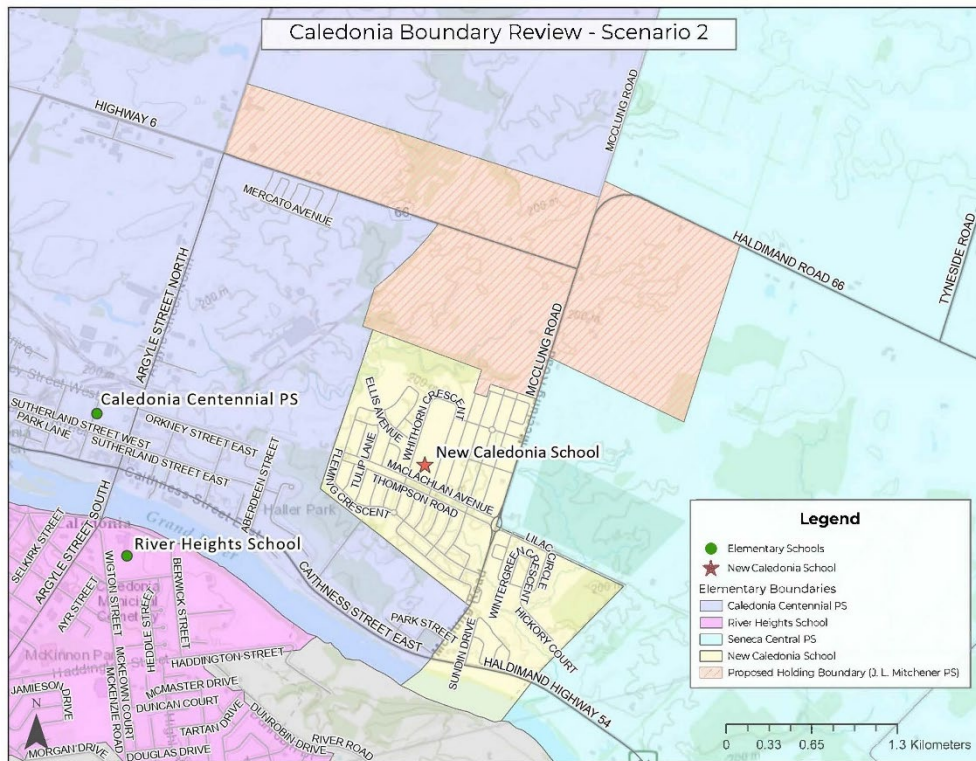






# Boundary Review Public Meeting #1: Accommodation Options

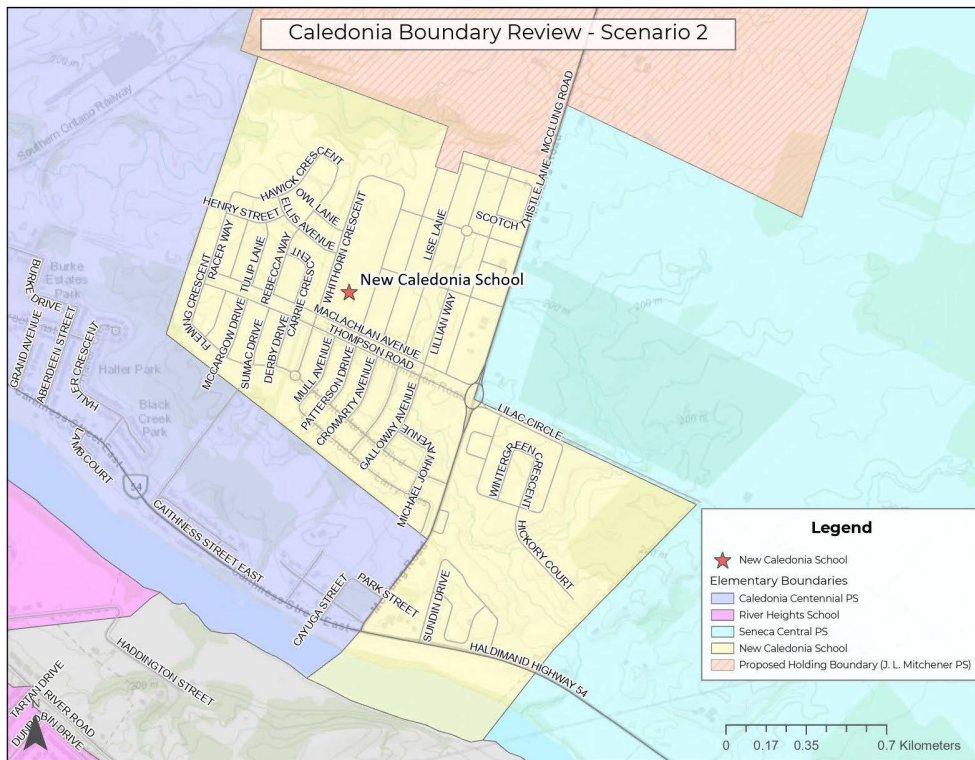
- Proposed attendance area for Scenario 2





# Boundary Review Public Meeting #1: Accommodation Options

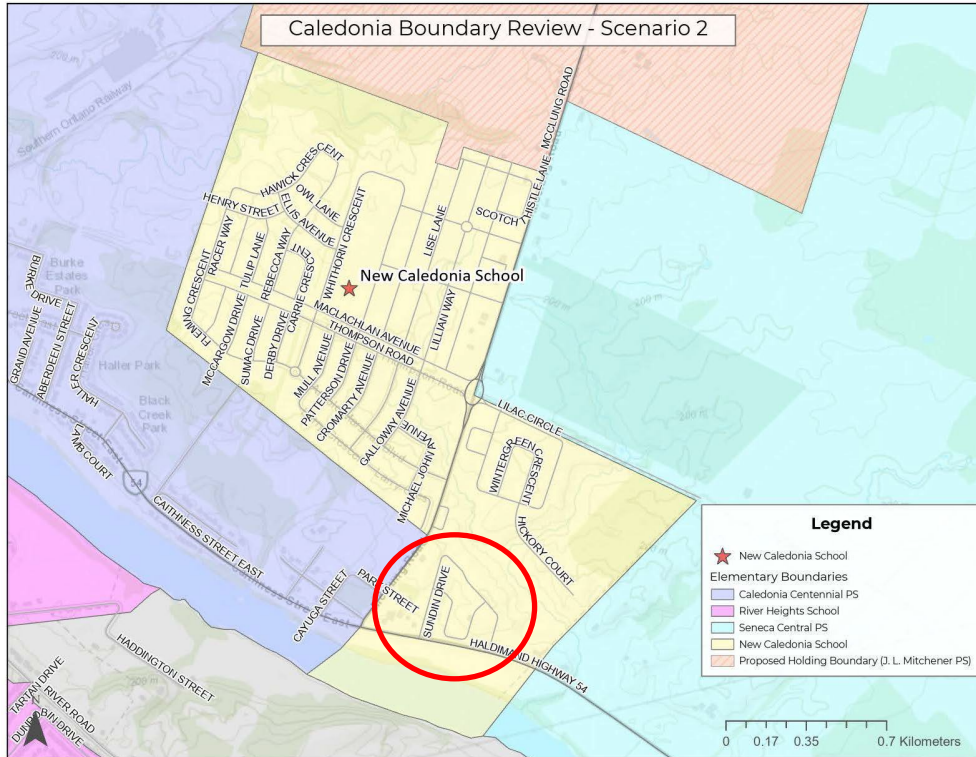
- Proposed attendance area for Scenario 2





# Boundary Review Public Meeting #1: Accommodation Options

- Proposed attendance area for Scenario 2

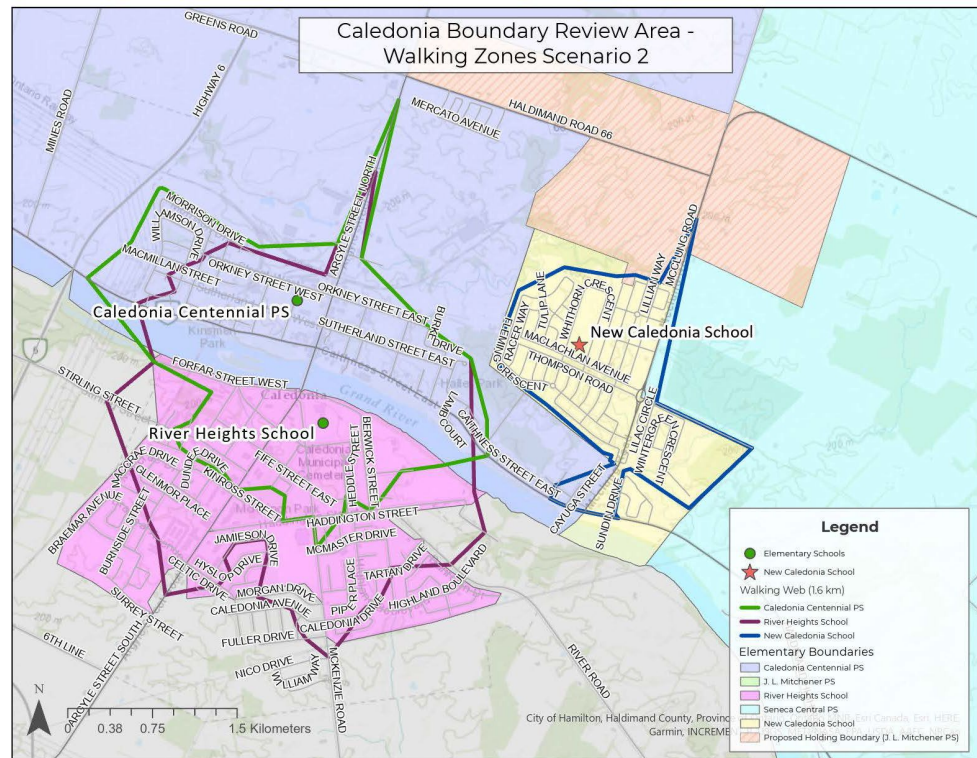




# Boundary Review Public Meeting #1:

## Accommodation Options

- Transportation eligibility for Scenario 2





# Boundary Review Public Meeting #1: Accommodation Option 1

## ■ Enrolment and Capacity Utilization

School	Capacity	Portables	Enrolment																
			2022	2023	2024	2025	2026	2027	2028	2029	2030	2031	2032	2033	2034	2035	2036	2037	2038
Caledonia Centennial PS	366	7	558	601	426	192	226	285	339	376	382	401	420	434	461	466	456	461	466
J. L. Mitchener PS	420	2	346	371	449	380	377	382	409	499	553	617	684	740	915	937	879	915	937
River Heights School	668	2	623	599	700	708	716	715	711	727	732	743	758	771	772	772	772	772	772
Seneca Central PS	164	3	180	203	230	191	184	181	170	158	148	139	124	121	120	120	120	120	120
New School	441	0	0	0	0	393	404	414	434	451	471	465	461	465	468	470	470	470	470
<b>Total</b>	<b>2059</b>	<b>14</b>	<b>1707</b>	<b>1774</b>	<b>1805</b>	<b>1864</b>	<b>1907</b>	<b>1977</b>	<b>2063</b>	<b>2211</b>	<b>2286</b>	<b>2365</b>	<b>2447</b>	<b>2527</b>	<b>2733</b>	<b>2763</b>	<b>2697</b>	<b>2738</b>	<b>2765</b>

School	Capacity	Portables	Capacity Utilization																
			2022	2023	2024	2025	2026	2027	2028	2029	2030	2031	2032	2033	2034	2035	2036	2037	2038
Caledonia Centennial PS	366	7	152%	164%	116%	52%	62%	78%	93%	103%	104%	110%	115%	119%	126%	127%	125%	126%	127%
J. L. Mitchener PS	420	2	82%	88%	107%	90%	90%	91%	97%	119%	132%	147%	163%	176%	218%	223%	209%	218%	223%
River Heights School	668	2	93%	90%	105%	106%	107%	107%	106%	109%	110%	111%	113%	115%	116%	116%	116%	116%	116%
Seneca Central PS	164	3	110%	124%	140%	116%	112%	110%	104%	96%	90%	85%	76%	74%	73%	73%	73%	73%	73%
New School	441	0	0%	0%	0%	89%	92%	94%	98%	102%	107%	105%	105%	105%	105%	106%	107%	107%	107%
<b>Total</b>	<b>2059</b>	<b>14</b>	<b>106%</b>	<b>110%</b>	<b>112%</b>	<b>91%</b>	<b>93%</b>	<b>96%</b>	<b>100%</b>	<b>107%</b>	<b>111%</b>	<b>115%</b>	<b>119%</b>	<b>123%</b>	<b>133%</b>	<b>134%</b>	<b>131%</b>	<b>133%</b>	<b>134%</b>

\*Legacy student provisions may impact the enrolment forecasts





# Boundary Review Public Meeting #1: Accommodation Option 1

## ■ Enrolment and Capacity Utilization

School	Capacity	Portables	Enrolment								
			2022	2023	2024	2025	2026	2027	2028	2029	2030
Caledonia Centennial PS	366	7	558	601	426	192	226	285	339	376	382
J. L. Mitchener PS	420	2	346	371	449	380	377	382	409	499	553
River Heights School	668	2	623	599	700	708	716	715	711	727	732
Seneca Central PS	164	3	180	203	230	191	184	181	170	158	148
New School	441	0	0	0	0	393	404	414	434	451	471
<b>Total</b>	<b>2059</b>	<b>14</b>	<b>1707</b>	<b>1774</b>	<b>1805</b>	<b>1864</b>	<b>1907</b>	<b>1977</b>	<b>2063</b>	<b>2211</b>	<b>2286</b>

School	Capacity	Portables	Capacity Utilization								
			2022	2023	2024	2025	2026	2027	2028	2029	2030
Caledonia Centennial PS	366	7	152%	164%	116%	52%	62%	78%	93%	103%	104%
J. L. Mitchener PS	420	2	82%	88%	107%	90%	90%	91%	97%	119%	132%
River Heights School	668	2	93%	90%	105%	106%	107%	107%	106%	109%	110%
Seneca Central PS	164	3	110%	124%	140%	116%	112%	110%	104%	96%	90%
New School	441	0	0%	0%	0%	89%	92%	94%	98%	102%	107%
<b>Total</b>	<b>2059</b>	<b>14</b>	<b>106%</b>	<b>110%</b>	<b>112%</b>	<b>91%</b>	<b>93%</b>	<b>96%</b>	<b>100%</b>	<b>107%</b>	<b>111%</b>

\*Legacy student provisions may impact the enrolment forecasts



# Boundary Review Public Meeting #1: Accommodation Option 1A – Legacy Provision

- The new school opens JK-8. Students entering Grade 8 have option to remain at their current school.
- Legacy student provisions impact the enrolment forecast for the opening school year 2025.

School	Capacity	Portables	Enrolment								
			2022	2023	2024	2025	2026	2027	2028	2029	2030
Caledonia Centennial PS	366	7	558	601	426	225	226	285	339	376	382
J. L. Mitchener PS	420	2	346	371	449	383	377	382	409	499	553
River Heights School	668	2	623	599	700	708	716	715	711	727	732
Seneca Central PS	164	3	180	203	230	196	184	181	170	158	148
New School	441	0	0	0	0	352	404	414	434	451	471
<b>Total</b>	<b>2059</b>	<b>14</b>	<b>1707</b>	<b>1774</b>	<b>1805</b>	<b>1864</b>	<b>1907</b>	<b>1977</b>	<b>2063</b>	<b>2211</b>	<b>2286</b>

School	Capacity	Portables	Capacity Utilization								
			2022	2023	2024	2025	2026	2027	2028	2029	2030
Caledonia Centennial PS	366	7	152%	164%	116%	61%	62%	78%	93%	103%	104%
J. L. Mitchener PS	420	2	82%	88%	107%	91%	90%	91%	97%	119%	132%
River Heights School	668	2	93%	90%	105%	106%	107%	107%	106%	109%	110%
Seneca Central PS	164	3	110%	124%	140%	120%	112%	110%	104%	96%	90%
New School	441	0	0%	0%	0%	80%	92%	94%	98%	102%	107%
<b>Total</b>	<b>2059</b>	<b>14</b>	<b>106%</b>	<b>110%</b>	<b>112%</b>	<b>91%</b>	<b>93%</b>	<b>96%</b>	<b>100%</b>	<b>107%</b>	<b>111%</b>



# Boundary Review Public Meeting #1: Accommodation Option 2

## ■ Enrolment and Capacity Utilization

School	Capacity	Portables	Enrolment																
			2022	2023	2024	2025	2026	2027	2028	2029	2030	2031	2032	2033	2034	2035	2036	2037	2038
Caledonia Centennial PS	366	7	558	601	426	192	226	285	339	376	382	401	420	434	461	466	456	461	466
J. L. Mitchener PS	420	2	346	371	449	380	377	382	409	499	553	617	684	740	915	937	879	915	937
River Heights School	668	2	623	599	700	708	716	715	711	727	732	743	758	771	772	772	772	772	772
Seneca Central PS	164	3	180	203	230	166	159	156	148	138	130	121	112	111	110	110	110	110	110
New School	441	0	0	0	0	418	429	439	456	471	489	483	473	471	475	478	480	480	480
<b>Total</b>	<b>2059</b>	<b>14</b>	<b>1707</b>	<b>1774</b>	<b>1805</b>	<b>1864</b>	<b>1907</b>	<b>1977</b>	<b>2063</b>	<b>2211</b>	<b>2286</b>	<b>2365</b>	<b>2447</b>	<b>2527</b>	<b>2733</b>	<b>2763</b>	<b>2697</b>	<b>2738</b>	<b>2765</b>

School	Capacity	Portables	Capacity Utilization																
			2022	2023	2024	2025	2026	2027	2028	2029	2030	2031	2032	2033	2034	2035	2036	2037	2038
Caledonia Centennial PS	366	7	152%	164%	116%	52%	62%	78%	93%	103%	104%	110%	115%	119%	126%	127%	125%	126%	127%
J. L. Mitchener PS	420	2	82%	88%	107%	90%	90%	91%	97%	119%	132%	147%	163%	176%	218%	223%	209%	218%	223%
River Heights School	668	2	93%	90%	105%	106%	107%	107%	106%	109%	110%	111%	113%	115%	116%	116%	116%	116%	116%
Seneca Central PS	164	3	110%	124%	140%	101%	97%	95%	90%	84%	79%	74%	68%	68%	67%	67%	67%	67%	67%
New School	441	0	0%	0%	0%	95%	97%	100%	103%	107%	111%	110%	107%	107%	108%	108%	109%	109%	109%
<b>Total</b>	<b>2059</b>	<b>14</b>	<b>106%</b>	<b>110%</b>	<b>112%</b>	<b>91%</b>	<b>93%</b>	<b>96%</b>	<b>100%</b>	<b>107%</b>	<b>111%</b>	<b>115%</b>	<b>119%</b>	<b>123%</b>	<b>133%</b>	<b>134%</b>	<b>131%</b>	<b>133%</b>	<b>134%</b>

\*Legacy student provisions may impact the enrolment forecasts



# Boundary Review Public Meeting #1: Accommodation Option 2

## ■ Enrolment and Capacity Utilization

School	Capacity	Portables	Enrolment								
			2022	2023	2024	2025	2026	2027	2028	2029	2030
Caledonia Centennial PS	366	7	558	601	426	192	226	285	339	376	382
J. L. Mitchener PS	420	2	346	371	449	380	377	382	409	499	553
River Heights School	668	2	623	599	700	708	716	715	711	727	732
Seneca Central PS	164	3	180	203	230	166	159	156	148	138	130
New School	441	0	0	0	0	418	429	439	456	471	489
<b>Total</b>	<b>2059</b>	<b>14</b>	<b>1707</b>	<b>1774</b>	<b>1805</b>	<b>1864</b>	<b>1907</b>	<b>1977</b>	<b>2063</b>	<b>2211</b>	<b>2286</b>

School	Capacity	Portables	Capacity Utilization								
			2022	2023	2024	2025	2026	2027	2028	2029	2030
Caledonia Centennial PS	366	7	152%	164%	116%	52%	62%	78%	93%	103%	104%
J. L. Mitchener PS	420	2	82%	88%	107%	90%	90%	91%	97%	119%	132%
River Heights School	668	2	93%	90%	105%	106%	107%	107%	106%	109%	110%
Seneca Central PS	164	3	110%	124%	140%	101%	97%	95%	90%	84%	79%
New School	441	0	0%	0%	0%	95%	97%	100%	103%	107%	111%
<b>Total</b>	<b>2059</b>	<b>14</b>	<b>106%</b>	<b>110%</b>	<b>112%</b>	<b>91%</b>	<b>93%</b>	<b>96%</b>	<b>100%</b>	<b>107%</b>	<b>111%</b>

\*Legacy student provisions may impact the enrolment forecasts



# Boundary Review Public Meeting #1: Accommodation Option 2A – Legacy Provision

- The new school opens JK-8. Students entering Grade 8 have option to remain at their current school.
- Legacy student provisions impact the enrolment forecast for the opening school year 2025.

School	Capacity	Portables	Enrolment								
			2022	2023	2024	2025	2026	2027	2028	2029	2030
Caledonia Centennial PS	366	7	558	601	426	225	226	285	339	376	382
J. L. Mitchener PS	420	2	346	371	449	383	377	382	409	499	553
River Heights School	668	2	623	599	700	709	716	715	711	727	732
Seneca Central PS	164	3	180	203	230	171	159	156	148	138	130
New School	441	0	0	0	0	376	429	439	456	471	489
<b>Total</b>	<b>2059</b>	<b>14</b>	<b>1707</b>	<b>1774</b>	<b>1805</b>	<b>1864</b>	<b>1907</b>	<b>1977</b>	<b>2063</b>	<b>2211</b>	<b>2286</b>

School	Capacity	Portables	Capacity Utilization								
			2022	2023	2024	2025	2026	2027	2028	2029	2030
Caledonia Centennial PS	366	7	152%	164%	116%	61%	62%	78%	93%	103%	104%
J. L. Mitchener PS	420	2	82%	88%	107%	91%	90%	91%	97%	119%	132%
River Heights School	668	2	93%	90%	105%	106%	107%	107%	106%	109%	110%
Seneca Central PS	164	3	110%	124%	140%	104%	97%	95%	90%	84%	79%
New School	441	0	0%	0%	0%	85%	97%	100%	103%	107%	111%
<b>Total</b>	<b>2059</b>	<b>14</b>	<b>106%</b>	<b>110%</b>	<b>112%</b>	<b>91%</b>	<b>93%</b>	<b>96%</b>	<b>100%</b>	<b>107%</b>	<b>111%</b>



# Boundary Review Public Meeting #1: Public Discussion

- Questions, comments & concerns



# Boundary Review Public Meeting #1: Future Meeting Dates: Agenda

- November 27, 2024 - BRWC Meeting #3
  - Review feedback from Public Meeting #1
  - Discuss accommodation option implementation elements (legacy student options, etc.)
- January 2025 – Draft Caledonia Boundary Review Report to EC
- February 10, 2025 – Caledonia Boundary Review Report to Finance Committee
- February 24, 2025 – Regular Meeting of the Board



**Please submit comments and questions to**  
**[planning@granderie.ca](mailto:planning@granderie.ca)**

**Thank you!**



