

# Elementary School Boundary Review

South West Brantford

May 23, 2017



*SUCCESS* for Every Student

# Agenda

- Welcome and Introductions
- **The Boundary Review Process**
- Grand Erie's Demographics and Long Term Accommodation Forecasts for the South West Brantford area
- **Current and proposed catchment area boundaries for Walter Gretzky and Ryerson Heights**
- Questions/Discussion



*SUCCESS* for Every Student

# Elementary School Boundary Review

Grand Erie's Administrative Procedure FT119 – Boundary Reviews guides our process.

- A review of the elementary school catchment areas for South West Brantford has been initiated by the Board of Trustees after consideration of long term accommodation forecasts and recommendations from the Board's Quality Accommodations Committee
- This public meeting is being held to share enrolment and pupil accommodation forecasts for this area and to share proposed boundary changes to address enrolment pressures



*SUCCESS* for Every Student

# Elementary School Boundary Review

- A working group as set out in FT119 will review information about the proposed boundary changes and feedback received from the school community and report back to Executive Council with a recommendation to the Board for boundary considerations.
- A report based on this feedback will be prepared by Senior Administration with a final recommendation for consideration by the Board of Trustees at the June 2017 Committee and Regular Board Meetings
- The final decision of the Board will be communicated to the school communities through the Board's Website and the school newsletters.



*SUCCESS* for Every Student

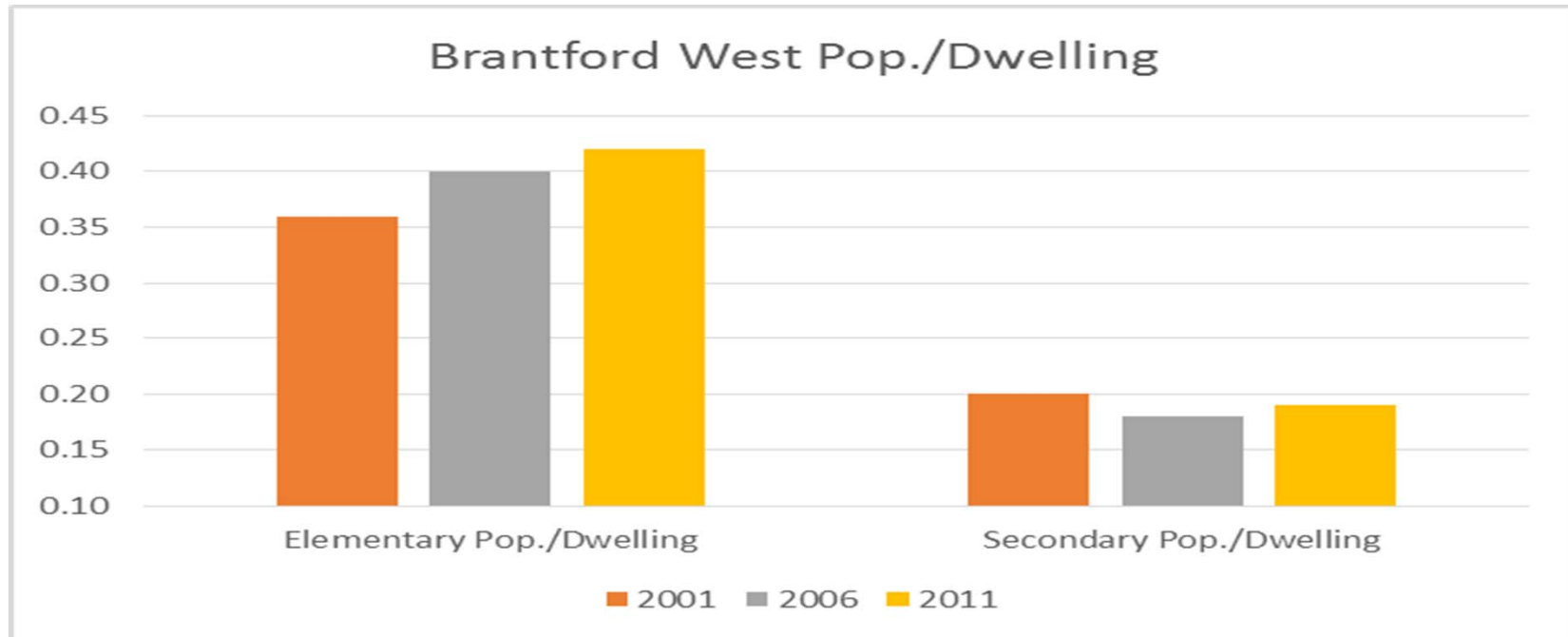
# Demographics & Long Term Accommodation Forecasts for South West Brantford Elementary

	Capacity	Actual Enrolment				
		2012-13	2013-14	2014-15	2015-16	2016-17
Ryerson Heights	593	542	572	581	589	587
Walter Gretzky	498	331	373	430	544	626



*SUCCESS* for Every Student

# Demographics & Long Term Accommodation Forecasts for South West Brantford Elementary



Based on these student yields from new residential dwellings, we expect to see 625 additional elementary students from the remaining development phases to be completed in south west Brantford



*SUCCESS* for Every Student

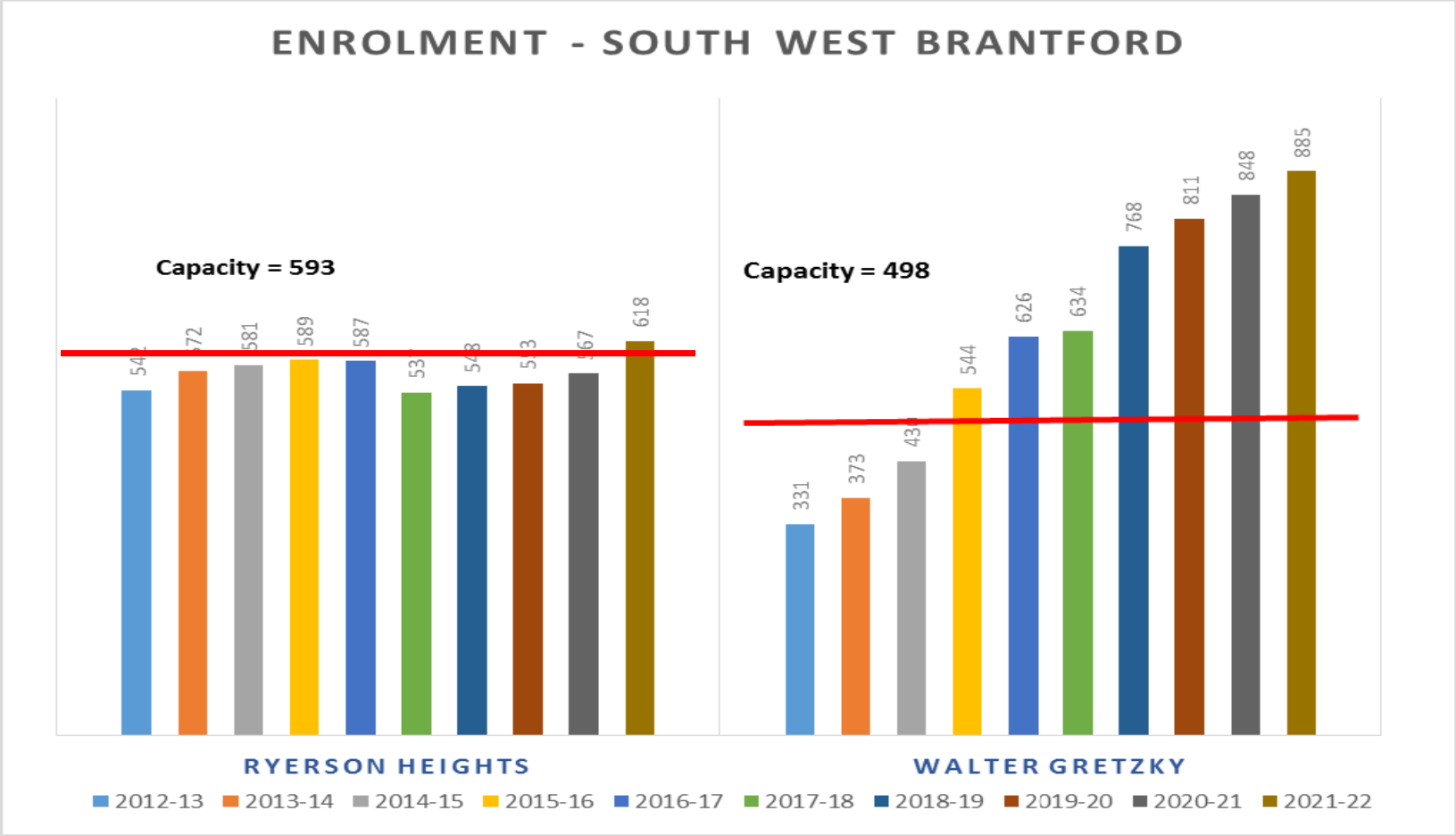
# Demographics & Long Term Accommodation Forecasts for South West Brantford Elementary

	Capacity	Projected Enrolment				
		2017-18	2018-19	2019-20	2020-21	2021-22
Ryerson Heights	593	537	548	553	567	618
Walter Gretzky	498	634	768	811	848	885



*SUCCESS* for Every Student

# Demographics & Long Term Accommodation Forecasts for South West Brantford Elementary



*SUCCESS* for Every Student



# Demographics & Long Term Accommodation Forecasts for South West Brantford Elementary

	Capacity	Capacity Shortfall				
		2017-18	2018-19	2019-20	2020-21	2021-22
Ryerson Heights	593	-	-	-	-	-25
Walter Gretzky	498	-136	-270	-313	-350	-387
<b>Total</b>	<b>1091</b>	<b>-136</b>	<b>-270</b>	<b>-313</b>	<b>-350</b>	<b>-412</b>



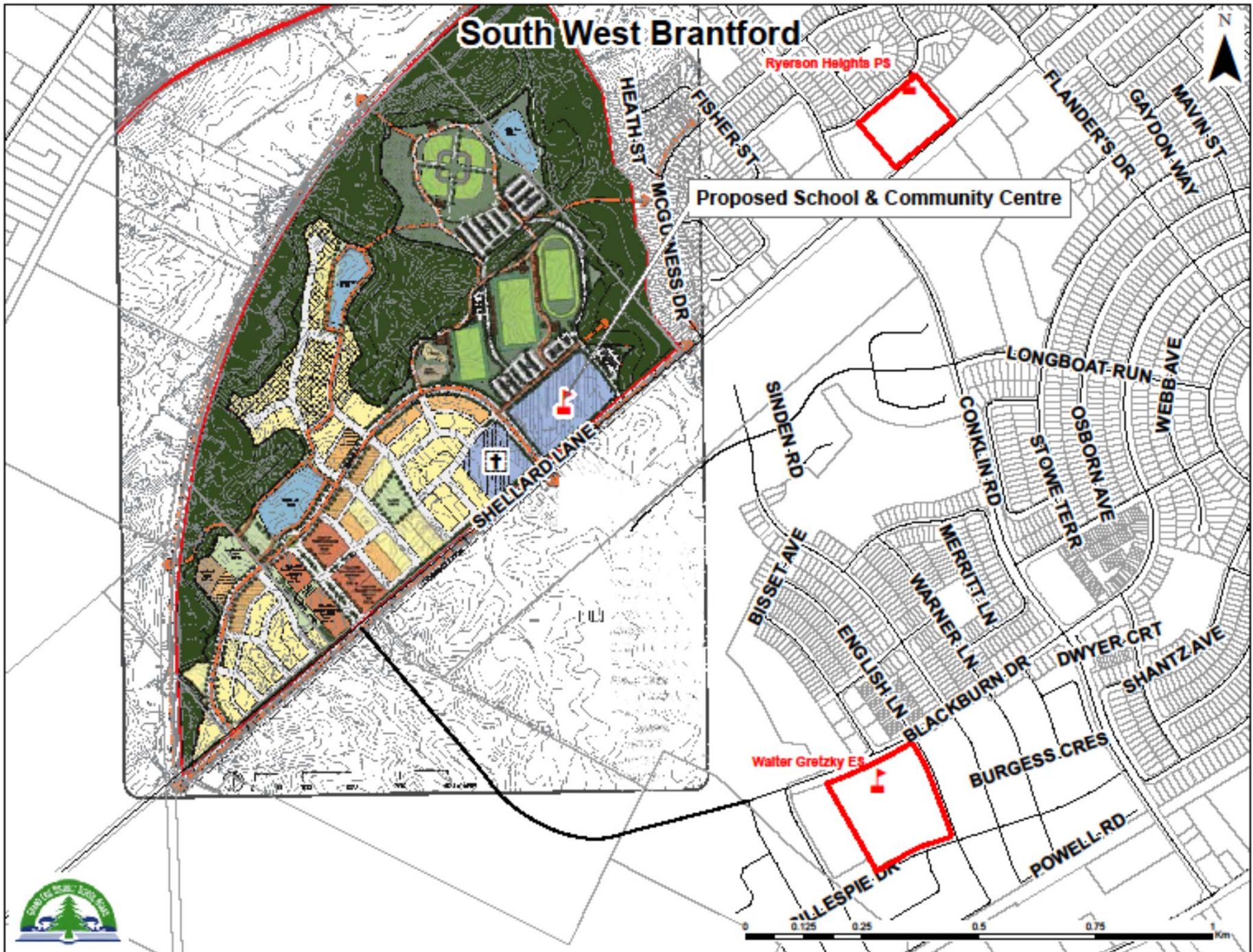
*SUCCESS* for Every Student

# Managing Capacity Shortfall

- Planning for a new school is underway
  - Grand Erie is partnering with the City of Brantford and Brantford Public Library Board as a joint facility
  - Other likely partners including childcare and early years Hub
- The project still needs Ministry of Education capital approval as well as funding approvals for facility partners
- The school could be ready for 2020-21 school year



*SUCCESS* for Every Student



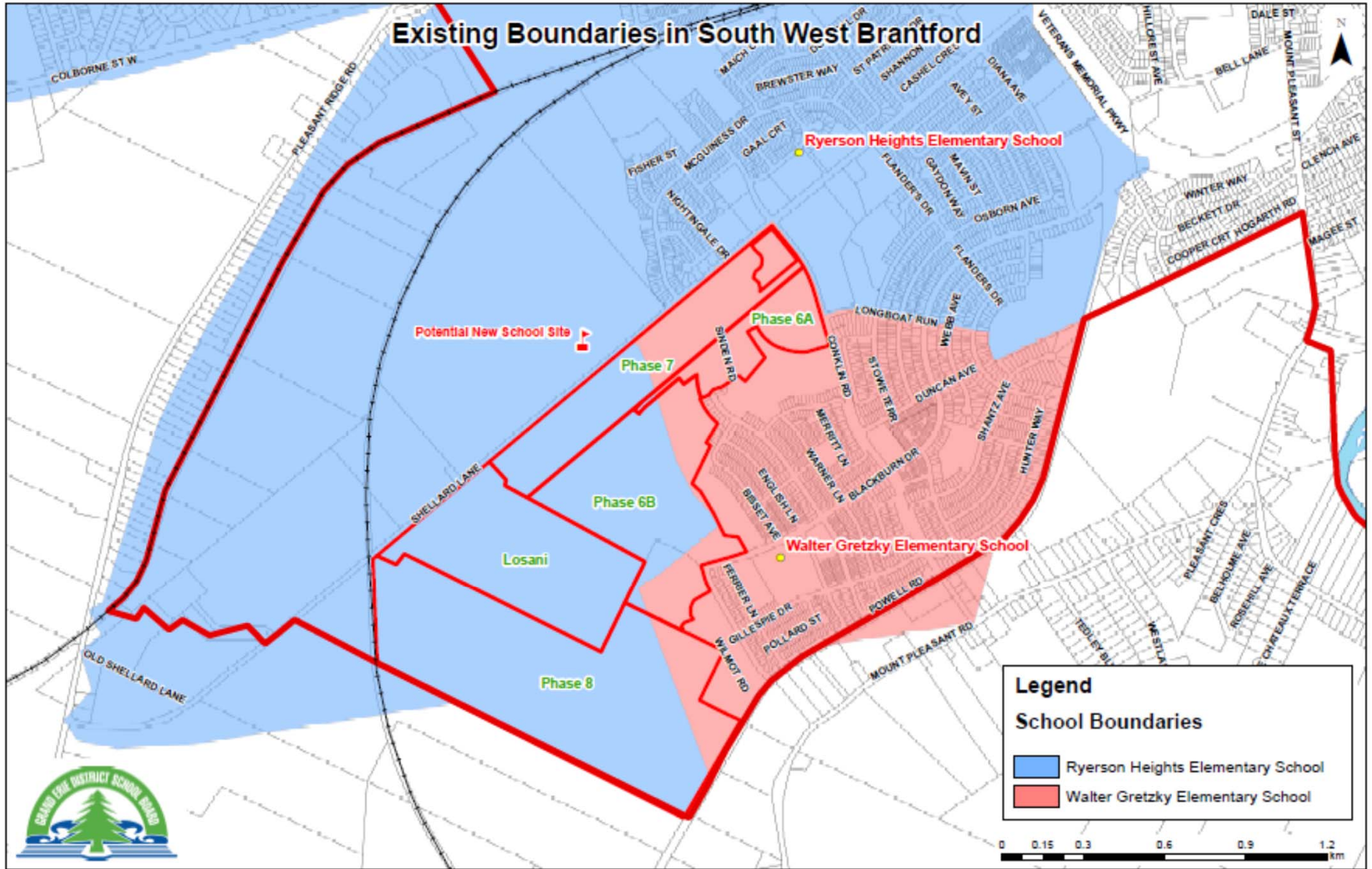
## Managing Capacity Shortfall

- In the short term, we will be accommodating the capacity shortfall by adding portable classrooms to Walter Gretzky and Ryerson Heights. Eight(8) portable classrooms are planned for each school
- Current school catchment boundaries will need to be amended to create a holding school boundary for the new school
- New students from the holding school boundary will be directed to Ryerson Heights until the new school is constructed



*SUCCESS* for Every Student

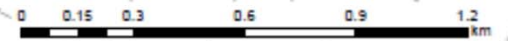
# Existing Boundaries in South West Brantford



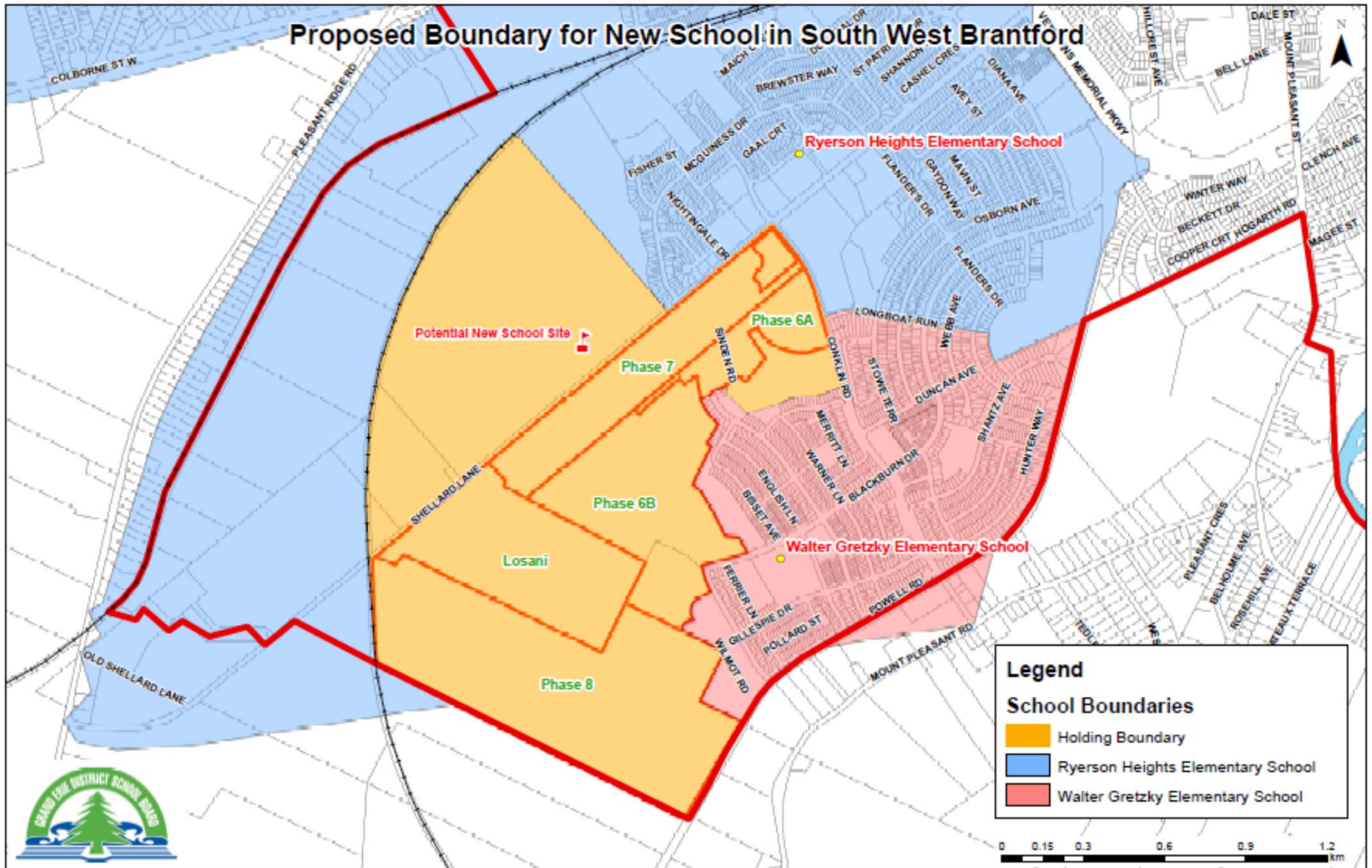
**Legend**

**School Boundaries**

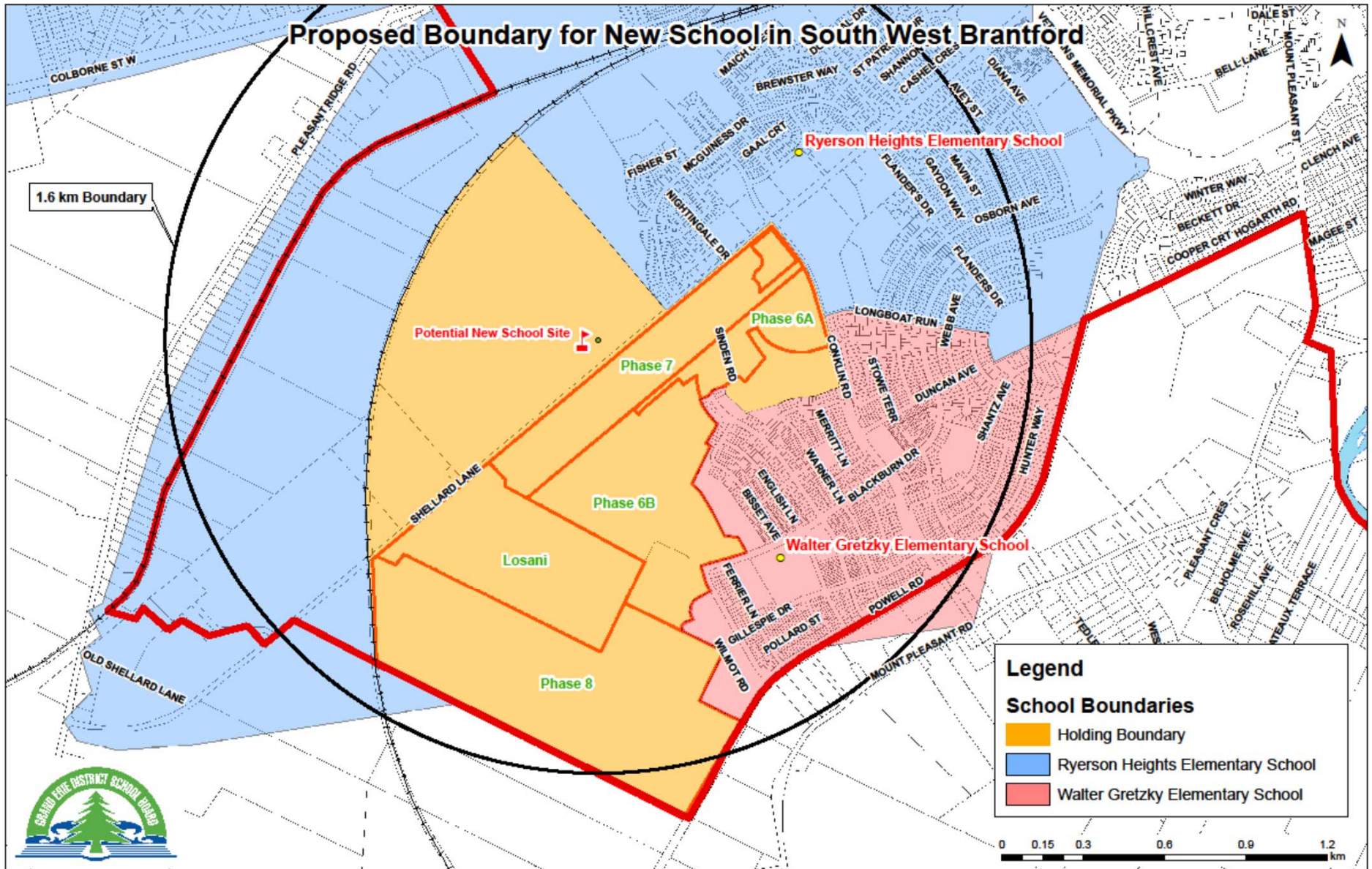
- Ryerson Heights Elementary School
- Walter Gretzky Elementary School



# Proposed Boundary for New School in South West Brantford



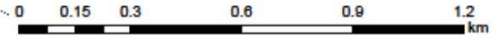
# Proposed Boundary for New School in South West Brantford



**Legend**

**School Boundaries**

- Holding Boundary
- Ryerson Heights Elementary School
- Walter Gretzky Elementary School



## Next Steps & Feedback

- The Board will consider the Boundary Change at its Committee of the Whole Board meeting on June 12, 2017 with final consideration at the June 26<sup>th</sup> Board Meeting.
- Feedback is welcome;
  - By email to [info@granderie.ca](mailto:info@granderie.ca)
  - Through your school council representative
  - Through your school's principal
  - By contacting any Grand Erie Trustee
    - Trustee contact information can be found at [www.granderie.ca](http://www.granderie.ca)
  - By delegation to a Board Meeting



*SUCCESS* for Every Student



Questions or Items for Discussion?



*SUCCESS* for Every Student