



Caledonia Boundary Review
Working Committee Meeting #2
October 16, 2024



Boundary Review Working Committee: **Agenda**

- Welcome/Land Acknowledgement
- Approval of Minutes - BRWC Meeting #1
- Business Arising from Minutes
 - New scenario
 - Scenario legacy options
 - Confirm options to bring to Public Meeting #1





Boundary Review Working Committee: Land Acknowledgement

*Grand Erie District School Board recognizes **Six Nations of the Grand River** and **Mississaugas of the Credit First Nation**, as the longstanding peoples of this territory. We honour, recognize, and respect these communities as well as all First Nations, Metis and Inuit Peoples who reside within the Grand Erie District School Board. We are all stewards of these lands and waters where we now gather, learn and play, and commit to working together in the spirit of Reconciliation.*



Boundary Review Working Committee: Previous Minutes

- For approval:
 - Caledonia Boundary Review BRWC Meeting #1
- Minutes will be posted to the website after approval by the BRWC



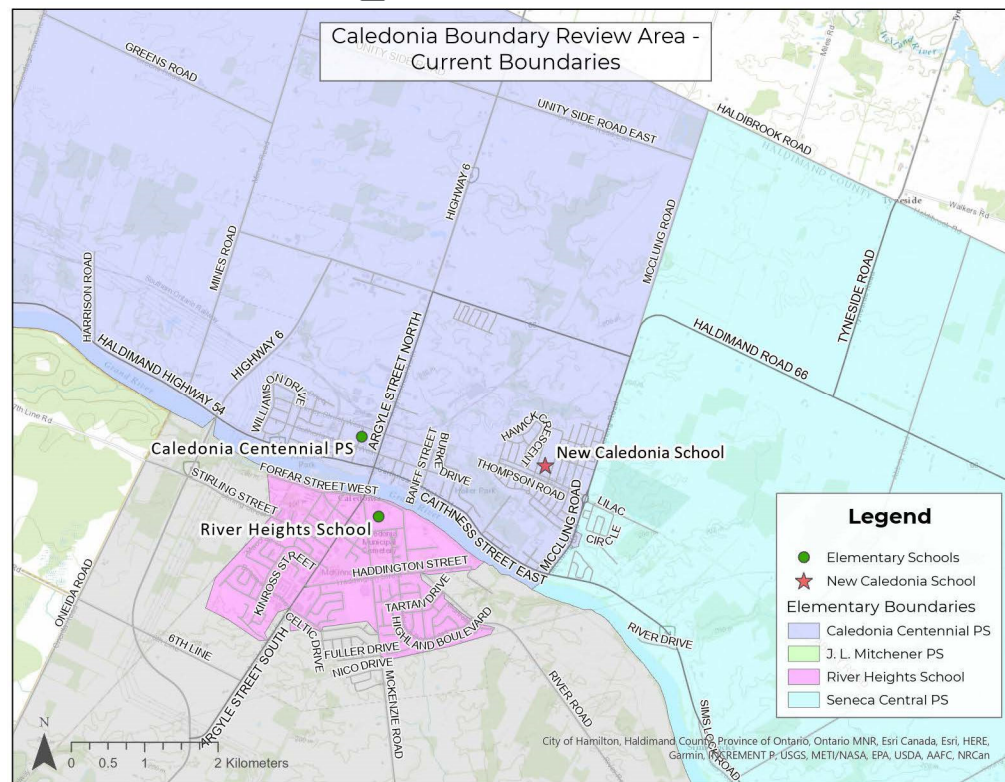
Boundary Review Working Committee: Information Review

- New joint-use school between Grand Erie and Brant Haldimand Norfolk Catholic DSB will be opening in September 2025.
- Boundary Review process will establish an attendance area boundary for the New Caledonia Elementary School.
- GEDSB new school capacity: 441 students.
- New students within CCPS boundary area are directed to J. L. Mitchener until the new school is constructed.
- Effective September 2024, French Immersion program for grades JK-3 will transfer from CCPS to River Heights School.



Boundary Review Working Committee: **New Caledonia School Boundary Area Discussion**

Boundary Review Working Committee: Information Review



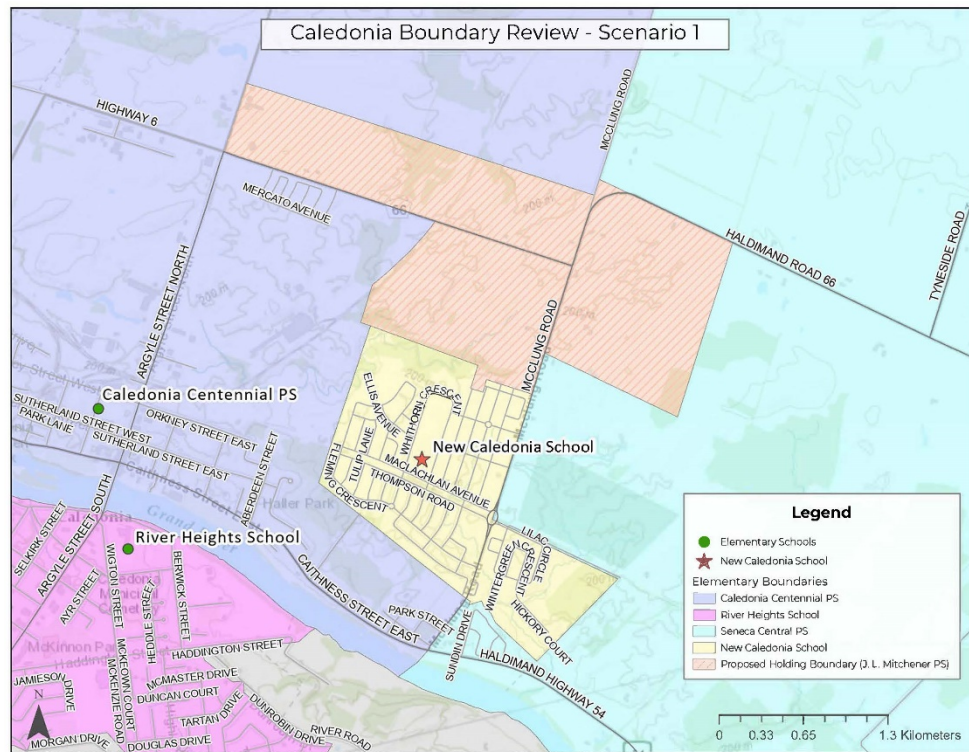


Boundary Review Working Committee: Accommodation Options

1. New school boundary only includes the walking zone
2. New school boundary includes the walking zone and the area east of McClung Rd and Hwy 54 (Sundin Drive)
 - Transportation required

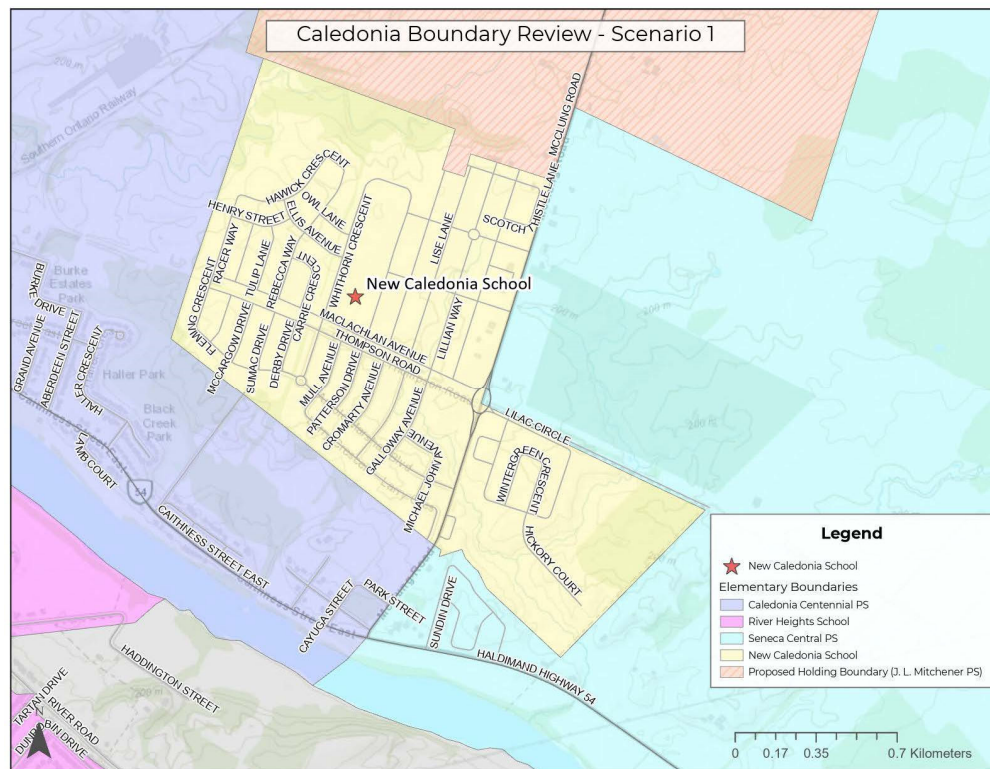
Boundary Review Working Committee: Accommodation Options

- Proposed attendance area for Scenario 1



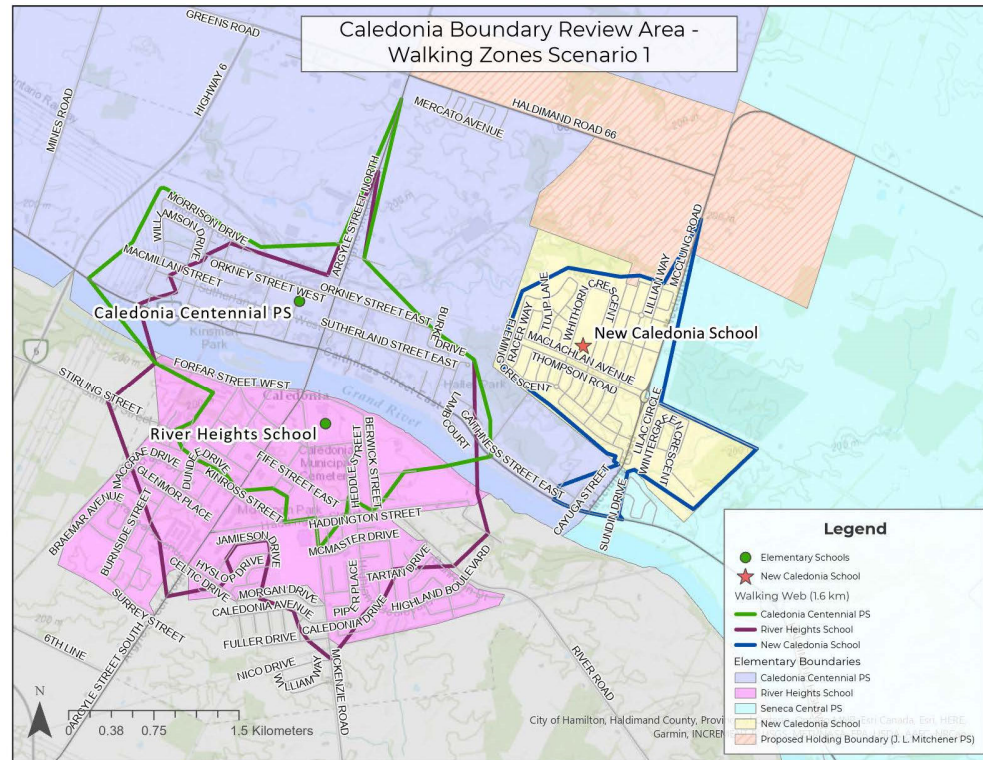
Boundary Review Working Committee: Accommodation Options

- Proposed attendance area for Scenario 1



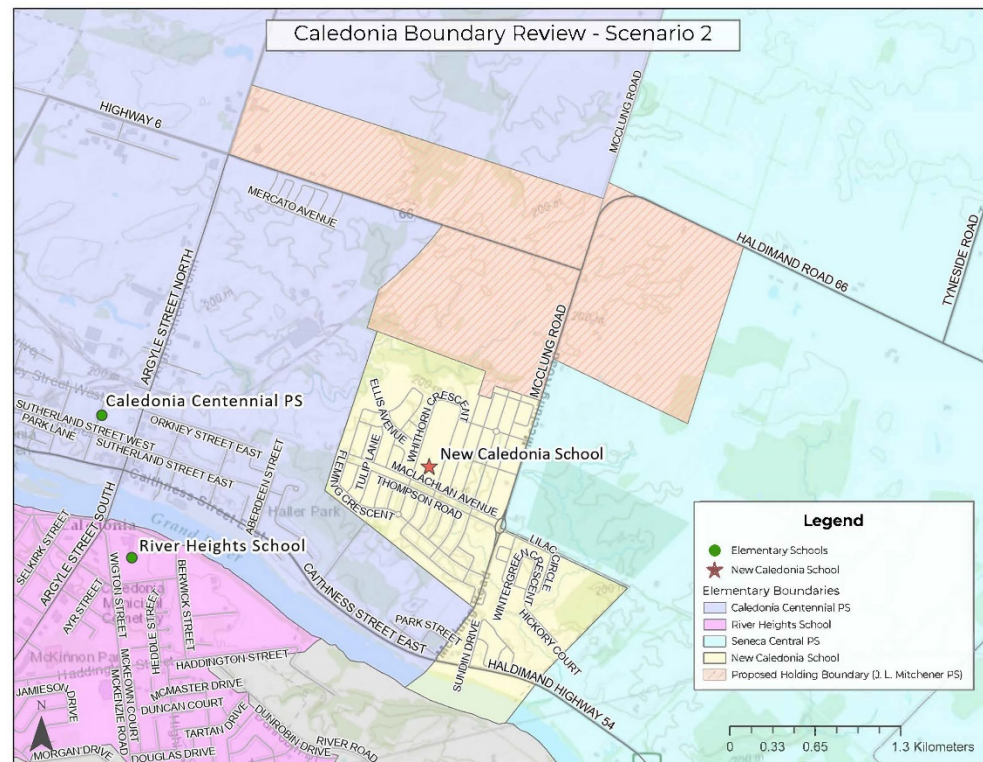
Boundary Review Working Committee: Accommodation Options

- Transportation eligibility for Scenario 1



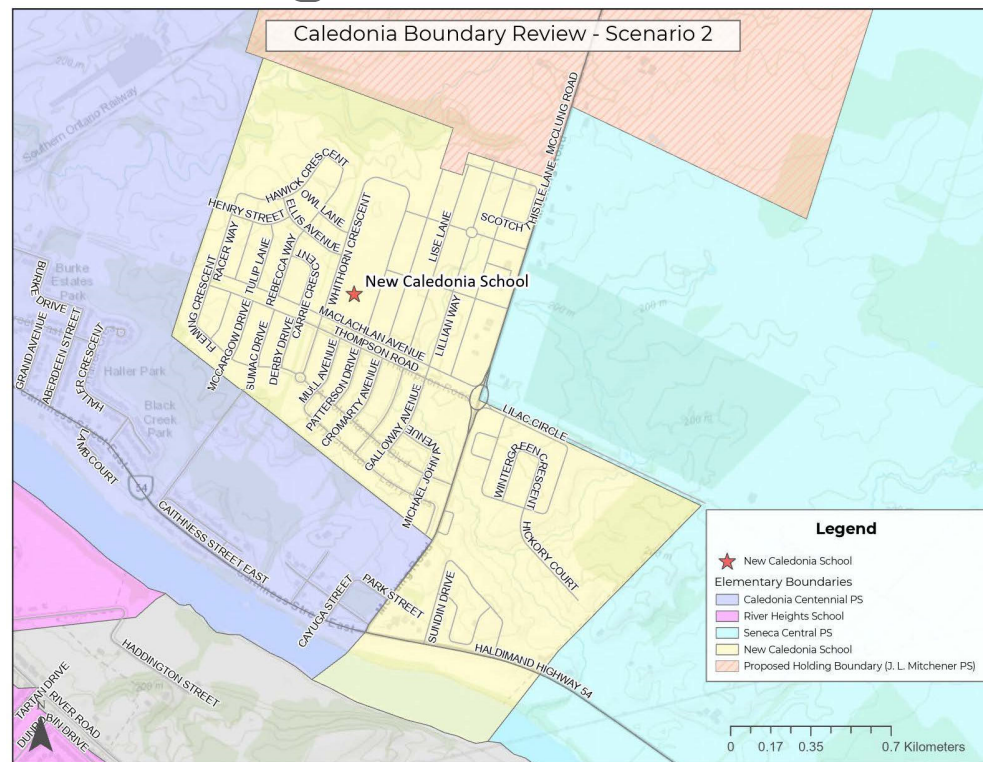
Boundary Review Working Committee: Accommodation Options

- Proposed attendance area for Scenario 2



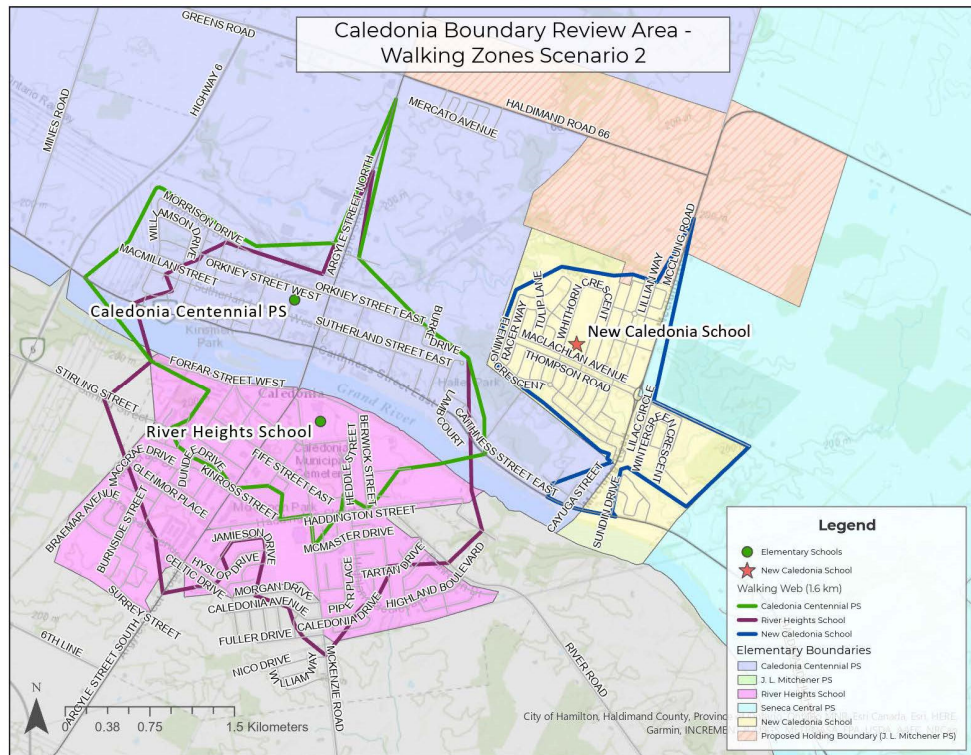
Boundary Review Working Committee: Accommodation Options

- Proposed attendance area for Scenario 2



Boundary Review Working Committee: Accommodation Options

- Transportation eligibility for Scenario 2





Boundary Review Working Committee: Accommodation Option 1

■ Enrolment and Capacity Utilization

Scenario 1			Enrolment																
School	Capacity	Portables	2022	2023	2024	2025	2026	2027	2028	2029	2030	2031	2032	2033	2034	2035	2036	2037	2038
Caledonia Centennial PS	366	7	558	601	426	192	226	285	339	376	382	401	420	434	461	466	456	461	466
J. L. Mitchener PS	420	2	346	371	449	380	377	382	409	499	553	617	684	740	915	937	879	915	937
River Heights School	668	2	623	599	700	708	716	715	711	727	732	743	758	771	772	772	772	772	772
Seneca Central PS	164	3	180	203	230	191	184	181	170	158	148	139	124	121	120	120	120	120	120
New Caledonia School	441	0	0	0	0	393	404	414	434	451	471	465	461	461	465	468	470	470	470
Total	2059	14	1707	1774	1805	1864	1907	1977	2063	2211	2286	2365	2447	2527	2733	2763	2697	2738	2765

Scenario 1			Capacity Utilization																
School	Capacity	Portables	2022	2023	2024	2025	2026	2027	2028	2029	2030	2031	2032	2033	2034	2035	2036	2037	2038
Caledonia Centennial PS	366	7	152%	164%	116%	52%	62%	78%	93%	103%	104%	110%	115%	119%	126%	127%	125%	126%	127%
J. L. Mitchener PS	420	2	82%	88%	107%	90%	90%	91%	97%	119%	132%	147%	163%	176%	218%	223%	209%	218%	223%
River Heights School	668	2	93%	90%	105%	106%	107%	107%	106%	109%	110%	111%	113%	115%	116%	116%	116%	116%	116%
Seneca Central PS	164	3	110%	124%	140%	116%	112%	110%	104%	96%	90%	85%	76%	74%	73%	73%	73%	73%	73%
New Caledonia School	441	0	0%	0%	0%	89%	92%	94%	98%	102%	107%	105%	105%	105%	105%	106%	107%	107%	107%
Total	2059	14	83%	86%	88%	91%	93%	96%	100%	107%	111%	115%	119%	123%	133%	134%	131%	133%	134%

*Legacy student provisions may impact the enrolment forecasts



Boundary Review Working Committee: Accommodation Option 1A

- New Caledonia School opens with Grades JK-7. Grade 8's remain at their current school.
- Legacy student provisions impact the enrolment forecast for the opening school year 2025.

School	Capacity	Portables	Enrolment																
			2022	2023	2024	2025	2026	2027	2028	2029	2030	2031	2032	2033	2034	2035	2036	2037	2038
Caledonia Centennial PS	366	7	558	601	426	225	226	285	339	376	382	401	420	434	461	466	456	461	466
J. L. Mitchener PS	420	2	346	371	449	383	377	382	409	499	553	617	684	740	915	937	879	915	937
River Heights School	668	2	623	599	700	708	716	715	711	727	732	743	758	771	772	772	772	772	772
Seneca Central PS	164	3	180	203	230	196	184	181	170	158	148	139	124	121	120	120	120	120	120
New Caledonia School	441	0	0	0	0	352	404	414	434	451	471	465	461	461	465	468	470	470	470
Total	2059	14	1707	1774	1805	1864	1907	1977	2063	2211	2286	2365	2447	2527	2733	2763	2697	2738	2765

School	Capacity	Portables	Capacity Utilization																
			2022	2023	2024	2025	2026	2027	2028	2029	2030	2031	2032	2033	2034	2035	2036	2037	2038
Caledonia Centennial PS	366	7	152%	164%	116%	61%	62%	78%	93%	103%	104%	110%	115%	119%	126%	127%	125%	126%	127%
J. L. Mitchener PS	420	2	82%	88%	107%	91%	90%	91%	97%	119%	132%	147%	163%	176%	218%	223%	209%	218%	223%
River Heights School	668	2	93%	90%	105%	106%	107%	107%	106%	109%	110%	111%	113%	115%	116%	116%	116%	116%	116%
Seneca Central PS	164	3	110%	124%	140%	120%	112%	110%	104%	96%	90%	85%	76%	74%	73%	73%	73%	73%	73%
New Caledonia School	441	0	0%	0%	0%	80%	92%	94%	98%	102%	107%	105%	105%	105%	105%	106%	107%	107%	107%
Total	2059	14	83%	86%	88%	91%	93%	96%	100%	107%	111%	115%	119%	123%	133%	134%	131%	133%	134%



Boundary Review Working Committee: Accommodation Option 1B

- New Caledonia School opens with Grades JK-6. In 2026, the new school includes Grades JK-7.
- Legacy student provisions impact the enrolment forecast for 2025 and 2026.

School	Capacity	Portables	Enrolment																
			2022	2023	2024	2025	2026	2027	2028	2029	2030	2031	2032	2033	2034	2035	2036	2037	2038
Caledonia Centennial PS	366	7	558	601	426	259	260	285	339	376	382	401	420	434	461	466	456	461	466
J. L. Mitchener PS	420	2	346	371	449	384	378	382	409	499	553	617	684	740	915	937	879	915	937
River Heights School	668	2	623	599	700	708	716	715	711	727	732	743	758	771	772	772	772	772	772
Seneca Central PS	164	3	180	203	230	199	187	181	170	158	148	139	124	121	120	120	120	120	120
New Caledonia School	441	0	0	0	0	314	365	414	434	451	471	465	461	461	465	468	470	470	470
Total	2059	14	1707	1774	1805	1864	1906	1977	2063	2211	2286	2365	2447	2527	2733	2763	2697	2738	2765

School	Capacity	Portables	Capacity Utilization																
			2022	2023	2024	2025	2026	2027	2028	2029	2030	2031	2032	2033	2034	2035	2036	2037	2038
Caledonia Centennial PS	366	7	152%	164%	116%	71%	71%	78%	93%	103%	104%	110%	115%	119%	126%	127%	125%	126%	127%
J. L. Mitchener PS	420	2	82%	88%	107%	91%	90%	91%	97%	119%	132%	147%	163%	176%	218%	223%	209%	218%	223%
River Heights School	668	2	93%	90%	105%	106%	107%	107%	106%	109%	110%	111%	113%	115%	116%	116%	116%	116%	116%
Seneca Central PS	164	3	110%	124%	140%	121%	114%	110%	104%	96%	90%	85%	76%	74%	73%	73%	73%	73%	73%
New Caledonia School	441	0	0%	0%	0%	71%	83%	94%	98%	102%	107%	105%	105%	105%	105%	106%	107%	107%	107%
Total	2059	14	83%	86%	88%	91%	93%	96%	100%	107%	111%	115%	119%	123%	133%	134%	131%	133%	134%



Boundary Review Working Committee: Accommodation Option 2

■ Enrolment and Capacity Utilization

Scenario 2			Enrolment																
School	Capacity	Portables	2022	2023	2024	2025	2026	2027	2028	2029	2030	2031	2032	2033	2034	2035	2036	2037	2038
Caledonia Centennial PS	366	7	558	601	426	192	226	285	339	376	382	401	420	434	461	466	456	461	466
J. L. Mitchener PS	420	2	346	371	449	380	377	382	409	499	553	617	684	740	915	937	879	915	937
River Heights School	668	2	623	599	700	708	716	715	711	727	732	743	758	771	772	772	772	772	772
Seneca Central PS	164	3	180	203	230	166	159	156	148	138	130	121	112	111	110	110	110	110	110
New Caledonia School	441	0	0	0	0	418	429	439	456	471	489	483	473	471	475	478	480	480	480
Total	2059	14	1707	1774	1805	1864	1907	1977	2063	2211	2286	2365	2447	2527	2733	2763	2697	2738	2765

Scenario 2			Capacity Utilization																
School	Capacity	Portables	2022	2023	2024	2025	2026	2027	2028	2029	2030	2031	2032	2033	2034	2035	2036	2037	2038
Caledonia Centennial PS	366	7	152%	164%	116%	52%	62%	78%	93%	103%	104%	110%	115%	119%	126%	127%	125%	126%	127%
J. L. Mitchener PS	420	2	82%	88%	107%	90%	90%	91%	97%	119%	132%	147%	163%	176%	218%	223%	209%	218%	223%
River Heights School	668	2	93%	90%	105%	106%	107%	107%	106%	109%	110%	111%	113%	115%	116%	116%	116%	116%	116%
Seneca Central PS	164	3	110%	124%	140%	101%	97%	95%	90%	84%	79%	74%	68%	68%	67%	67%	67%	67%	67%
New Caledonia School	441	0	0%	0%	0%	95%	97%	100%	103%	107%	111%	110%	107%	107%	108%	108%	109%	109%	109%
Total	2059	14	83%	86%	88%	91%	93%	96%	100%	107%	111%	115%	119%	123%	133%	134%	131%	133%	134%

*Legacy student provisions may impact the enrolment forecasts



Boundary Review Working Committee: Accommodation Option 2A

- New Caledonia School opens with Grades JK-7. Grade 8's remain at their current school.
- Legacy student provisions impact the enrolment forecast for the opening school year 2025.

School	Capacity	Portables	Enrolment																
			2022	2023	2024	2025	2026	2027	2028	2029	2030	2031	2032	2033	2034	2035	2036	2037	2038
Caledonia Centennial PS	366	7	558	601	426	225	226	285	339	376	382	401	420	434	461	466	456	461	466
J. L. Mitchener PS	420	2	346	371	449	383	377	382	409	499	553	617	684	740	915	937	879	915	937
River Heights School	668	2	623	599	700	709	716	715	711	727	732	743	758	771	772	772	772	772	772
Seneca Central PS	164	3	180	203	230	171	159	156	148	138	130	121	112	111	110	110	110	110	110
New Caledonia School	441	0	0	0	0	376	429	439	456	471	489	483	473	471	475	478	480	480	480
Total	2059	14	1707	1774	1805	1864	1907	1977	2063	2211	2286	2365	2447	2527	2733	2763	2697	2738	2765

School	Capacity	Portables	Capacity Utilization																
			2022	2023	2024	2025	2026	2027	2028	2029	2030	2031	2032	2033	2034	2035	2036	2037	2038
Caledonia Centennial PS	366	7	152%	164%	116%	61%	62%	78%	93%	103%	104%	110%	115%	119%	126%	127%	125%	126%	127%
J. L. Mitchener PS	420	2	82%	88%	107%	91%	90%	91%	97%	119%	132%	147%	163%	176%	218%	223%	209%	218%	223%
River Heights School	668	2	93%	90%	105%	106%	107%	107%	106%	109%	110%	111%	113%	115%	116%	116%	116%	116%	116%
Seneca Central PS	164	3	110%	124%	140%	104%	97%	95%	90%	84%	79%	74%	68%	68%	67%	67%	67%	67%	67%
New Caledonia School	441	0	0%	0%	0%	85%	97%	100%	103%	107%	111%	110%	107%	107%	108%	108%	109%	109%	109%
Total	2059	14	83%	86%	88%	91%	93%	96%	100%	107%	111%	115%	119%	123%	133%	134%	131%	133%	134%



Boundary Review Working Committee: Accommodation Option 2B

- New Caledonia School opens with Grades JK-6. In 2026, the new school includes Grades JK-7.
- Legacy student provisions impact the enrolment forecast for 2025 and 2026.

School	Capacity	Portables	Enrolment																
			2022	2023	2024	2025	2026	2027	2028	2029	2030	2031	2032	2033	2034	2035	2036	2037	2038
Caledonia Centennial PS	366	7	558	601	426	259	260	285	339	376	382	401	420	434	461	466	456	461	466
J. L. Mitchener PS	420	2	346	371	449	384	378	382	409	499	553	617	684	740	915	937	879	915	937
River Heights School	668	2	623	599	700	709	716	715	711	727	732	743	758	771	772	772	772	772	772
Seneca Central PS	164	3	180	203	230	175	163	156	148	138	130	121	112	111	110	110	110	110	110
New Caledonia School	441	0	0	0	0	337	389	439	456	471	489	483	473	471	475	478	480	480	480
Total	2059	14	1707	1774	1805	1864	1906	1977	2063	2211	2286	2365	2447	2527	2733	2763	2697	2738	2765

School	Capacity	Portables	Capacity Utilization																
			2022	2023	2024	2025	2026	2027	2028	2029	2030	2031	2032	2033	2034	2035	2036	2037	2038
Caledonia Centennial PS	366	7	152%	164%	116%	71%	71%	78%	93%	103%	104%	110%	115%	119%	126%	127%	125%	126%	127%
J. L. Mitchener PS	420	2	82%	88%	107%	91%	90%	91%	97%	119%	132%	147%	163%	176%	218%	223%	209%	218%	223%
River Heights School	668	2	93%	90%	105%	106%	107%	107%	106%	109%	110%	111%	113%	115%	116%	116%	116%	116%	116%
Seneca Central PS	164	3	110%	124%	140%	107%	99%	95%	90%	84%	79%	74%	68%	68%	67%	67%	67%	67%	67%
New Caledonia School	441	0	0%	0%	0%	76%	88%	100%	103%	107%	111%	110%	107%	107%	108%	108%	109%	109%	109%
Total	2059	14	83%	86%	88%	91%	93%	96%	100%	107%	111%	115%	119%	123%	133%	134%	131%	133%	134%



Boundary Review Working Committee: Round Table Discussion





Boundary Review Working Committee: Future Meeting Dates: Agenda

- November 6, 2024 – Public Meeting #1
 - Boundary Review Background
 - Presentation of preferred accommodation option
 - Collect public feedback
- November 27, 2024 - BRWC Meeting #3
 - Review public meeting feedback
 - Discuss accommodation option implementation elements (legacy student options, etc.)



Boundary Review Working Committee: Future Meeting Dates: Agenda

- January 2025 – Draft Caledonia Boundary Review Report to EC
- February 10, 2025 – Caledonia Boundary Review Report to Finance Committee
- February 24, 2025 – Regular Meeting of the Board



**Next Meeting:
Wednesday, November 27, 2024**

Please submit comments and questions to

planning@granderie.ca

Thank you!





Boundary Review Working Committee: Accommodation Option 1A, 1B

- Current student counts
- Option 1A – school opens JK-7
- Option 2B – school opens JK-6

Scenario 1A Legacy Students	
Home School	2025
	Grade 8
Caledonia Centennial PS	33
J. L. Mitchener PS	3
Seneca Central PS	5
River Heights School	0
Total	41

Scenario 1B Legacy Students JK-6				
Home School	2025		2026	
	Grade 7	Grade 8	Grade 7	Grade 8
Caledonia Centennial PS	34	33		34
J. L. Mitchener PS	1	3		1
Seneca Central PS	3	5		3
River Heights School	0	0		0
Total	38	41	0	38



Boundary Review Working Committee: Accommodation Option 2A, 2B

- Current student counts
- Option 2A – school opens JK-7
- Option 2B – school opens JK-6

Scenario 2A Legacy Students	
Home School	2025
	Grade 8
Caledonia Centennial PS	33
J. L. Mitchener PS	3
Seneca Central PS	5
River Heights School	1
Total	42

Scenario 2B Legacy Students				
Home School	2025		2026	
	Grade 7	Grade 8	Grade 7	Grade 8
Caledonia Centennial PS	34	33		34
J. L. Mitchener PS	1	3		1
Seneca Central PS	4	5		4
River Heights School	0	1		0
Total	39	42	0	39

Boundary Review Working Committee: Information Review

- Developments in the proposed holding area

